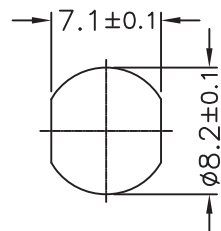


Material:

- Waterproof Rate: IP67
- LED Holder: Brass, Nickel plating
- LED: $\phi 5\text{MM}$, Blue
- Forward Voltage: Blue Typ. 3.5V/Max.4V
- Forward Current: Blue Max. 30mA
- Luminous Intensity: Blue Min.4,150/
Typ.5,800(Mcd)
- Operating Voltage: 4V DC
- Reverse Voltage: 5V DC
- Gasket: EPDM, Black
- Screw Nut: Brass, Nickel plating
- Operating Temperature: $-40^{\circ}\text{C} \sim +80^{\circ}\text{C}$
- For Panel Thickness 6.5MM Max.



Recommended Panel Cut-Out

QC Quality Control: Important Dimension to check
Unit: MM $\pm 0.25\text{MM}$

Ⓜ = Assmann logo



ITEM NO.

A-LED8-1BBAS-MR7-1-R

TITLE

Waterproof LED - Blue color, M8 size connector, $\phi 5\text{MM}$, Metal housing, Solder pins, IP67 unmated

ASSMANN
Electronics, Inc.

1840 W. Drake Drive, Suite 101 • Tempe, AZ 85283
Toll Free: 1-877-277-6266 • Email: info@usa-assmann.com

THIS DRAWING IS UNPUBLISHED
©Copyright 2010 by Assmann Electronic Components
All International Rights Reserved