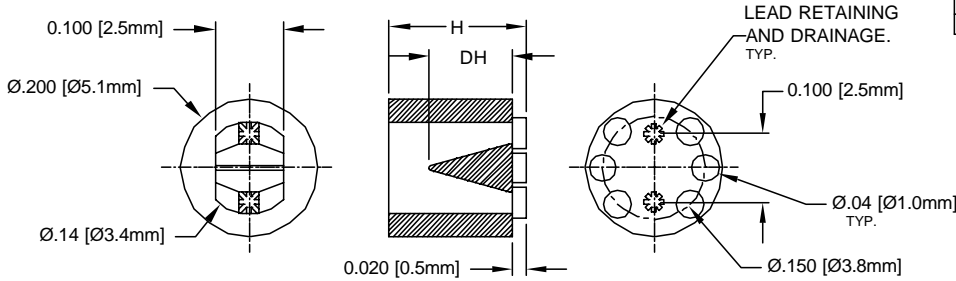


| REV. | DESCRIPTION                              | DATE     | APPROVED |
|------|--|----------|----------|
| D    | Engineering Update w/o Changes           | 02/27/04 | M. C.    |
| E    | Changed LTM Material from 44-BK to 56-BK | 06/27/07 | M. C.    |
|      |  |          |          |
|      |  |          |          |



| PART NO.      | H         | DH            | PART NO.      | H             | DH         | PART NO.      | H          | DH         |
|---------------|-----------|---------------|---------------|---------------|------------|---------------|------------|------------|
| LTM / NTM-120 | .120(3.1) | .060(1.5)     | LTM / NTM-300 | .300(7.6)     | .185(4.7)  | LTM / NTM-490 | .490(12.5) | .310(7.9)  |
| LTM / NTM-130 | .130(3.3) |               | LTM / NTM-310 | .310(7.9)     |            | LTM / NTM-500 | .500(12.7) | .560(14.2) |
| LTM / NTM-140 | .140(3.6) |               | LTM / NTM-320 | .320(8.1)     |            | LTM / NTM-520 | .520(13.2) |            |
| LTM / NTM-150 | .150(3.8) |               | LTM / NTM-330 | .330(8.4)     |            | LTM / NTM-550 | .550(14.0) |            |
| LTM / NTM-160 | .160(4.1) |               | LTM / NTM-340 | .340(8.6)     |            | LTM / NTM-570 | .570(14.5) |            |
| LTM / NTM-170 | .170(4.3) |               | LTM / NTM-350 | .350(8.9)     |            | LTM / NTM-600 | .600(15.2) |            |
| LTM / NTM-180 | .180(4.6) |               | LTM / NTM-360 | .360(9.1)     |            | LTM / NTM-620 | .620(15.8) |            |
| LTM / NTM-190 | .190(4.8) |               | LTM / NTM-370 | .370(9.4)     |            | LTM / NTM-650 | .650(16.5) |            |
| LTM / NTM-200 | .200(5.1) |               | LTM / NTM-380 | .380(9.7)     |            | LTM / NTM-670 | .670(17.0) |            |
| LTM / NTM-210 | .210(5.3) |               | LTM / NTM-390 | .390(9.9)     |            | LTM / NTM-700 | .700(17.8) |            |
| LTM / NTM-220 | .220(5.6) | LTM / NTM-400 | .400(10.2)    | LTM / NTM-720 | .720(18.3) |               |            |            |
| LTM / NTM-230 | .230(5.8) | LTM / NTM-410 | .410(10.4)    | LTM / NTM-750 | .750(19.1) | .690(17.5)    |            |            |
| LTM / NTM-240 | .240(6.1) | LTM / NTM-420 | .420(10.7)    | LTM / NTM-770 | .770(19.6) |               |            |            |
| LTM / NTM-250 | .250(6.4) | LTM / NTM-430 | .430(10.9)    | LTM / NTM-800 | .800(20.3) |               |            |            |
| LTM / NTM-260 | .260(6.6) | LTM / NTM-440 | .440(11.2)    | LTM / NTM-820 | .820(20.8) |               |            |            |
| LTM / NTM-270 | .270(6.9) | LTM / NTM-450 | .450(11.4)    | LTM / NTM-850 | .850(21.6) |               |            |            |
| LTM / NTM-280 | .280(7.1) | LTM / NTM-460 | .460(11.7)    | LTM / NTM-870 | .870(22.1) |               |            |            |
| LTM / NTM-290 | .290(7.4) | LTM / NTM-480 | .480(12.2)    | LTM / NTM-900 | .900(22.9) |               |            |            |

- NTM MATERIAL: NYLON 6/6, 94V-2, NATURAL. BIVAR MATERIAL CODE 03-NL. BASF ULTRAMID NYLON 6/6 A3K NATURAL.
- LTM MATERIAL: MPPS, 94V-0, BLACK. BIVAR MATERIAL CODE 56-BK.
- GENERAL SPECIFICATIONS: BIVAR MOLDED COMPONENT SPECIFICATION BV00-E101.

| STANDARD TOLERANCE<br>( UNLESS OTHERWISE SPECIFIED ) |                          | BIVAR®  |                       |
|--|--------------------------|---|-----------------------|
| DECIMALS   | ANGULAR                  | 4 THOMAS, IRVINE, CA. 92618<br>TEL: (949) 951-8808 FAX: (949) 951-3974                                  |                       |
| .X ±.1   | X° ±1°                   | <b>TITLE:</b><br>MOLDED, SELF-RETAINING LED MOUNT<br><b>PART NO.:</b> LTM-NTM-XXX<br><b>REVISION:</b> E |                       |
| .XX ±.01   |                          |   |                       |
| .XXX ±.005   |                          |   |                       |
| DESIGNED:<br><b>David Green</b>                      | DATE:<br><b>01/06/03</b> | <b>CAGE CODE :</b> 32559  | <b>SHEET #</b> 1 OF 1 |
| CHECKED:<br><b>M. Chen</b>                           | DATE:<br><b>01/06/03</b> | CAD GENERATED DOCUMENT, DO NOT MEASURE DRAWING.   |                       |