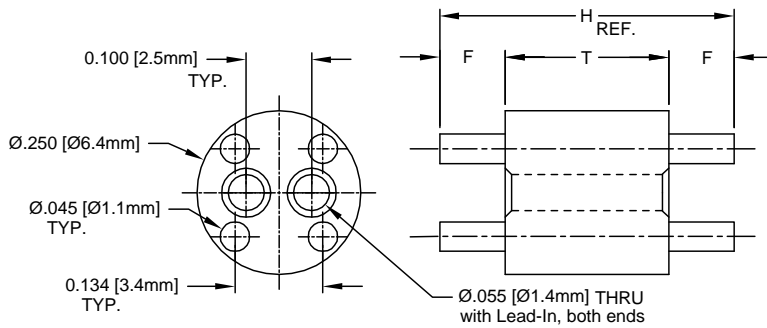


REV.	DESCRIPTION	DATE	APPROVED
E	Engineering Update w/o Changes	02/23/04	M. C.



**457 SERIES**

PART NO.	H	T	F
457-510	.510 (13.0)	.490 (12.4)	.010 (.25)
457-530	.530 (13.5)		.020 (.51)
457-550	.550 (14.0)		.030 (.76)
457-570	.570 (14.5)		.040 (1.0)
457-590	.590 (15.0)		.050 (1.3)
457-610	.610 (15.5)		.060 (1.5)
457-630	.630 (16.0)		.070 (1.8)
457-650	.650 (16.5)		.080 (2.0)
457-670	.670 (17.0)		.090 (2.3)
457-690	.690 (17.5)		.100 (2.5)

**458 SERIES**

PART NO.	H	T	F
458-700	.700 (17.8)	.680 (17.3)	.010 (.25)
458-720	.720 (18.3)		.020 (.51)
458-740	.740 (18.8)		.030 (.76)
458-760	.760 (19.3)		.040 (1.0)
458-780	.780 (19.8)		.050 (1.3)
458-800	.800 (20.3)		.060 (1.5)
458-820	.820 (20.8)		.070 (1.8)
458-840	.840 (21.3)		.080 (2.0)
458-860	.860 (21.8)		.090 (2.3)
458-880	.880 (22.4)		.100 (2.5)

**450 SERIES**

PART NO.	H	T	F
450-050	.050 (1.3)	.030(.76)	.010 (.25)
450-060	.060 (1.5)		.015 (.38)
450-070	.070 (1.8)		.020 (.51)
450-080	.080 (2.0)		.025 (.64)
450-090	.090 (2.3)		.030 (.76)
450-100	.100 (2.5)		.035 (.89)
450-110	.110 (2.8)		.040 (1.0)
450-120	.120 (3.0)		.045 (1.1)
450-130	.130 (3.3)		.050 (1.3)
450-140	.140 (3.6)		.055 (1.4)
450-150	.150 (3.8)		.060 (1.5)
450-160	.160 (4.1)		.065 (1.7)
450-170	.170 (4.3)		.070 (1.8)
450-180	.180 (4.6)		.075 (1.9)
450-190	.190 (4.8)		.080 (2.0)
450-200	.200 (5.1)		.085 (2.2)

**455 SERIES**

PART NO.	H	T	F
455-200	.200 (5.1)	.150(3.8)	.025 (.64)
455-210	.210 (5.3)		.030 (.76)
455-220	.220 (5.6)		.035 (.89)
455-230	.230 (5.8)		.040 (1.0)
455-240	.240 (6.1)		.045 (1.1)
455-250	.250 (6.4)		.050 (1.3)
455-260	.260 (6.6)		.055 (1.4)
455-270	.270 (6.9)		.060 (1.5)
455-280	.280 (7.1)		.065 (1.7)
455-290	.290 (7.4)		.070 (1.8)
455-300	.300 (7.6)		.075 (1.9)
455-310	.310 (7.9)		.080 (2.0)
455-320	.320 (8.1)		.085 (2.2)
455-330	.330 (8.4)		.090 (2.3)
455-340	.340 (8.6)		.095 (2.4)
455-350	.350 (8.9)		.100 (2.5)


**456 SERIES**

PART NO.	H	T	F
456-350	.350 (8.9)	.300(7.6)	.025 (.64)
456-360	.360 (9.1)		.030 (.76)
456-370	.370 (9.4)		.035 (.89)
456-380	.380 (9.7)		.040 (1.0)
456-390	.390 (9.9)		.045 (1.1)
456-400	.400 (10.2)		.050 (1.3)
456-410	.410 (10.4)		.055 (1.4)
456-420	.420 (10.7)		.060 (1.5)
456-430	.430 (10.9)		.065 (1.7)
456-440	.440 (11.2)		.070 (1.8)
456-450	.450 (11.4)		.075 (1.9)
456-460	.460 (11.7)		.080 (2.0)
456-470	.470 (11.9)		.085 (2.2)
456-480	.480 (12.2)		.090 (2.3)
456-490	.490 (12.4)		.095 (2.4)
456-500	.500 (12.7)		.100 (2.5)

**459 SERIES**

PART NO.	H	T	F
459-900	.900 (22.9)	.880 (22.4)	.010 (.25)
459-920	.920 (23.4)		.020 (.51)
459-940	.940 (23.9)		.030 (.76)
459-960	.960 (24.4)		.040 (1.0)
459-980	.980 (24.9)		.050 (1.3)
459-1000	1.000 (25.4)		.060 (1.5)
459-1020	1.020 (25.9)		.070 (1.8)
459-1040	1.040 (26.4)		.080 (2.0)
459-1060	1.060 (26.9)		.090 (2.3)
459-1080	1.080 (27.4)		.100 (2.5)

2. MATERIAL: NYLON 6/6, 94V-2, WHITE. BIVAR MATERIAL CODE 04-WE. BASF ULTRAMID NYLON 6/6 A3K WHITE.
1. GENERAL SPECIFICATIONS: BIVAR MOLDED COMPONENT SPECIFICATION BV00-E101.

STANDARD TOLERANCE (UNLESS OTHERWISE SPECIFIED)		 4 THOMAS, IRVINE, CA. 92618 TEL: (949) 951-8808 FAX: (949) 951-3974			
DECIMALS	ANGULAR				
.X ±.1	X° ±1°	<b>TITLE:</b> T-1(3mm) & T-1 3/4(5mm) MOLDED LED MOUNT			
.XX ±.01					
.XXX ±.005		DESIGNED: <b>Michael Chen</b>	DATE: <b>02/28/03</b>	<b>PART NO:</b> 45X-XXX	REVISION: <b>E</b>
		CHECKED: <b>D. Green</b>	DATE: <b>02/28/03</b>	<b>CAGE CODE:</b> 32559	<b>SHEET #</b> 1 OF 1
CAD GENERATED DOCUMENT. DO NOT MEASURE DRAWING.					