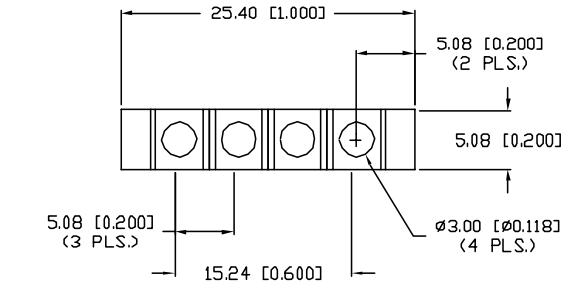


UNCONTROLLED DOCUMENT

PART NUMBER  
LPA-C041301S-X

REV.  
A

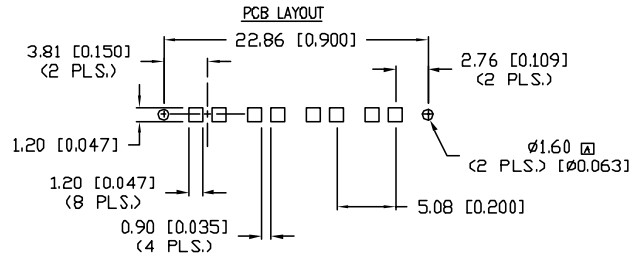
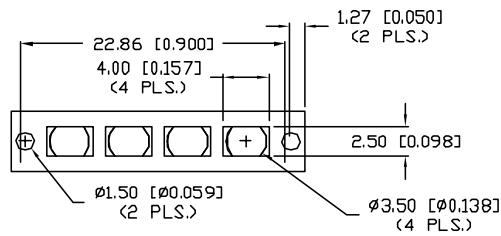
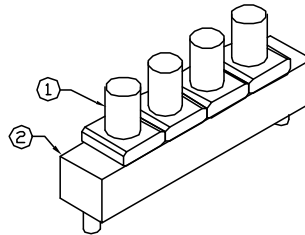
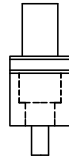
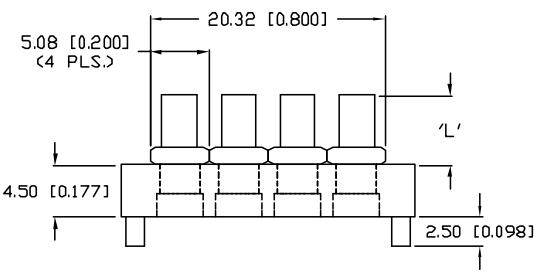
| REV. | E.C.N. NUMBER AND REVISION COMMENTS | DATE    |
|------|-------------------------------------|---------|
| A    | E.C.N. #11355.                      | 10.6.06 |



| DIM 'L' | SUFFIX: -X  |
|---------|-------------|
| 2mm     | -2          |
| 4mm     | -4          |
| 10mm    | -10         |
| 15mm    | -15         |
| 20mm    | -20         |
| 30mm    | -30         |
| 40mm    | -40         |
| 50mm    | -50         |
| CUSTOM  | YOUR LENGTH |

NOTES:

1. MATERIAL: CLEAR POLYCARBONATE, UL94V-0. (LIGHT PIPE)
2. MATERIAL: BLACK NORYL, UL 94V-0. (HOLDER)
3. TEMP. RANGE: -60°C TO +125°C.
4. RECOMMENDED LED: SML-LX0805xx SERIES.



REPLACES PART #: LLP-LXC040301S-X

\*UNLESS OTHERWISE SPECIFIED TOLERANCES PER DECIMAL PRECISION ARE: X=±1 (±0.030), XX=±0.5 (±0.020), XXX=±0.25 (±0.010), XXXX=±0.127 (±0.005). LEAD SIZE=±0.05 (±0.002), LEAD LENGTH=±0.75 (±0.030), MIN= -0.00 DECIMAL PRECISION MAX.= +0.00 DECIMAL PRECISION

UNCONTROLLED DOCUMENT

| REV. | PART NUMBER    |
|------|----------------|
| A    | LPA-C041301S-X |

CONFIDENTIAL INFORMATION  
THE INFORMATION CONTAINED IN THIS DOCUMENT IS THE PROPERTY OF LUMEX INC. EXCEPT AS SPECIFICALLY AUTHORIZED IN WRITING BY LUMEX INC., THE HOLDER OF THIS DOCUMENT SHALL KEEP ALL INFORMATION CONTAINED HEREIN CONFIDENTIAL AND SHALL PROTECT SAME IN WHOLE OR IN PART FROM DISCLOSURE AND DISSEMINATION TO ALL THIRD PARTIES.



290 E. HELEN ROAD  
PALATINE, IL 60067-6976  
PHONE: +1.847.359.2790  
US WEB: www.lumex.com  
TW WEB: www.lumex.com.tw

3mm, QUAD UNIT, VERTICAL SMT LIGHT PIPE.

RELIABILITY NOTE  
OUR MANY YEARS OF EXPERIENCE DATA ACCUMULATION INDICATE THAT SOLDER HEAT IS A MAJOR CAUSE OF EARLY AND FUTURE FAILURE. PLEASE PAY ATTENTION TO YOUR SOLDERING PROCESS.

| DRAWN BY: | CHECKED BY: | APPROVED BY: | DATE:        |
|-----------|-------------|--------------|--------------|
| GB        |             |              | 6.20.02      |
|           |             |              | PAGE: 1 OF 1 |
|           |             |              | SCALE: N/A   |