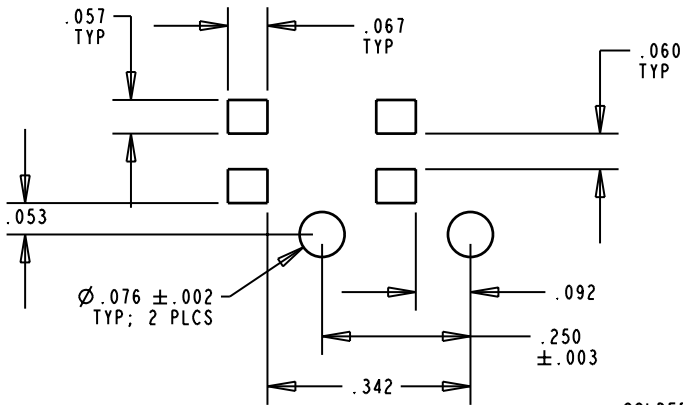
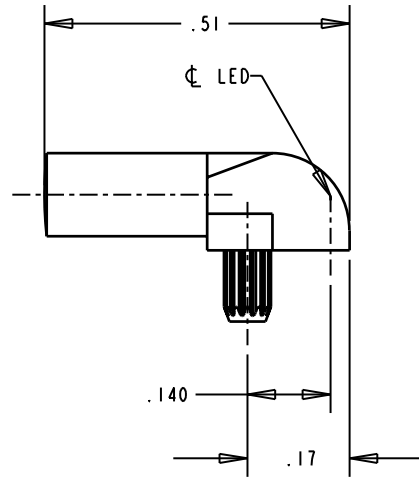
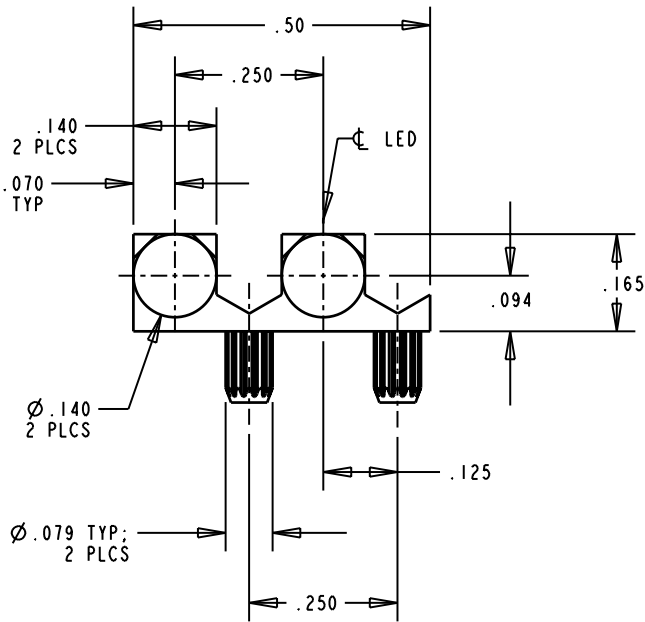


| REV. | ECN NO. | REVISIONS | DRN. | CKD. | APP. | DATE |
|------|---------|-------------|------|------|------|---------|
| A | — | NEW RELEASE | M.C. | — | N.O. | 10-6-97 |



SOLDER PAD/HOLES LAYOUT

DIALIGHT PART NUMBER: 515-1071

| | | |
|---|---|-------|
| THIS DRAWING AND THE CONTENTS HEREIN ARE CONFIDENTIAL AND THE SOLE PROPERTY OF DIALIGHT. REPRODUCTION OF THIS DRAWING OR CONSTRUCTION OF ANY PARTS WITHIN THIS DRAWING ARE FORBIDDEN WITHOUT THE WRITTEN CONSENT OF DIALIGHT. | | |
| SCALE 4:1 | DRAWING NUMBER | REV |
| ALL DIM'S IN: INCHES | C-16293 | A |
| TOLERANCES: UNLESS OTHERWISE SPECIFIED | TITLE 2-ELEMENT LIGHTPIPE | |
| FRACTIONS: $\pm 1/64$ | MATERIAL | |
| DECIMALS (.XX): $\pm .02$ | FINISH: | |
| DECIMALS (.XXX): $\pm .015$ | Dialight | |
| DECIMALS (.XXXX): $\pm .0005$ | 1913 ATLANTIC AVE. MANASQUAN, N.J. 08736 | |
| ANGLES: $\pm 3^\circ$ | FSCM | 83330 |
| | SHEET | OF |
| | FAMILY TABLE: | |