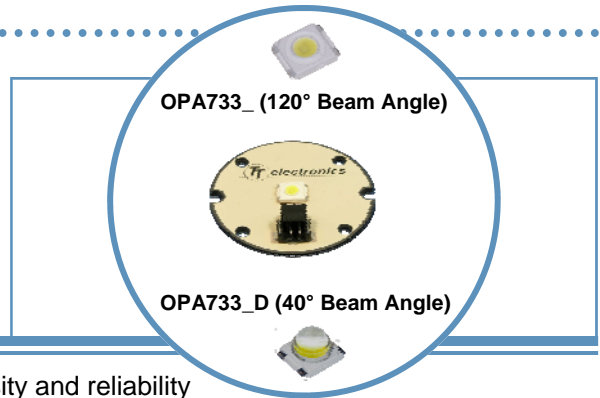


# OPA733 Series

## 1 Watt Light Spot on OptoTherm Linear Heat Spreader

### OPA733 Series

- 1 watt LED on round substrate
- Mono-color per strip (Blue, Green, Red, Yellow, White)
- Two component beam angle options (120° or 40°)
- Universal connector (Tyco 2-292173-2 mates with 173977-2)
- RoHS Compliant



The **OPA733** Series are designed for areas where lighting intensity and reliability are essential. The light beam angles of 40° and 120° are ideal for illuminating small and medium size areas while requiring minimal space. A High Performance Heat Spreader (HPHS) is used to ensure the best heat dissipation of any light assembly in the industry.

For custom colors and design contact your OPTEK representative.

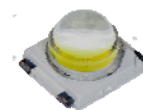
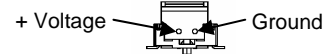
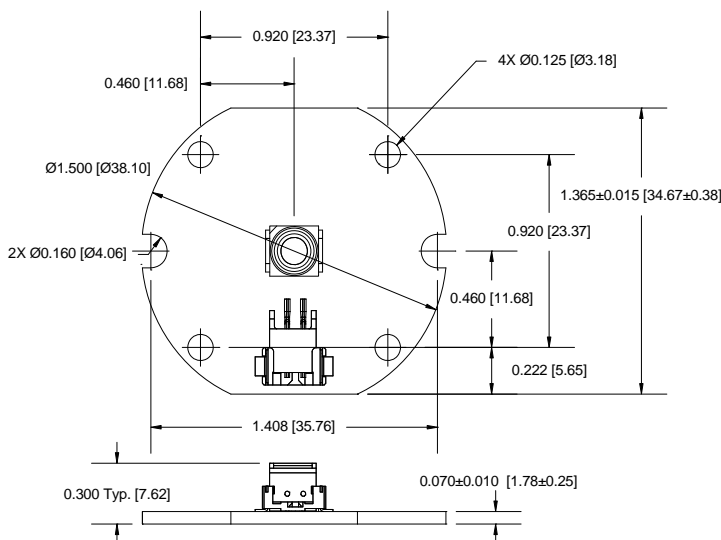
### Electrical / Optical Characteristics: $T_A=25^\circ\text{C}$ , $I_F=350\text{mA}$

| Part Number | Typical Forward Voltage (V) | Luminous Flux (lm) | Beam Angle | Color  | Dominant Wavelength |
|-------------|-----------------------------|--------------------|------------|--------|---------------------|
| OPA733Y     | 2.5                         | 26                 | 120°       | Yellow | 587 nm              |
| OPA733B     | 3.6                         | 9                  |            | Blue   | 470 nm              |
| OPA733G     | 3.6                         | 48                 |            | Green  | 530 nm              |
| OPA733R     | 2.5                         | 35                 |            | Red    | 625 nm              |
| OPA733W     | 3.6                         | 48                 |            | White  | 6,500°K             |
| OPA733YD    | 2.5                         | 26                 | 40°        | Yellow | 587 nm              |
| OPA733BD    | 3.6                         | 9                  |            | Blue   | 470 nm              |
| OPA733GD    | 3.6                         | 48                 |            | Green  | 530 nm              |
| OPA733RD    | 2.5                         | 35                 |            | Red    | 625 nm              |
| OPA733WD    | 3.6                         | 48                 |            | White  | 6,500°K             |



**OPA733\_**

See OVSP\_BCR4 for component specifications



**OPA733\_D**

See OVSP\_4CR44 for component specifications



**DO NOT LOOK DIRECTLY AT LED WITH UNSHIELDED EYES OR DAMAGE TO RETINA MAY OCCUR.**

OPTEK reserves the right to make changes at any time in order to improve design and to supply the best product possible.