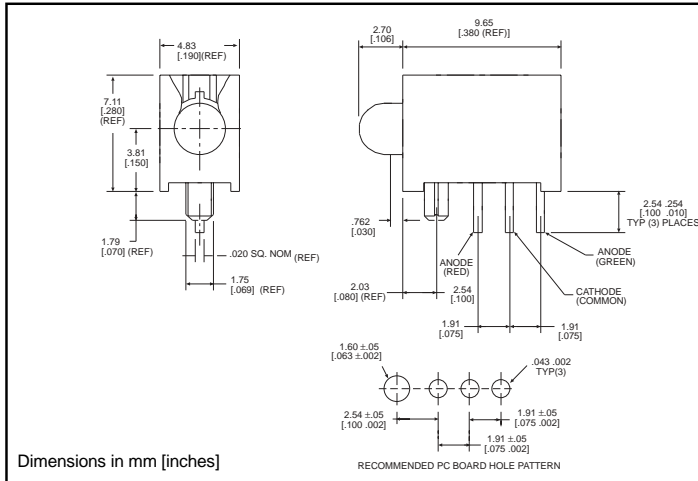




**3mm  
LED CBI® Circuit Board Indicator  
In-line, 3 Leaded Bi-Color**

**Dialight**  
**551-3508-801**



**PART NO.**  
551-3508-801

**COLOR**  
Red/Green

**Features**

- Common Cathode simplifies design, and provides amber as a third color
- Locating pin provides stability during soldering
- Multiple CBIs form horizontal LED arrays on 4.2mm (0.1650") center-lines
- High Contrast, UL 94 V-0 rated, black housing
- Oxygen index: 31.5%
- Polymer content: PBT, 1.055 g
- Housing stand-offs facilitate PCB cleaning
- Solderability per MIL-STD-202F, method 208F
- LEDs are safe for direct viewing per IEC 825-1, EN-60825-1

**Tolerance note: As noted, otherwise:**

- LED Protrusion:  $\pm 0.04$  mm [ $\pm 0.016$ ]
- CBI Housing:  $\pm 0.02$ mm [ $\pm 0.008$ ]

**Typical Operating Characteristics ( $T_A = 25^\circ\text{C}$ )**

See LED data sheet for additional information

See page 4-70 and 4-71 for Reference Only LED Drive Circuit Examples. See page 4-72 for Pin Out

| Part Number  | Color     | Peak Wavelength nm | I <sub>v</sub> mcd | V <sub>F</sub> Volts | Test Current (mA) | LED Data sheet | Page # |
|--------------|-----------|--------------------|--------------------|----------------------|-------------------|----------------|--------|
| 551-3508-801 | Red/Green | 630/560            | 4/4                | 2/2.1                | 20                | 3TF-9484       | 4-69   |