

PART NUMBER	LED COLOR				LED SPEC. CHART
	POSITION 1	POSITION 2	POSITION 3	POSITION 4	
569-0101-111	RED	RED	RED	RED	1
569-0101-212	RED	GREEN	RED	GREEN	1
569-0101-232	RED	GREEN	YELLOW	GREEN	1
569-0101-237	RED	GREEN	YELLOW	ORANGE	1
569-0101-232	RED	ORANGE	YELLOW	GREEN	1
569-0102-222	GREEN	GREEN	GREEN	GREEN	1
569-0102-232	GREEN	GREEN	YELLOW	GREEN	1
569-0102-233	GREEN	GREEN	YELLOW	YELLOW	1
569-0102-237	GREEN	GREEN	YELLOW	ORANGE	1
569-0103-222	YELLOW	GREEN	GREEN	GREEN	1
569-0103-237	YELLOW	GREEN	YELLOW	ORANGE	1
569-0103-323	GREEN	YELLOW	GREEN	YELLOW	1
569-0103-333	YELLOW	YELLOW	YELLOW	YELLOW	1
569-0107-777	ORANGE	ORANGE	ORANGE	ORANGE	1
569-0109-999	BLUE	BLUE	BLUE	BLUE	1
569-0201-111	RED	RED	RED	RED	2
569-0202-222	GREEN	GREEN	GREEN	GREEN	2
569-0202-233	GREEN	GREEN	YELLOW	YELLOW	2
569-0203-333	YELLOW	YELLOW	YELLOW	YELLOW	2
569-0301-111	RED	RED	RED	RED	3
569-0302-222	GREEN	GREEN	GREEN	GREEN	3
569-0302-233	GREEN	GREEN	YELLOW	YELLOW	3
569-0303-333	YELLOW	YELLOW	YELLOW	YELLOW	3
569-0701-111	RED/GREEN	RED/GREEN	RED/GREEN	RED/GREEN	4
569-0701-144	RED/GREEN	RED/GREEN	YELLOW/GREEN	YELLOW/GREEN	4
569-0704-411	YELLOW/GREEN	YELLOW/GREEN	RED/GREEN	RED/GREEN	4
569-0704-444	YELLOW/GREEN	YELLOW/GREEN	YELLOW/GREEN	YELLOW/GREEN	4

OPERATING CHARACTERISTICS AT 25°C AMBIENT						
CHARACTERISTICS	COLOR	MIN	TYP	MAX	UNITS	TEST CONDITIONS
LUMINOUS INTENSITY	RED	1.4	10.0		mcd	I <sub>v</sub> : 10 mA
	YELLOW	7.4	10.0			
	GREEN	4.7	12.6			
	ORANGE	3.4	1.0			
	BLUE	7.1	12.5	10.0		
FORWARD VOLTAGE	RED	2.0	2.8		V	I <sub>v</sub> : 20 mA
	YELLOW	2.1	2.8			
	GREEN	2.1	2.8			
	ORANGE	1.5	2.2	3.0		
	BLUE	3.5	4.1			
REVERSE VOLTAGE	RED	5			V	I <sub>r</sub> : 100 µA
	YELLOW	5				
	GREEN	5				
	ORANGE	5				
	BLUE	5				
PEAK WAVELENGTH	RED		635		nm	MEASURED AT PEAK
	YELLOW		585			
	GREEN		565			
	ORANGE		600			
	BLUE		478			
VIEWING ANGLE 2 θ 1/2	RED		60		DEG.	
	YELLOW		60			
	GREEN		60			
	ORANGE		60			
	BLUE		70			

REV. ECH. NO.	REVISIONS	DRN.	APP.	DATE
A	NEW RELEASE			
B	ADDED 569-0107-777, ORANGE LED SPEC.; ADDED CHANGE TO HOUSING LEAD, PIN NO. WAS 400; SO. Ø 0.040 ± 0.002 WAS Ø.043 ± 0.002	DC		N.O. 9-14-94
C	CHANGED LED SPEC FOR RED, GREEN & YELLOW HOUSING NOTE 1	TC	D.C.	N.O. 5-28-90
D	ADDED 21 PIN'S AND LED SPECS TO HOUSING AND HOUSING NOTE 1 & 2	TC	D.C.	N.O. 8-3-90
E	ADDED P/N: 569-0103-222 UPDATED LED SPEC.	YIS	JMC	N.O. 5-6-03
F	ADDED P/N: 569-0109-999 UPDATED LED SPEC. ADDED NOTES 4 & 5.	JAV		

\* SEE NOTE 4

- NOTE:
- LED LEAD SPACING MEASURED AT HOUSING EXIT.
  - PIN NUMBERS FOR REFERENCE ONLY, DESIGNATION NON-EXISTENT ON PARTS.
  - DIALIGHT PART NUMBER: 569-0101-111, 569-0102-222, 569-0103-333, 569-0107-777
  - ATTENTION: OBSERVE PRECAUTIONS FOR HANDLING ELECTROSTATIC SENSITIVE DEVICES.
  - P/N: 569-0109-999; DIMENSION FOR LED PROTRUSION FROM HOUSING IS .156.

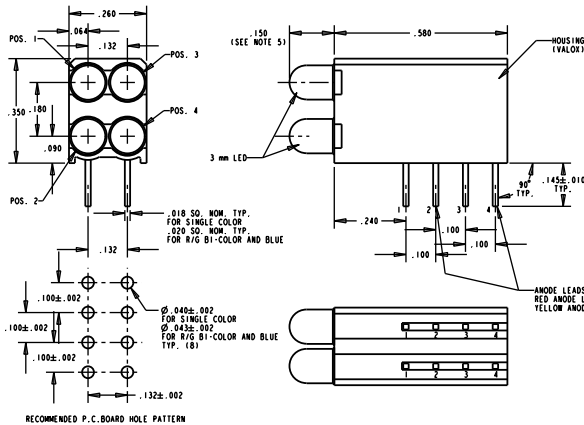


CHART 1

OPERATING CHARACTERISTICS AT 25°C AMBIENT						
CHARACTERISTICS	COLOR	MIN	TYP	MAX	UNITS	TEST CONDITIONS
LUMINOUS INTENSITY	RED	1.0	1.6		mcd	I <sub>v</sub> : 2 mA
	YELLOW	1.0	1.6			
	GREEN	1.0	1.6			
FORWARD VOLTAGE	RED	1.7	2.2		V	I <sub>v</sub> : 2 mA
	YELLOW	1.8	2.2			
	GREEN	1.9	2.7			
REVERSE VOLTAGE	RED	5			V	I <sub>r</sub> : 100 µA
	YELLOW	5				
	GREEN	5				
PEAK WAVELENGTH	RED		635		nm	MEASURED AT PEAK
	YELLOW		585			
	GREEN		565			
	RED		60			
	YELLOW		60			
VIEWING ANGLE 2 θ 1/2	RED		60		DEG.	
	YELLOW		60			
	GREEN		60			

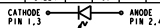


CHART 2

OPERATING CHARACTERISTICS AT 25°C AMBIENT						
CHARACTERISTICS	COLOR	MIN	TYP	MAX	UNITS	TEST CONDITIONS
LUMINOUS INTENSITY	RED	6.7	29.0		mcd	I <sub>v</sub> : 5 V
	YELLOW	3.7	12.6			
	GREEN	5.6	19.0			
FORWARD VOLTAGE	RED	10.0	15.0		V	I <sub>v</sub> : 5 V
	YELLOW	10.0	15.0			
	GREEN	12.0	15.0			
REVERSE VOLTAGE	RED	5			V	I <sub>r</sub> : 100 µA
	YELLOW	5				
	GREEN	5				
PEAK WAVELENGTH	RED		635		nm	MEASURED AT PEAK
	YELLOW		585			
	GREEN		565			
	RED		60			
	YELLOW		60			
VIEWING ANGLE 2 θ 1/2	RED		60		DEG.	
	YELLOW		60			
	GREEN		60			

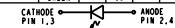


CHART 3

YELLOW/GREEN BI-COLOR LED						
OPERATING CHARACTERISTICS AT 25°C AMBIENT						
CHARACTERISTICS	COLOR	MIN	TYP	MAX	UNITS	TEST CONDITIONS
LUMINOUS INTENSITY	YELLOW	2.5	4.3		mcd	I <sub>v</sub> : 10 mA
	GREEN	2.5	6.3			
FORWARD VOLTAGE	YELLOW	2.1	2.8		V	I <sub>v</sub> : 20 mA
	GREEN	2.1	2.8			
PEAK WAVELENGTH	YELLOW		635		nm	MEASURED AT PEAK
	GREEN		565			
VIEWING ANGLE 2 θ 1/2	RED		80		DEG.	
	YELLOW		80			
	GREEN		80			

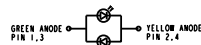
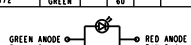


CHART 4

RED/GREEN BI-COLOR LED						
OPERATING CHARACTERISTICS AT 25°C AMBIENT						
CHARACTERISTICS	COLOR	MIN	TYP	MAX	UNITS	TEST CONDITIONS
LUMINOUS INTENSITY	RED	1.7	4.7		mcd	I <sub>v</sub> : 20 mA
	GREEN	1.7	10.0			
FORWARD VOLTAGE	RED	2.0	2.8		V	I <sub>v</sub> : 20 mA
	GREEN	2.1	2.8			
PEAK WAVELENGTH	RED		635		nm	MEASURED AT PEAK
	GREEN		565			
REVERSE VOLTAGE	RED	5			V	I <sub>r</sub> : 100 µA
	YELLOW	5				
	GREEN	5				
VIEWING ANGLE 2 θ 1/2	RED		60		DEG.	
	YELLOW		60			
	GREEN		60			



THIS DRAWING AND THE CONTENTS HEREIN ARE CONFIDENTIAL AND THE SOLE PROPERTY OF DIALIGHT. REPRODUCTION OF THIS DRAWING OR CONSTRUCTION OF ANY PARTS WITHIN THIS DRAWING ARE FORBIDDEN WITHOUT THE WRITTEN CONSENT OF DIALIGHT.			
SCALE: 1" = 1" INCHES	DRAWING NUMBER	REV	
ALL DIM'S IN: INCHES	C-16022	F	
TITLE	BI-LEVEL CBI		
MATERIAL			
FINISH:			
DATE: 8.3.30	1501 ROUTE 34 SOUTH FARMINGDALE, NJ 07121		
SHEET	OF FAMILY TABLES		