

PART NUMBER	LED COLOR
595-2101-002F	RED
595-2101-007F	
595-2101-013F	
595-2201-002F	HI. INTENSITY GREEN
595-2201-007F	
595-2201-013F	
595-2301-002F	GREEN
595-2301-007F	
595-2301-013F	
595-2401-002F	YELLOW
595-2401-007F	
595-2401-013F	
595-2501-002F	ORANGE
595-2501-007F	
595-2501-013F	
595-2701-002F	AllInGp YELLOW
595-2701-007F	
595-2701-013F	

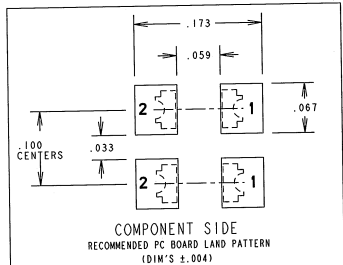
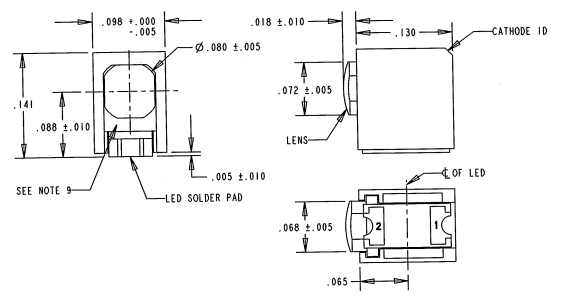
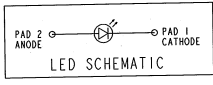
OPERATING CHARACTERISTICS AT 25°C AMBIENT						
CHARACTERISTICS		MIN	TYP	MAX	UNITS	TEST CONDITIONS
LUMINOUS INTENSITY	RED		25.0		mcd	I <sub>f</sub> = 20 mA
	GREEN		11.0			
	YELLOW		9.0			
	ORANGE		9.0			
FORWARD VOLTAGE	RED		1.7	2.0	V	I <sub>f</sub> = 20 mA
	GREEN		2.1	2.5		
	YELLOW		2.2	2.5		
	ORANGE		2.2	2.5		
REVERSE VOLTAGE	RED		4		V	I <sub>r</sub> = 100 µA
	GREEN		4			
	ORANGE		4			
PEAK WAVELENGTH	RED		660		nm	
	GREEN		560			
	YELLOW		580			
	ORANGE		605			

OPERATING CHARACTERISTICS AT 25°C AMBIENT						
CHARACTERISTICS		MIN	TYP	MAX	UNITS	TEST CONDITIONS
LUMINOUS INTENSITY	HI. INT. GREEN		8.5		mcd	I <sub>f</sub> = 10 mA
	AllInGp YELLOW		41.0			
FORWARD VOLTAGE	HI. INT. GREEN		2.2	2.6	V	I <sub>f</sub> = 20 mA
	AllInGp YELLOW		2.02	2.4		
REVERSE CURRENT	HI. INT. GREEN			100	µA	V <sub>r</sub> = 5 V
PEAK WAVELENGTH	HI. INT. GREEN		566		nm	
	AllInGp YELLOW		592			

ABSOLUTE MAXIMUM RATING AT 25°C AMBIENT			
CHARACTERISTICS		MIN	MAX
POWER DISSIPATION	HI. INT. GREEN		65
	AllInGp YELLOW		81
DERATE LINEARLY FROM 75°C (+ FROM 55°C)	HI. INT. GREEN		0.75
	AllInGp YELLOW		0.58 *
CONTINUOUS FORWARD CURRENT	HI. INT. GREEN		25
	AllInGp YELLOW		30
OPERATING TEMPERATURE	ALL		-30 TO 85
STORAGE TEMPERATURE	ALL		-40 TO 100

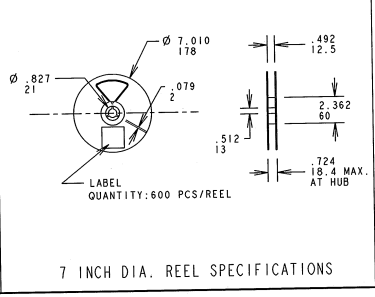
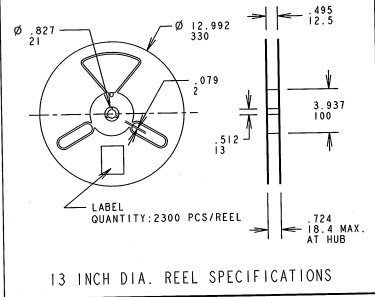
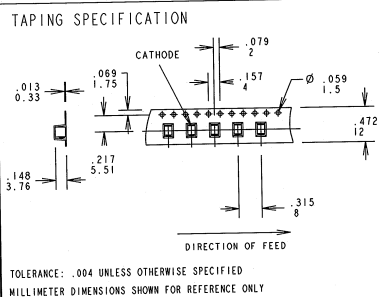
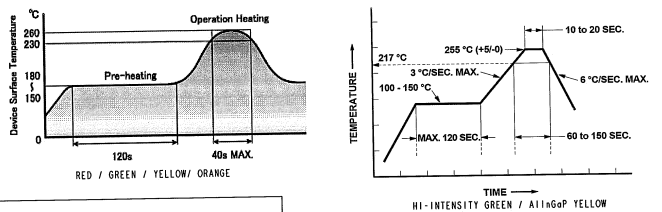
REV	ECN NO	REVISIONS	DRN	CKD	APP	DATE
A		NEW RELEASE	TWC	N.O.	WES	1-12-06
B		NEW RELEASE				4/15/08

ABSOLUTE MAXIMUM RATINGS AT 25°C AMBIENT			
CHARACTERISTICS		MIN	MAX
POWER DISSIPATION	RED		60
	GREEN		75
	YELLOW		75
	ORANGE		75
DERATE LINEARLY FROM 25°C	RED, GRN, YEL		0.42
CONTINUOUS FORWARD CURRENT	RED, GRN, YEL, ORANGE		30
PEAK FORWARD CURRENT (1/10 DUTY CYCLE, 0.1 ms PULSE WIDTH)	RED, GRN, YEL, ORANGE		70
OPERATING TEMPERATURE	RED, GRN, YEL, ORANGE		-30 TO +85
	RED, GRN, YEL, ORANGE		-30 TO 80
STORAGE TEMPERATURE	ORANGE		-40 TO +100



- NOTES:
- 1- MILLIMETER DIMENSIONS SHOWN FOR REFERENCE ONLY.
  - 2- PAD NUMBERS ARE FOR REFERENCE ONLY. DESIGNATION NON-EXISTENT ON PART.
  - 3- STORAGE CONDITIONS FOR TAPED PRODUCT: RE-TAPING MAY BE NECESSARY FOR PRODUCTS STORED MORE THAN TWELVE MONTHS.
  - 4- ORDER QUANTITY IS LED ASSEMBLIES, NOT REELS.
  - 5- ...-002 SUFFIX MEANS PARTS ARE PACKED ON A 20 pc SAMPLE STRIP
  - 6- ...-007 SUFFIX MEANS PARTS ARE PACKED ON A 7 INCH REEL, 600 PCS/REEL
  - 7- ...-013 SUFFIX MEANS PARTS ARE PACKED ON A 13 INCH REEL, 2300 PCS/REEL
  - 8- DIALIGHT PART NUMBERS = 595-2101-002F, 595-2401-007F, 595-2401-013F, 595-2201-013F, 595-2701-002F, 595-2701-007F, 595-2701-013F, LEVEL "3" LABEL ON 595-2101-002F, 595-2101-007F, 595-2101-013F, 595-2301-002F, 595-2301-007F, 595-2301-013F, 595-2401-002F, 595-2401-007F, 595-2401-013F, 595-2501-002F, 595-2501-007F, 595-2501-013F, VACUUM SEAL BAG.
  - 9- PACKAGE ONE HUMIDITY INDICATOR CARD (P/N 9100-999-0662-99) PER BAG.
  - 10- PER LENS INSPECTION PROCEDURE 01-225 THIS AREA CAN HAVE PORTIONS MISSING OF UP TO 50%. NON-CRITICAL AREA BELOW LENS.

RoHS COMPLIANT REFLOW PROFILES



**RoHS Compliant 595-2X01-0XXF Surface Mount CBI**

Part Numbers with the "F" suffix ending are RoHS Compliant.  
 Example: 595-2101-002F  
 Packaging is marked with "RoHS Compliant" label or equivalent markings.  
 Parts can be wave soldered, dip soldered or hand soldered using typical lead-free soldering process with max 260°C temp. for 5 sec.

THIS DRAWING AND THE CONTENTS HEREIN ARE CONFIDENTIAL AND THE SOLE PROPERTY OF DIALIGHT. REPRODUCTION OF THIS DRAWING OR CONSTRUCTION OF ANY PARTS WITHIN THIS DRAWING ARE FORBIDDEN WITHOUT THE WRITTEN CONSENT OF DIALIGHT.	
SCALE: DRAWING SCALE	DRAWING NUMBER
ALL DIM'S IN: INCHES (MM)	C-17345
TOLERANCES: UNLESS OTHERWISE SPECIFIED	REV B
FRACTIONS: 1/16 IN	TITLE SURFACE MOUNT CBI
DECIMALS: 1.0001 ± .01	ROHS COMPLIANT
DECIMALS: 1.0001 ± .005	MATERIAL
ANGLES: .1°	
FINISH:	Dialight
FSC# 83330	1501 ROUTE 34 SOUTH FARMINGDALE, NJ 07727
	SHEET 1 OF 1 FAMILY TABLE: