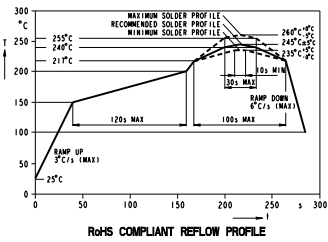
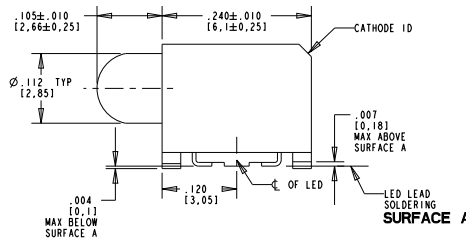
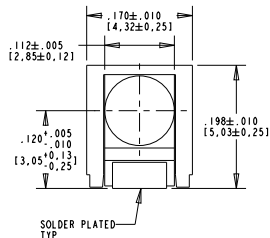


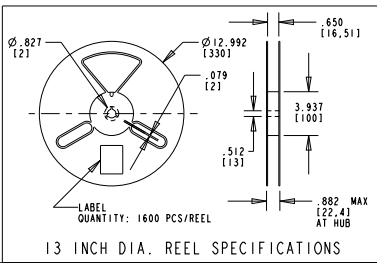
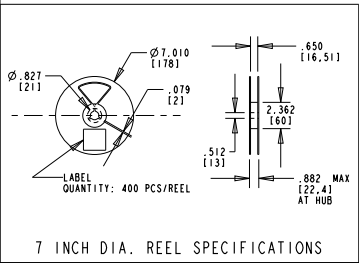
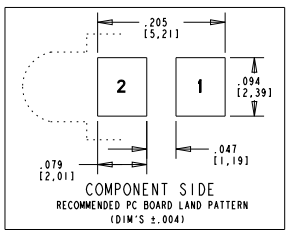
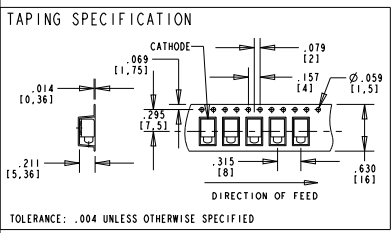
DIALIGHT PART NUMBER	LED COLOR
591-2001-002F	HI. EFFICIENCY RED
591-2001-007F	
591-2001-013F	
591-2101-002F	AlGaAs RED
591-2101-007F	
591-2101-013F	
591-2201-002F	HI. INTENSITY GREEN
591-2201-007F	
591-2201-013F	
591-2301-002F	GREEN
591-2301-007F	
591-2301-013F	
591-2401-002F	YELLOW
591-2401-007F	
591-2401-013F	
591-2601-002F	InGaN BLUE
591-2601-007F	
591-2601-013F	
591-2701-002F	AlInGaP YELLOW
591-2701-007F	
591-2701-013F	
591-2801-002F	InGaN WHITE
591-2801-007F	
591-2801-013F	
591-2901-002F	InGaN GREEN
591-2901-007F	
591-2901-013F	

RoHS Compliant 591-2X01-0XXF
 Part Numbers with the "F" suffix ending are RoHS Compliant.
 For Example: 591-2101-007F
 Packaging is marked with "RoHS Compliant" label or equivalent markings.
 Parts can be reflow soldered per RoHS reflow profile, wave soldered, dip soldered, or hand soldered using typical lead-free soldering process with max 260°C temp. for 5 sec.



LED COLOR	OPERATING CHARACTERISTICS AT 25°C AMBIENT									
	LUMINOUS INTENSITY (mcd)	LUMINOUS INTENSITY (mcd) TEST CONDITION	FORWARD VOLTAGE (V)	REVERSE CURRENT (μA)	DOMINANT WAVELENGTH (nm)	PEAK WAVELENGTH (nm)	VIEWING ANGLE (DEG)			
HI. EFFICIENCY RED	IF = 10mA	2.8 4.5 7.0	IF = 10mA	2.0 2.5 10	622 628 634	635 40				
AlGaAs RED	IF = 10mA	11 18 28	IF = 10mA	1.75 2.5 10	633 645 655	660 40				
HI. INTENSITY GREEN	IF = 10mA	7 12 18	IF = 10mA	2.0 2.5 10	564 570 576	572 40				
GREEN	IF = 10mA	3.5 4.8 7.0	IF = 10mA	2.0 2.5 10	564 570 576	572 40				
YELLOW	IF = 10mA	3.5 5.7 9.0	IF = 10mA	2.0 2.5 10	580 587 595	586 40				
InGaN BLUE	IF = 10mA	4.5 6.0 11.2	IF = 10mA	3.5 4.3 10	462 465 468	428 40				
AlInGaP YELLOW	IF = 20mA	35 50 70	IF = 20mA	2.0 2.4 10	580 587 595	591 40				
InGaN WHITE	IF = 10mA	90 135 180	IF = 10mA	3.1 3.7 10	*: 285; **: 335; 401	— 40				
InGaN GREEN	IF = 20mA	90 160 280	IF = 20mA	3.4 4.05 10	515 525 535	523 40				

LED COLOR	ABSOLUTE MAXIMUM RATINGS AT 25°C AMBIENT						
	POWER DISSIPATION (mW)	CONT. FWD CURRENT (mA)	PEAK FORWARD CURRENT (mA) (t ≤ 10ms, D ≤ 0.05)	LINEAR DERATION	REVERSE VOLTAGE (V)	OPERATING TEMPERATURE	STORAGE TEMPERATURE
HI. EFFICIENCY RED	95	30	500	0.75 mA/°C FROM 60°C	12	-40°C / +100°C	-40°C / +100°C
AlGaAs RED	90	30	500	0.75 mA/°C FROM 60°C	12	-40°C / +100°C	-40°C / +100°C
HI. INTENSITY GREEN	95	30	500	0.75 mA/°C FROM 60°C	12	-40°C / +100°C	-40°C / +100°C
GREEN	95	30	500	0.75 mA/°C FROM 60°C	12	-40°C / +100°C	-40°C / +100°C
YELLOW	95	30	500	0.75 mA/°C FROM 60°C	12	-40°C / +100°C	-40°C / +100°C
InGaN BLUE	90	20	200	0.44 mA/°C FROM 85°C	5	-40°C / +100°C	-40°C / +100°C
AlInGaP YELLOW	80	30	200	1.0 mA/°C FROM 85°C	12	-40°C / +100°C	-40°C / +100°C
InGaN WHITE	80	20	200	0.6 mA/°C FROM 75°C	5	-40°C / +100°C	-40°C / +100°C
InGaN GREEN	114	20	100 (t ≤ 1ms, D ≤ 0.1)	0.5 mA/°C FROM 50°C	5	-55°C / +100°C	-55°C / +100°C



- NOTES :
- PAD NUMBERS ARE FOR REFERENCE ONLY, DESIGNATION NON-EXISTENT ON PART.
 - STORAGE CONDITIONS FOR TAPED PRODUCT: RE-TAPING MAY BE NECESSARY FOR PRODUCTS STORED MORE THAN TWELVE MONTHS.
 - ORDER QUANTITY IS LED ASSEMBLIES, NOT REELS.
 - ...002F SUFFIX MEANS PARTS ARE PACKED ON A 20 pc SAMPLE STRIP
 ...007F SUFFIX MEANS PARTS ARE PACKED ON A 7 INCH REEL, 400 pcs/REEL
 ...013F SUFFIX MEANS PARTS ARE PACKED ON A 13 INCH REEL, 1600 pcs/REEL
 - LENS MOVEMENT IN RELATIONSHIP TO THE HOUSING IS .009" T.I.R. VERTICALLY AND .007" T.I.R. HORIZONTALLY.
 - FRONT AND REAR TERMINALS OF THE ASSEMBLY TO BE WITHIN .005 COPLANARITY.
 - DIALIGHT PART NUMBERS : 591-2X01-002F, 591-2X01-007F, 591-2X01-013F
 - MOISTURE SENSITIVITY LEVEL: "2a" FOR P/N'S 591-2901-0XXF
 "2" FOR ALL OTHER P/N'S
 - THIS ASSEMBLY CONTAINS ELECTROSTATIC DISCHARGE SENSITIVE DEVICES (ESDS). MAINTAIN ALL PRECAUTIONARY MEASURES DURING ASSEMBLY, HANDLING AND STORAGE IN ACCORDANCE WITH IPC-A-610.



THIS DRAWING AND THE CONTENTS HEREIN ARE CONFIDENTIAL AND THE SOLE PROPERTY OF DIALIGHT. REPRODUCTION OF THIS DRAWING OR CONSTRUCTION OF ANY PARTS WITHIN THIS DRAWING ARE FORBIDDEN WITHOUT THE WRITTEN CONSENT OF DIALIGHT.	
SCALE: 8.000	DRAWING NUMBER
ALL DIM'S IN INCHES (MM)	C-17354
UNLESS OTHERWISE SPECIFIED	REV D
FRACTIONS: 1/164	TITLE SURFACE MOUNT CBI - ROUND LENS
DECIMALS: 1.XXX; 2.00	RoHS COMPLIANT
ANGLES: 8°P	MATERIAL
FINISH:	Dialight
FSCN 83330	1501 ROUTE 34 SOUTH FARMINGDALE, N.J. 07727
	SHEET 1 OF 1 FAMILY TABLE