

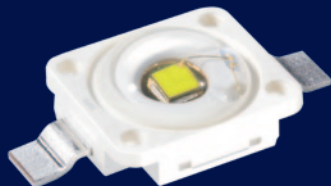


LED

Golden DRAGON® Plus

An LED with remarkable brightness

Available in a choice of whites from cosy warm to a cool, highly efficient 6,500 K, as well as a range of colors from red to blue, OSRAM Opto Semiconductors' Golden DRAGON® Plus is a bright and exceptionally durable LED. Its outstanding efficiency of more than 100 lm/W makes it the ideal answer to today's need for sustainable indoor and outdoor lighting solutions.



OSRAM
Opto Semiconductors

Golden DRAGON® Plus



Industrial Lighting



Tunnel Lighting



Urban Lighting

| Golden DRAGON® Plus | | | | | |
|---------------------|------------------------|-----------------|---------|------------|------------|
| Type | Color | CCT/Wavelength | Type | Color | Wavelength |
| LUW W5AM | cool white (CRI 70) | 5500 K - 7000 K | LA W5AM | amber-red | 617 nm |
| LW W5AM | cool white (CRI 80) | 4500 K - 7000 K | LY W5AM | yellow | 590 nm |
| LCW W5AM.EC | warm white (CRI 82) | 2700 K - 4500 K | LT W5AM | true green | 523 nm |
| LCW W5AM.PC | neutral white (CRI 70) | 4000 K - 5000 K | LV W5AM | verde | 505 nm |
| LH W5AM | hyper red | 645 nm | LB W5AM | blue | 470 nm |
| LR W5AM | red | 625 nm | LD W5AM | deep blue | 455 nm |

Advantages

Excellent brightness

The Golden DRAGON® Plus is available from 2,700 to 7,000 K. The 6,500 K ultra white LED with 112 lm @ 350 mA minimum offers efficiencies of more than 100 lm/W. Even in pleasant 3,000 K warm white, the Golden DRAGON® Plus delivers typ. 80 lm (approx. 72 lm/W), making it an ideal alternative to the less efficient standard light source. A recent addition to the portfolio is the high-efficiency type ".PC". It is 15% more efficient than the existing types and is available in different neutral white color temperatures (4,000 - 5,000 K).

Robustness and long lifetime

Thanks to its excellent thermal and mechanical design, the Golden DRAGON® Plus meets the challenges of Solid State Lighting applications. With its exceptional lifetime of more than 50,000 hours (depending on application conditions), it is perfect for modern and sustainable lighting solutions.

Great flexibility

The Golden DRAGON® Plus can be used both with reflectors and with lenses. In addition, it comes in a full white color temperature range as well as in a variety of colors, offering designers excellent flexibility for creative approaches and new solutions.

Features

- Full white color spectrum: cool white, neutral white, warm white
- Broad color portfolio: red, green, blue and other colors
- Outcoupling lens $\pm 85^\circ\text{C}$
- Radiation characteristics well suited for secondary optics
- Maximum junction temperature of 135°C
- Thermal resistance R_{thJS} typ. 6.5 K/W, max. 11 K/W

Applications

Solid State Lighting

- Streets and tunnels
- White interior and exterior lighting

- Industrial lighting
- Interior lighting and spots
- Recessed downlights
- Linear lights and cove lighting
- Decorative and design luminaires
- Fluorescent replacement
- Shop lighting: food (freezers, shelves), non-food (under cabinet)
- Horticultural lighting

Signs and traffic

- Traffic lights
- Warning lights
- Beacon lights

Industrial

- Bar code scanner

Golden DRAGON® Plus on the Internet:

www.osram-os.com/dragonplus

For further information on the available products please visit our product catalog at <http://catalog.osram-os.com>

Asia

OSRAM Opto Semiconductors Asia Ltd.
30/F China Resources Building
26 Harbour Road, Wan Chai
Hong Kong SAR
Phone: +852 3652 5522
Fax: +852 2802 0880
E-mail: prasia@osram-os.com

Europe

OSRAM Opto Semiconductors GmbH
Leibnizstrasse 4
D-93055 Regensburg, Germany
Phone: +49 941 850 1700
Fax: +49 941 850 3302
E-mail: support@osram-os.com

USA

OSRAM Opto Semiconductors Inc.
1150 Kifer Road, Suite 100
Sunnyvale, CA 94086, USA
Main Phone number: (408) 962-3700
Main Fax: (408) 738-9120
Inbound Toll Free: (866) 993-5211
E-mail: info@osram-os.com