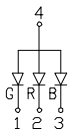
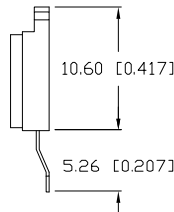
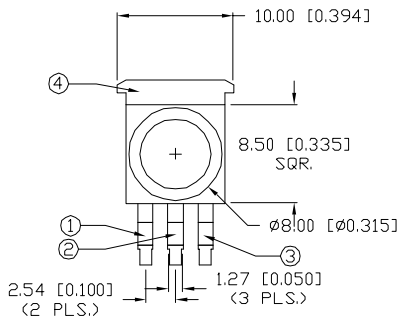
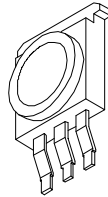
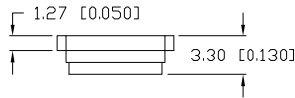


UNCONTROLLED DOCUMENT

PART NUMBER  
SML-LX1610RGBW/A

REV.



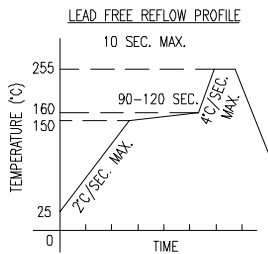
ELECTRO-OPTICAL CHARACTERISTICS  $T_A=25^{\circ}\text{C}$

PARAMETER	MIN	TYP	MAX	UNITS	TEST COND
PEAK WAVELENGTH		626 (RED)		nm	
		525 (GREEN)		nm	
		470 (BLUE)		nm	
FORWARD VOLTAGE	(R)	2.1	2.79	$V_f$	$I_f=300\text{mA}$
	(G)	3.5	3.99	$V_f$	$I_f=350\text{mA}$
	(B)	3.5	3.99	$V_f$	$I_f=350\text{mA}$
REVERSE VOLTAGE		5.0		$V_r$	$I_r=100\mu\text{A}$
TOTAL FLUX	(R/G/B)	25/25/8		lm	
VIEWING ANGLE		110		2x theta	
EMITTED COLOR:	RED/GREEN/BLUE				
EPOXY LENS FINISH:	WHITE DIFFUSED				

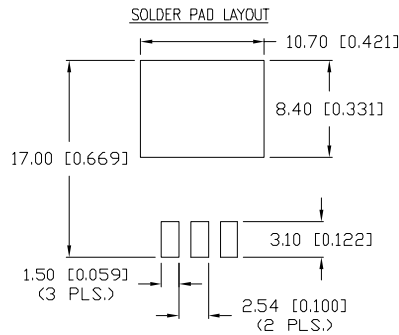
LIMITS OF SAFE OPERATION AT 25°C

PARAMETER	COLORS	MAX	UNITS
PEAK FORWARD CURRENT*	(R/G/B)	350/500/500	mA
STEADY CURRENT	(R/G/B)	300/350/350	mA
POWER DISSIPATION		3.5	W
OPERATING TEMP.		-30 TO +85	°C
STORAGE TEMP.		-30 TO +85	°C
SOLDERING TEMP.		+260	°C
2.0mm FROM BODY			3 SEC. MAX

\* $T < 10\mu\text{s}$



TOTAL TIME ABOVE 220°C IS 60 SECONDS MAX.



CAUTION: STATIC SENSITIVE DEVICE  
FOLLOW PROPER E.S.D. HANDLING PROCEDURES  
WHEN WORKING WITH THIS PART.

NOTES:

1. 50 PCS. IN EACH TUBE.



UNCONTROLLED DOCUMENT

\*UNLESS OTHERWISE SPECIFIED TOLERANCES PER DECIMAL PRECISION ARE: X=±1 (±0.039), XX=±0.5 (±0.020), XXX=±0.25 (±0.010), XXXX=±0.127 (±0.005). LEAD SIZE=±0.05 (±0.002), LEAD LENGTH=±0.75 (±0.030). MIN= +DECIMAL PRECISION MAX= +0.00 -DECIMAL PRECISION

REV. PART NUMBER  
SML-LX1610RGBW/A

10.60 x 10mm HIGH POWER LED, RGB LEDs.

CONFIDENTIAL INFORMATION  
THE INFORMATION CONTAINED IN THIS DOCUMENT IS THE PROPERTY OF LUMEX INC. EXCEPT AS SPECIFICALLY AUTHORIZED IN WRITING BY LUMEX INC., THE HOLDER OF THIS DOCUMENT SHALL KEEP ALL INFORMATION CONTAINED HEREIN CONFIDENTIAL AND SHALL PROTECT SAME IN WHOLE OR IN PART FROM DISCLOSURE AND DISSEMINATION TO ALL THIRD PARTIES.

RELIABILITY NOTE  
OUR MANY YEARS OF EXPERIENCE DATA ACCUMULATION INDICATE THAT SOLDER HEAT IS A MAJOR CAUSE OF EARLY AND FUTURE FAILURE. PLEASE PAY ATTENTION TO YOUR SOLDERING PROCESS.



290 E. HELEN ROAD  
PALATINE, IL 60067-6976  
PHONE: +1.847.359.2790  
US WEB: www.lumex.com  
TW WEB: www.lumex.com.tw

DRAWN BY: CHECKED BY: APPROVED BY: DATE: 10.14.08  
JN PAGE: 1 OF 1  
SCALE: N/A