

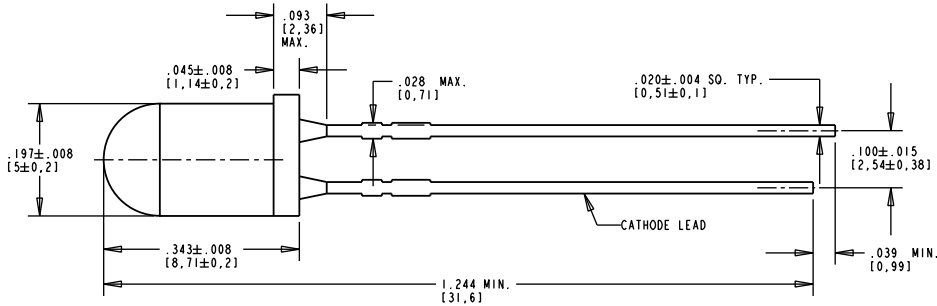
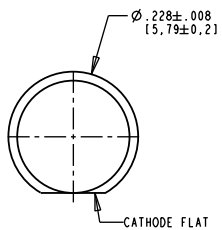
OPERATING CHARACTERISTICS AT Ta= 25°C				
LED CHARACTERISTICS	MIN.	TYP.	MAX.	UNITS TEST CONDITIONS
LUMINOUS INTENSITY	880		2500	mcd If = 20 mA
VIEWING ANGLE (2 θ 1/2)		30		deg.
FORWARD VOLTAGE	3.8	4.0		V If = 20 mA
REVERSE CURRENT	10			µA V _R = 5 V

ABSOLUTE MAXIMUM RATINGS AT Ta= 25°C		
PARAMETER	VALUE	UNITS
DC FORWARD CURRENT	30	mA
PEAK FORWARD CURRENT	100	mA
POWER DISSIPATION	120	mW
REVERSE VOLTAGE (I _R = 10µA)	5	V
OPERATING TEMPERATURE RANGE	-40 to +80	°C
STORAGE TEMPERATURE RANGE	-40 to +100	°C
DIP-DRAW SOLDER TEMPERATURE	260 FOR 5 SECS.	°C

REV.	ECN NO.	REVISIONS	DRN.	CKD.	APP.	DATE
A		NEW RELEASE	JAV			

NOTES:

1. LENS COLOR: WHITE.
2. LEADS: SOLDER DIP MILD STEEL.
3. LEAD SPACING MEASURED NEAR EPOXY PACKAGE.
4. SOLDER ADHERANCE: BOTH LEADS PER MIL. STD. 202E, METHOD 208C.
5. ATTENTION: OBSERVE PRECAUTIONS FOR HANDLING ELECTROSTATIC SENSITIVE DEVICES. FOR EYE SAFETY DO NOT STARE DIRECTLY INTO THE LIGHT BEAM OF THESE LED DEVICES AT CLOSE RANGE.
6. DIALIGHT PART NUMBER: 521-9948



BIN	LIMITS (CHROMATICITY COORDINATES)			
	X	Y	Z	U
1	0.330	0.330	0.356	0.361
	0.360	0.318	0.351	0.385
2	0.287	0.296	0.330	0.330
	0.295	0.276	0.318	0.339
3	0.264	0.280	0.296	0.283
	0.267	0.248	0.276	0.305
4	0.283	0.287	0.330	0.330
	0.305	0.295	0.339	0.360

THIS DRAWING AND THE CONTENTS HEREIN ARE CONFIDENTIAL AND THE SOLE PROPERTY OF DIALIGHT. REPRODUCTION OF THIS DRAWING OR CONSTRUCTION OF ANY PARTS WITHIN THIS DRAWING ARE FORBIDDEN WITHOUT THE WRITTEN CONSENT OF DIALIGHT.		
SCALE 6:1 ALL DIM'S IN: INCHES (MM)	DRAWING NUMBER	REV
TOLERANCES: UNLESS OTHERWISE SPECIFIED FRACTIONS: ±1/64 DECIMALS (.XX): ±.01 DECIMALS (.XXX): ±.008	C-17093	A
ANGLES: ±1° FINISH:	TITLE	
	Ø 5.0 mm WHITE LED	
	MATERIAL	
FSCN 83330	Dialight	1501 ROUTE 34 SOUTH FARMINGDALE, NJ 07727
	SHEET OF	FAMILY TABLE: