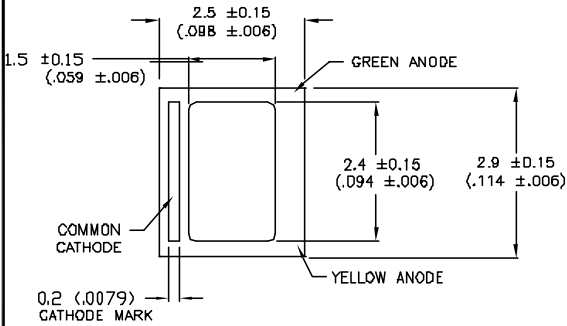
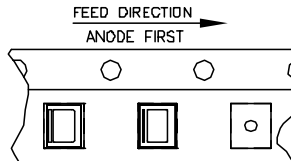
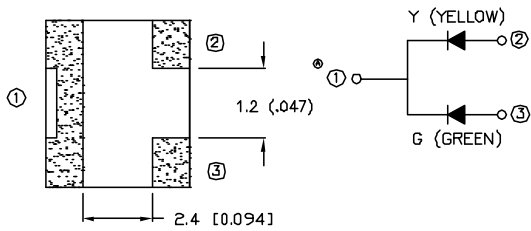
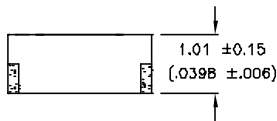


UNCONTROLLED DOCUMENT



UNDER REVISION



PART NUMBER
CCL-LX253YGC

REV.
C

REV.	E.C.N. NUMBER AND REVISION COMMENTS	DATE
A	ADDED NUMB. TO CLARIFY CHIP CIRCUITRY./	8.31.95
B	E.C.N. #10BRDR./	10.17.97
C	E.C.N. #1114B.	12.06.06

ELECTRO-OPTICAL CHARACTERISTICS TA=25 °C					IF=20mA
PARAMETER	MIN	TYP	MAX	UNITS	TEST COND
PEAK WAVELENGTH		585 (YELLOW)		nm	
		565 (GREEN)		nm	
FORWARD VOLTAGE (Y/G)		2.1	2.5	V _f	
REVERSE VOLTAGE	5.0				I _f =100uA
AXIAL INTENSITY (Y/G)		20		med	I _f =20mA
VIEWING ANGLE		90		2x theta	
EMITTED COLOR :	YELLOW/GREEN				
EPOXY LENS FINISH:	WATER CLEAR				

LIMITS OF SAFE OPERATION AT 25 DEG. C		
PARAMETER	MAX	UNITS
PEAK FORWARD CURRENT (Y/G) *	150/150	mA
STEADY CURRENT (Y/G)	30/25	mA
POWER DISSIPATION (Y/G)	105/105	mW
DERATE FROM 25 °C	-1.0	mW/ °C
OPERATING, STORAGE TEMP.	-45 TO +85	°C
LEAD SOLDERING TEMP.	+250	
		3 SEC. MAX

* I<10uS



*UNLESS OTHERWISE SPECIFIED TOLERANCES PER DECIMAL PRECISION ARE: X=±1 (±0.030), XX=±0.5 (±0.020), XXX=±0.25 (±0.010), XXXX=±0.127 (±0.005). LEAD SIZE=±0.05 (0.002), LEAD LENGTH=±0.75 (±0.030). MIN=+DECIMAL PRECISION MAX=-DECIMAL PRECISION

UNCONTROLLED DOCUMENT

REV. C	PART NUMBER CCL-LX253YGC
CERAMIC CHIP, BICOLOR, SURFSCE MOUNT LED WATER CLEAR LENS, YELLOW/GREEN.	

CONFIDENTIAL INFORMATION
THE INFORMATION CONTAINED IN THIS DOCUMENT IS THE PROPERTY OF LUMEX INC. EXCEPT AS SPECIFICALLY AUTHORIZED IN WRITING BY LUMEX INC., THE HOLDER OF THIS DOCUMENT SHALL KEEP ALL INFORMATION CONTAINED HEREIN CONFIDENTIAL AND SHALL PROTECT SAME IN WHOLE OR IN PART FROM DISCLOSURE AND DISSEMINATION TO ALL THIRD PARTIES.

RELIABILITY NOTE
OUR MANY YEARS OF EXPERIENCE DATA ACCUMULATION INDICATE THAT SOLDER HEAT IS A MAJOR CAUSE OF EARLY AND FUTURE FAILURE. PLEASE PAY ATTENTION TO YOUR SOLDERING PROCESS.

	290 E. HELEN ROAD PALATINE, IL 60067-6976 PHONE: +1.847.359.2790 US WEB: www.lumex.com TW WEB: www.lumex.com.tw		
	DRAWN BY: JC	CHECKED BY:	APPROVED BY: