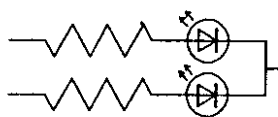
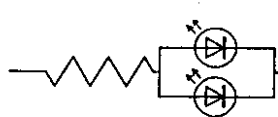


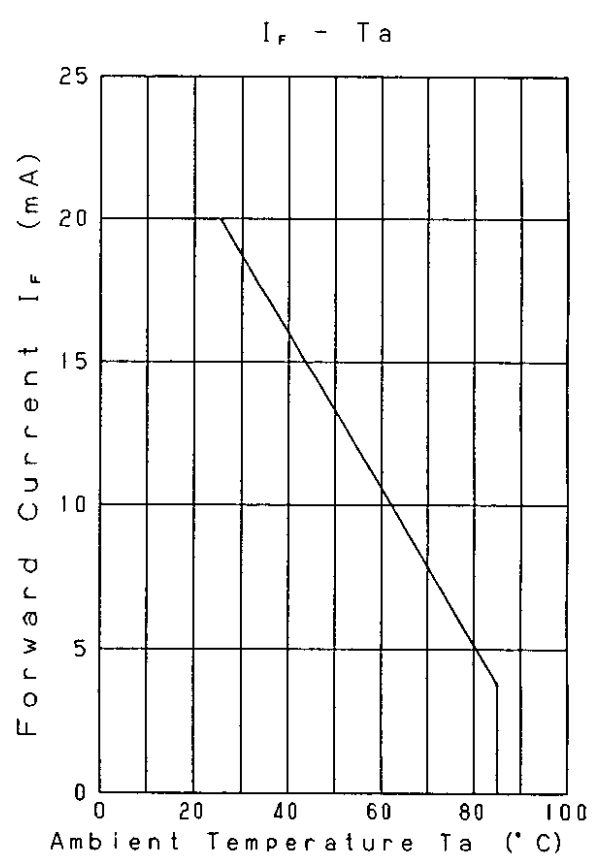
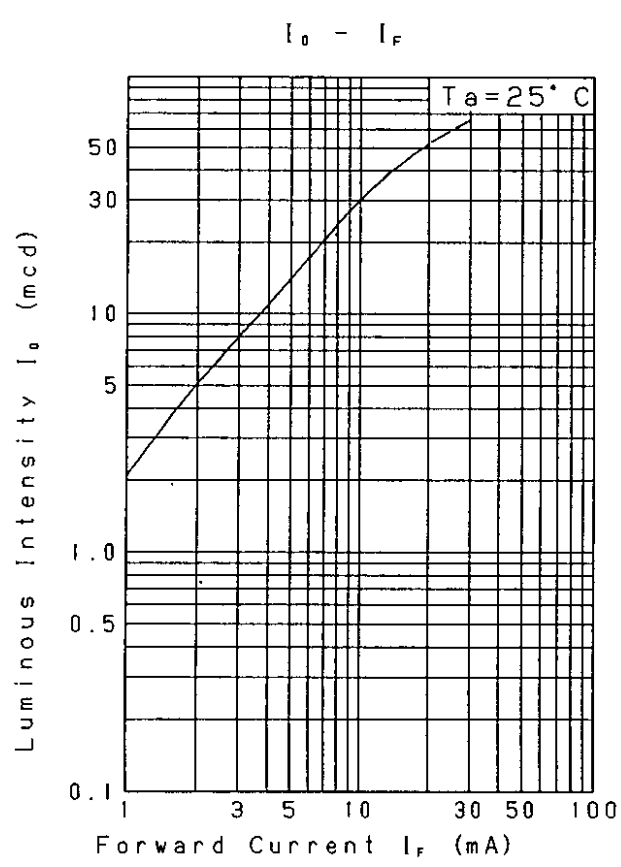
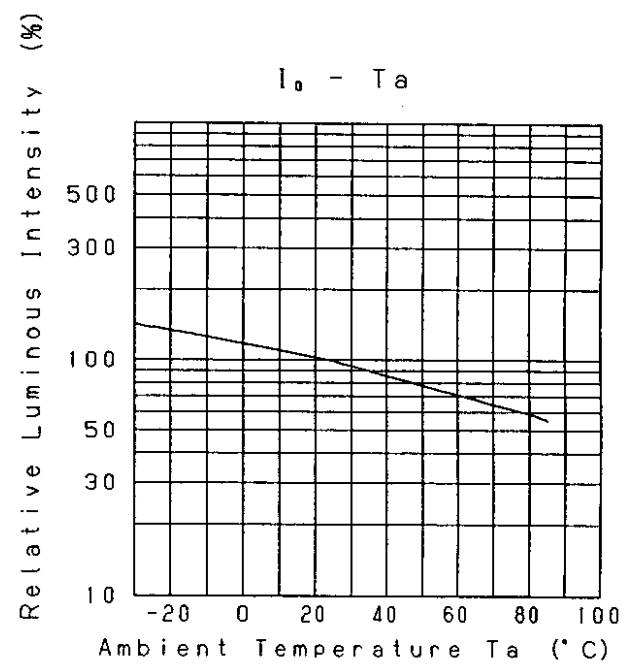
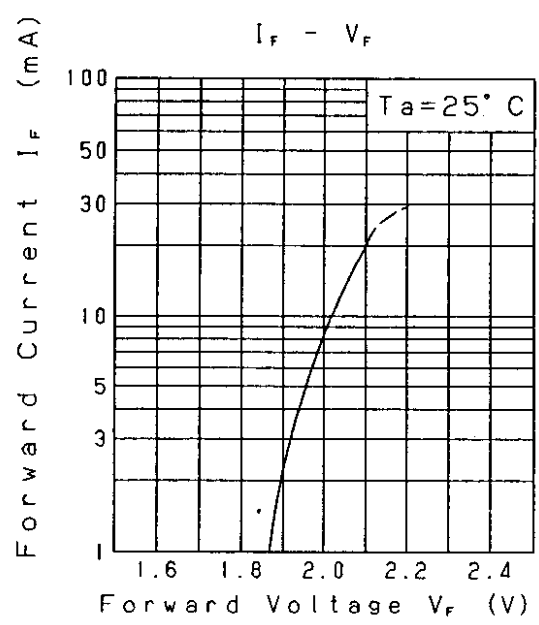
Approved	Checked	Designed	DEVELOPMENT SPECIFICATION					
		<i>T. Takata</i>	P/N: LNJ318C83RA1				TEMPORARY	
TYPE			Green Light Emitting Diode					
APPLICATION			Indicators					
MATERIAL			InGaAlP					
OUTLINE			Attached					
ABSOLUTE MAXIMUM RATINGS			P	*1 I _{FP}	I _{FDC}	V _R	Topr	Tstg
			55	60	20	4	-30~+85	-40~+100
			mW	mA	mA	V	°C	°C
CONDITION			Ta=25±3°C					
Test Specification								
Item	Symbol	Condition	Typ	Limit		Unit		
				Min	Max			
Forward Voltage	V _F	I _F =10mA	2.03		2.5	V		
Reverse Leakage Current	I _R	V _R =4V			10	μA		
Luminous Intensity #2	I _O	I _F =10mA DC	30	16		mcd		
Peak Emission Wavelength	λ _p	I _F =10mA DC	575			nm		
Spectral Line Half Width	Δλ	I _F =10mA DC	15			nm		
<p>*1. The Condition of I_{FP} is duty 10%, Pulse width 1ms</p> <p>*2. Tolerance of luminous intensity: ±20%.</p> <p>NOTE</p> <p>★1. Please contact the Panasonic local office if you design at low current (below 1mA DC) or pulse current operation and have any questions.</p> <p>★2. Soldering conditions...Refer to Handling note.</p> <p>★3. Compositions of the lead... Cu/Ni/Au plating</p> <p>★4. Package...Clear type.</p> <p>★4. Beware of destruction by static electricity in handling the LED.</p> <p>★5. Circuit to operate LED.</p>								
					(A) Recommended circuit.			
					(B) The difference of brightness between the LED could be found due to the V _F characteristics of each LED.			
Nov. 7. 2001								

Approved	Checked	Designed
		T. Tabata

DEVELOPMENT SPECIFICATION

P/N: LNJ318C83RA1

TEMPORARY



Nov. 7. 2001

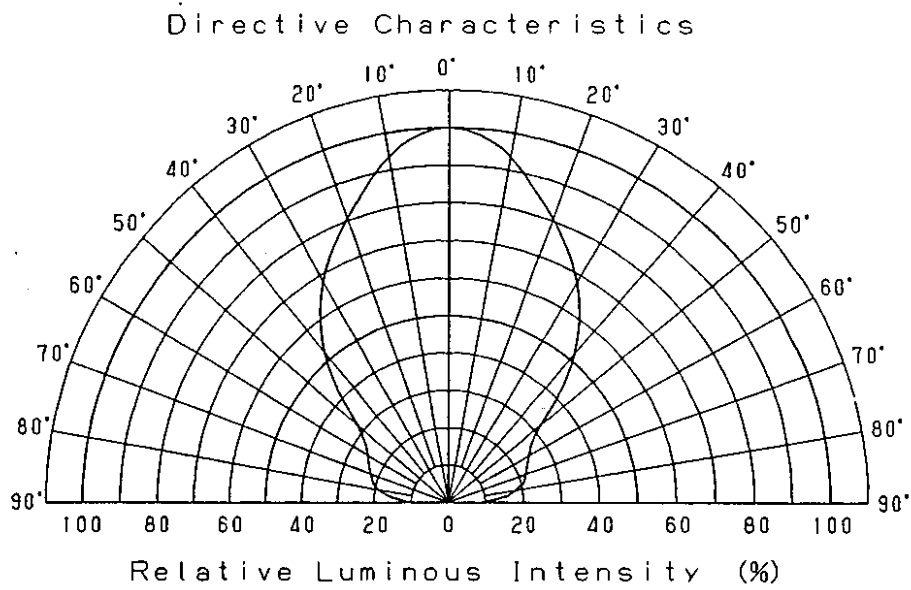
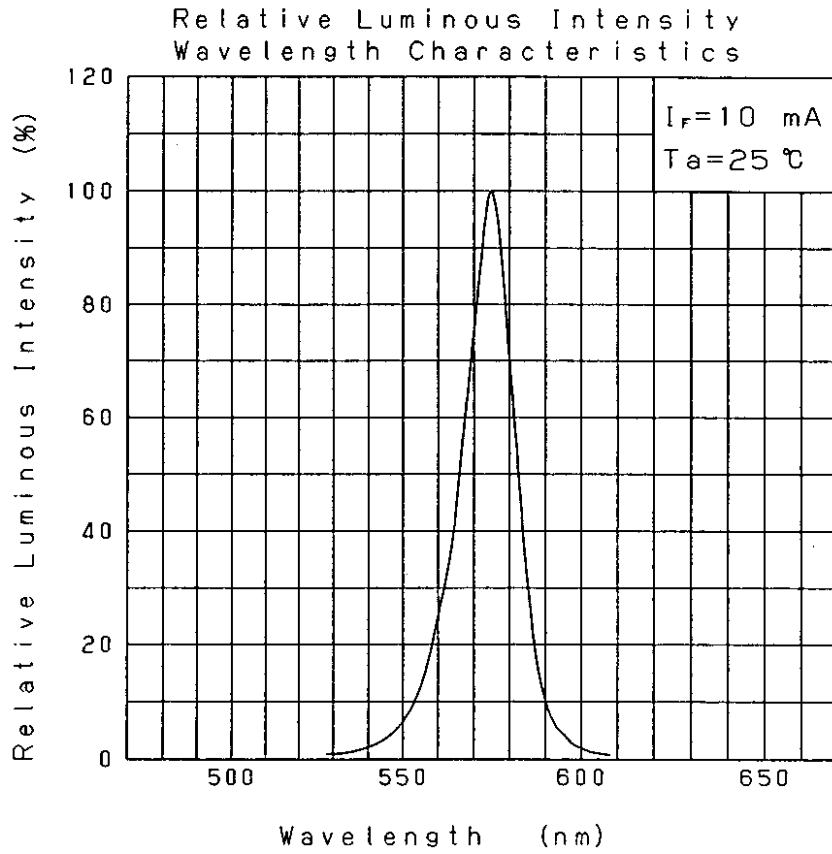
Downloaded from Elcodis.com electronic components distributor

Approved	Checked	Designed
		T. Takato

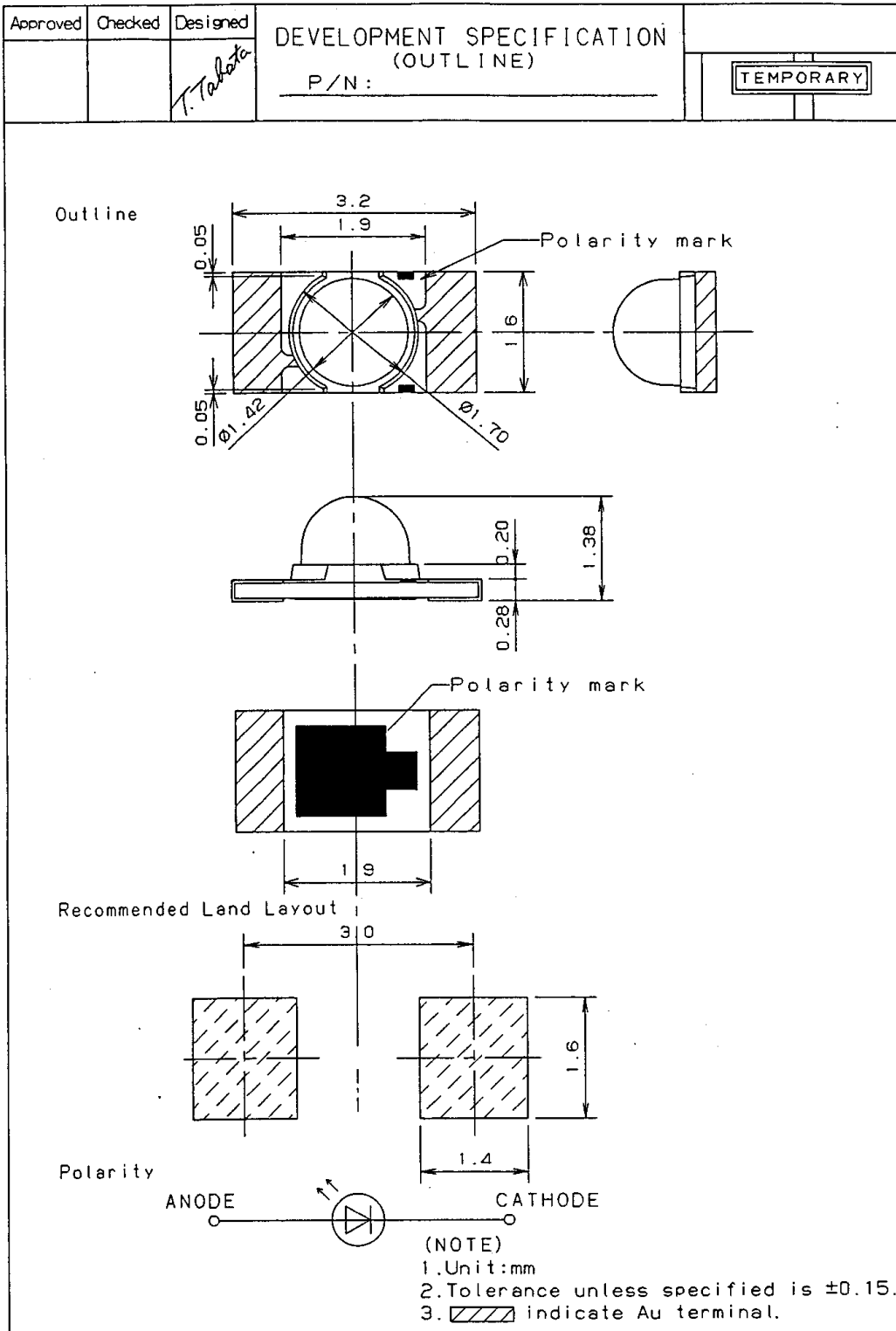
DEVELOPMENT SPECIFICATION

P/N: LNJ318C83RA1

TEMPORARY



Nov. 7. 2001



Nov. 7. 2001			
--------------	--	--	--

Panasonic KAGOSHIMA MATSUSHITA ELECTRONICS CO., LTD. KB-H-022-018B