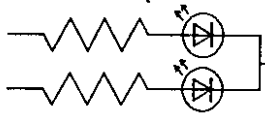
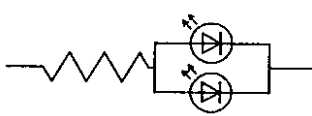


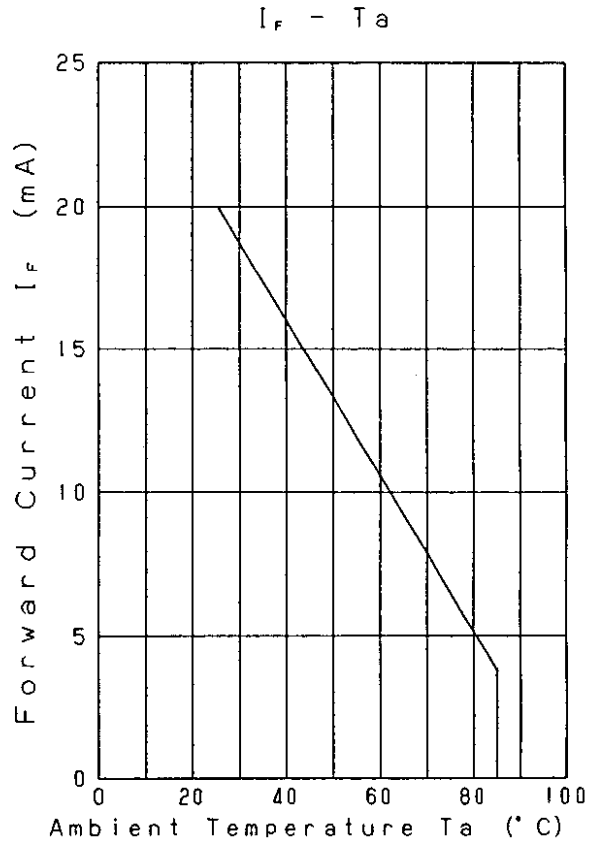
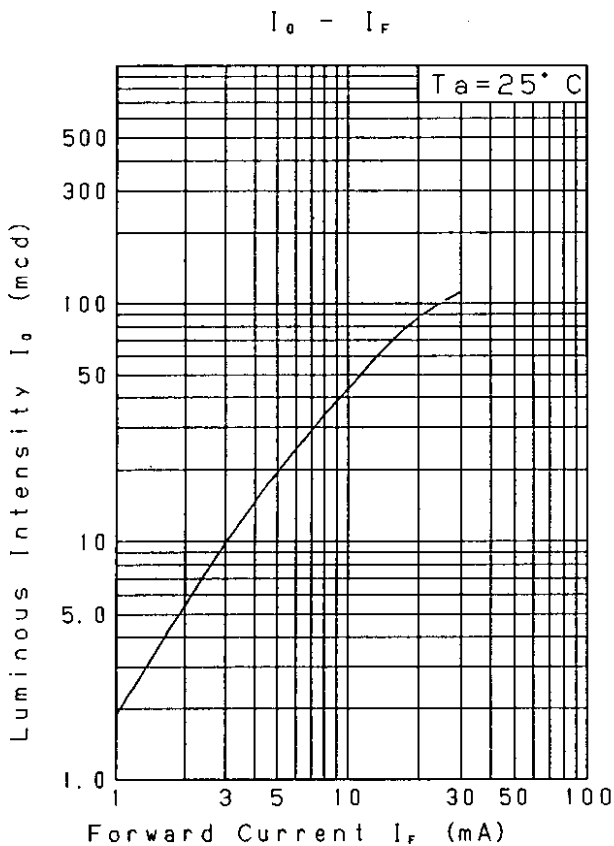
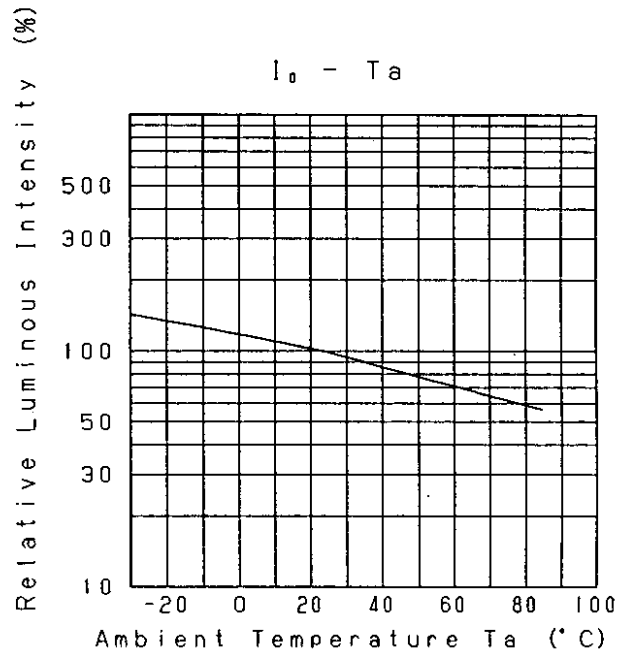
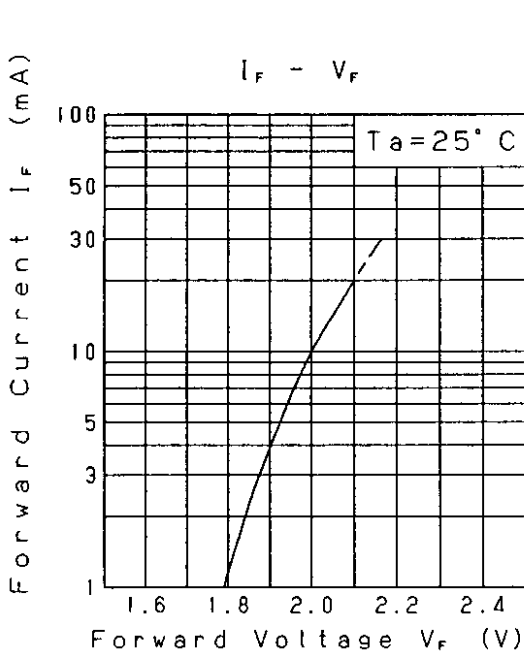
Approved	Checked	Designed	DEVELOPMENT SPECIFICATION					
		T. Tabata	P/N: LNJ418C84RA1				TEMPORARY	
TYPE			Amber Light Emitting Diode					
APPLICATION			Indicators					
MATERIAL			InGaAlP					
OUTLINE			Attached					
ABSOLUTE MAXIMUM RATINGS			P	*I <sub>FP</sub>	I <sub>FDC</sub>	V <sub>R</sub>	Topr	Tstg
			55	60	20	4	-30~+85	-40~+100
			mW	mA	mA	V	°C	°C
CONDITION			T <sub>a</sub> = 25 ± 3°C					
Test Specification								
Item	Symbol	Condition	Typ	Limit		Unit		
				Min	Max			
Forward Voltage	V <sub>F</sub>	I <sub>F</sub> = 10 mA	2.0		2.5	V		
Reverse Leakage Current	I <sub>R</sub>	V <sub>R</sub> = 4 V			100	μA		
Luminous Intensity	I <sub>O</sub>	I <sub>F</sub> = 10 mA DC	42.5	22.7		mcd		
Peak Emission Wavelength	λ <sub>p</sub>	I <sub>F</sub> = 10 mA DC	595			nm		
Spectral Line Half Width	Δλ	I <sub>F</sub> = 10 mA DC	15			nm		
<p>*1. The Condition of I<sub>FP</sub> is duty 10%, Pulse width 1 ms</p> <p>*2. Tolerance of luminous intensity: ±20%.</p> <p>NOTE</p> <p>★1. Please contact the Panasonic local office if you design at low current (below 1mA DC) or pulse current operation and have any questions.</p> <p>★2. Soldering conditions... Refer to Handling note.</p> <p>★3. Compositions of the lead ... Cu/Ni/Au plating</p> <p>★4. Beware of destruction by static electricity in handling the LED.</p> <p>★5. Circuit to operate LED.</p>								
							<p>(A) Recommended circuit.</p> <p>(B) The difference of brightness between the LED could be found due to the V<sub>F</sub> characteristics of each LED.</p>	
Nov. 7. 2001								

Approved	Checked	Designed
		T. Tabata

DEVELOPMENT SPECIFICATION

P/N: LNJ418C84RA1

TEMPORARY



Nov. 7. 2001

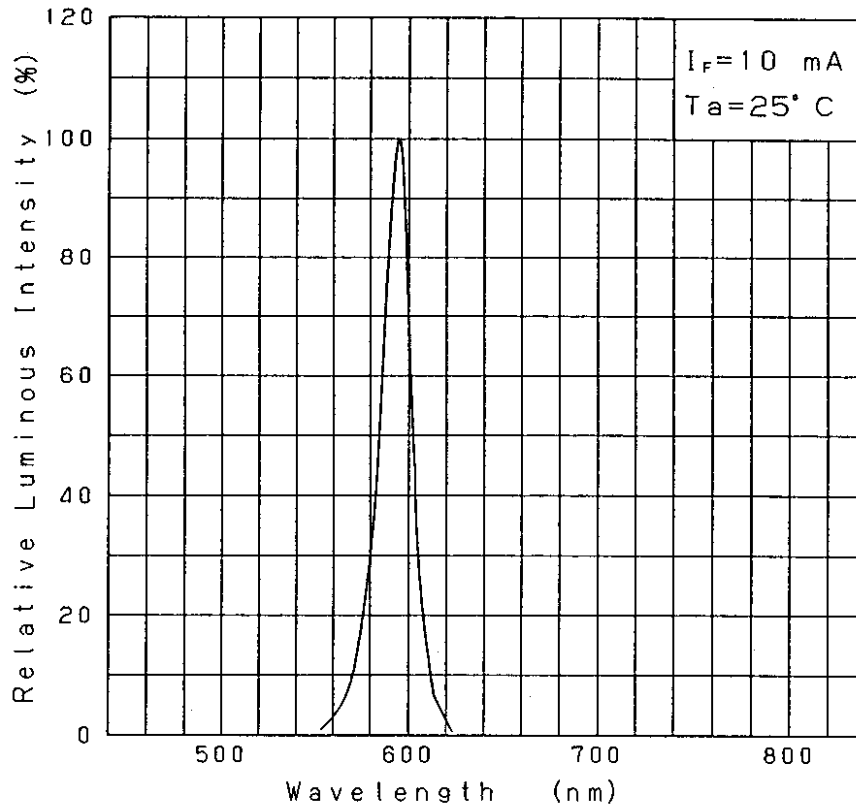
Approved	Checked	Designed
		T. Tabata

DEVELOPMENT SPECIFICATION

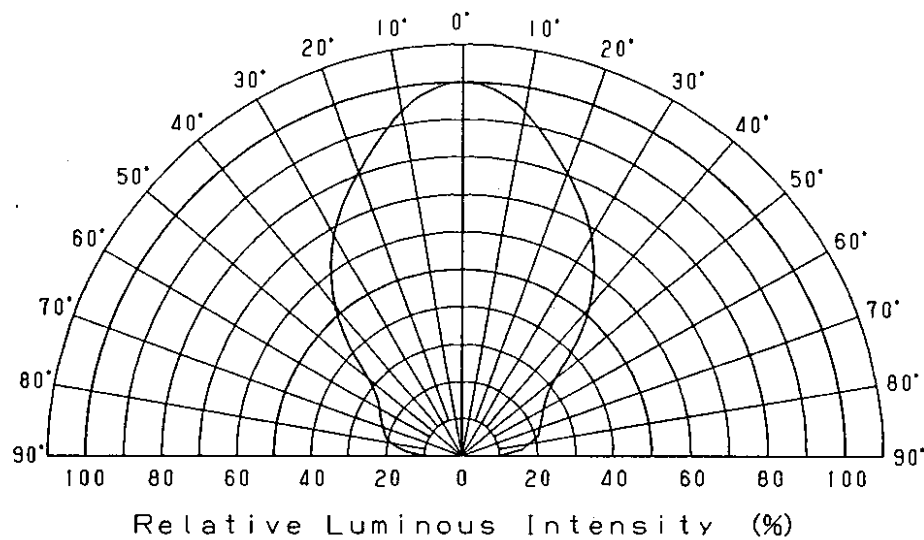
P/N: LNJ418C84RA1

TEMPORARY

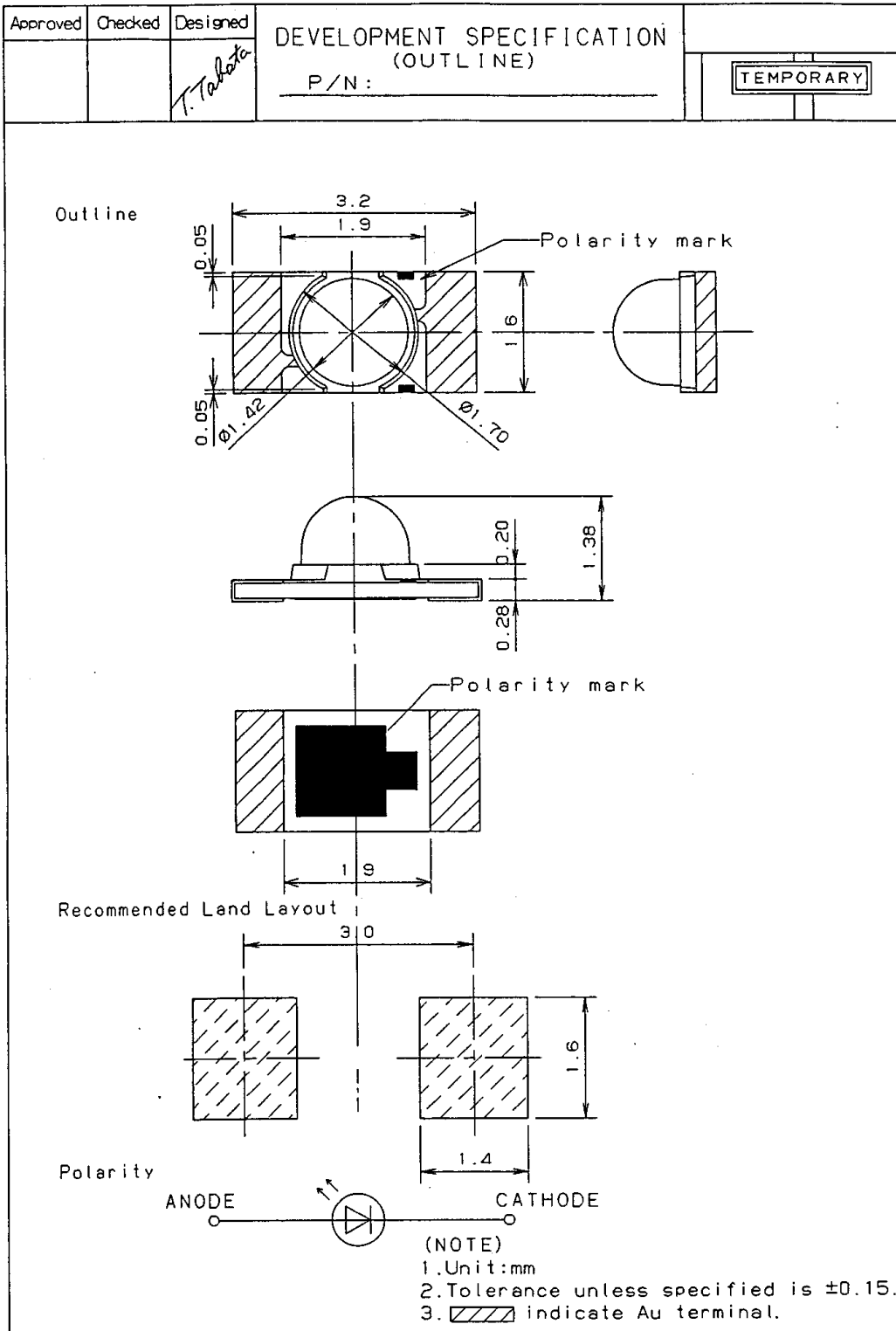
Relative Luminous Intensity  
Wavelength Characteristics



Directive Characteristics



Nov. 7. 2001



Nov. 7. 2001			
Panasonic KAGOSHIMA MATSUSHITA ELECTRONICS CO., LTD. KB-H-022-018B			