

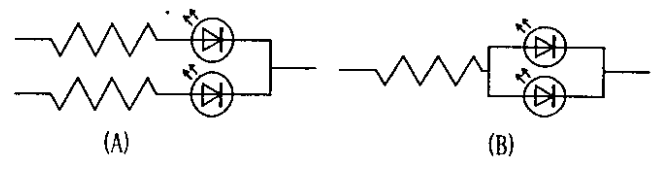
Approved	Checked	Designed	DEVELOPMENT SPECIFICATION	P/N: LNJ 218C82RA1	TEMPORARY
		T. Takata			

T Y P E	Red Light Emitting Diode					
APPLICATION	Indicators					
MATERIAL	InGaAlP					
OUTLINE	Attached					
ABSOLUTE MAXIMUM RATINGS	P	*1 I _{FP}	I _{FDC}	V _R	Topr	Tstg
	55	60	20	4	-30~+85	-40~+100
	mW	mA	mA	V	°C	°C
CONDITION	T _a = 25 ± 3°C					

Test Specification						
I t e m	Symbol	C o n d i t i o n	Typ	Limit		Unit
				Min	Max	
Forward Voltage	V _F	I _F = 10 mA	1.92		2.5	V
Reverse Leakage Current	I _R	V _R = 4 V			100	μA
Luminous Intensity #2	I _O	I _F = 10 mA DC	37	19.7		mcd
Peak Emission Wavelength	λ _p	I _F = 10 mA DC	645			nm
Spectral Line Half Width	Δλ	I _F = 10 mA DC	22			nm

- #1. The Condition of I_{FP} is duty 10%, Pulse width 1 ms
- #2. Tolerance of luminous intensity: ±20%.

- NOTE
- ★1. Please contact the Panasonic local office if you design at low current (below 1mA DC) or pulse current operation and have any questions.
 - ★2. Soldering conditions...Refer to Handling note.
 - ★3. Compositions of the lead ... Cu/Ni/Au plating
 - ★4. Package...Clear type.
 - ★5. Beware of destruction by static electricity in handling the LED.
 - ★6. Circuit to operate LED.



(A) Recommended circuit.
 (B) The difference of brightness between the LED could be found due to the V_F characteristics of each LED.

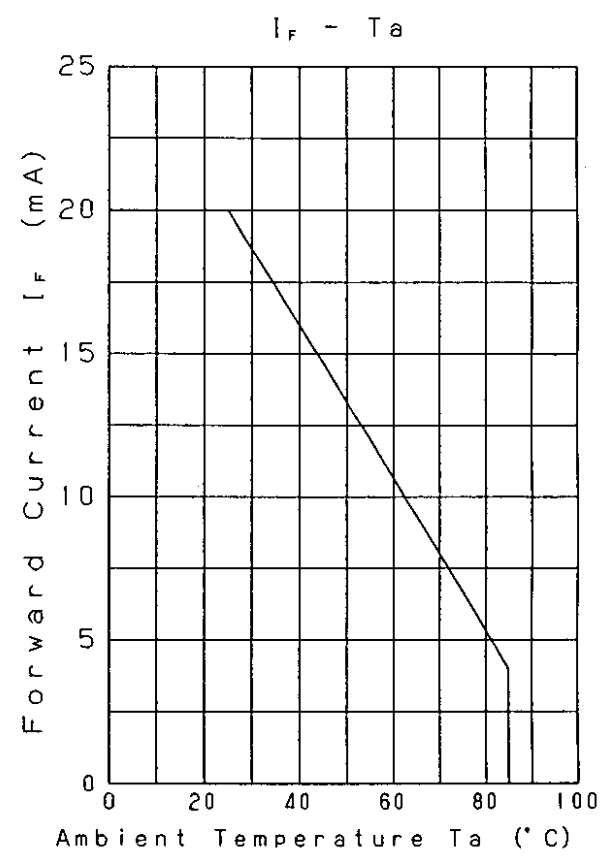
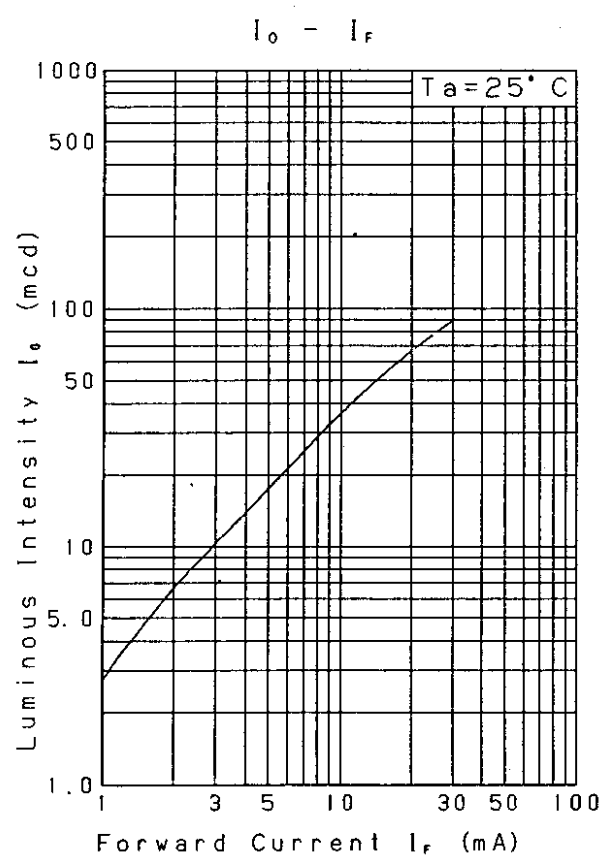
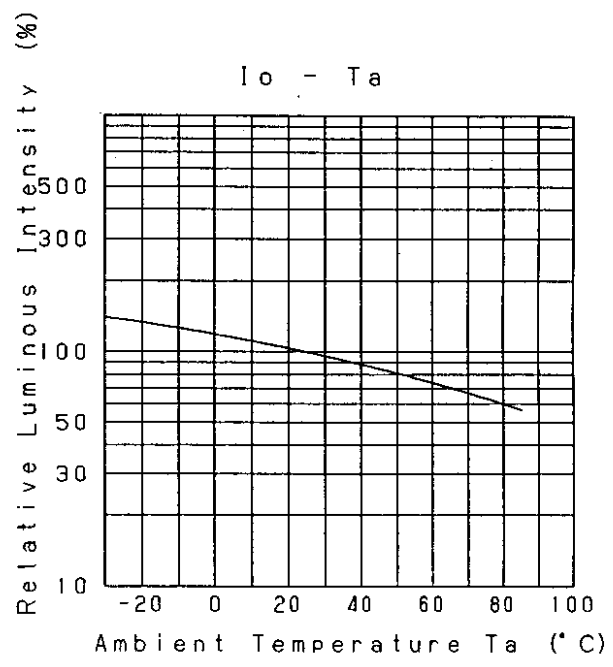
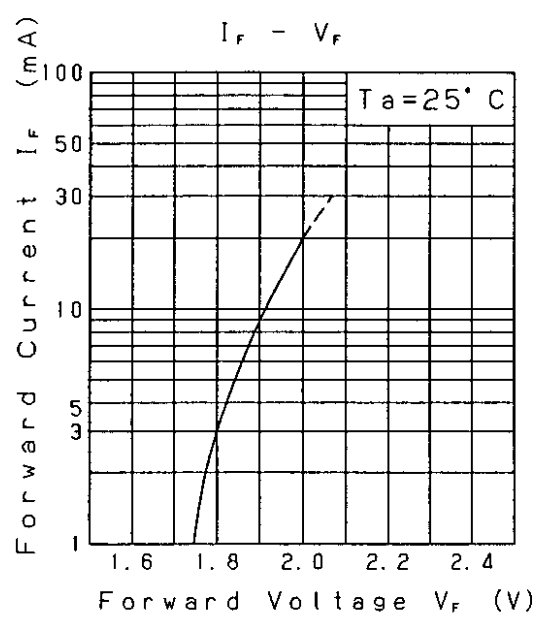
Nov. 7. 2001			
--------------	--	--	--

Approved	Checked	Designed
		T. Takata

DEVELOPMENT SPECIFICATION

P/N: LNJ218C82RA1

TEMPORARY



Nov. 7. 2001		

Downloaded from Elcodis.com electronic components distributor

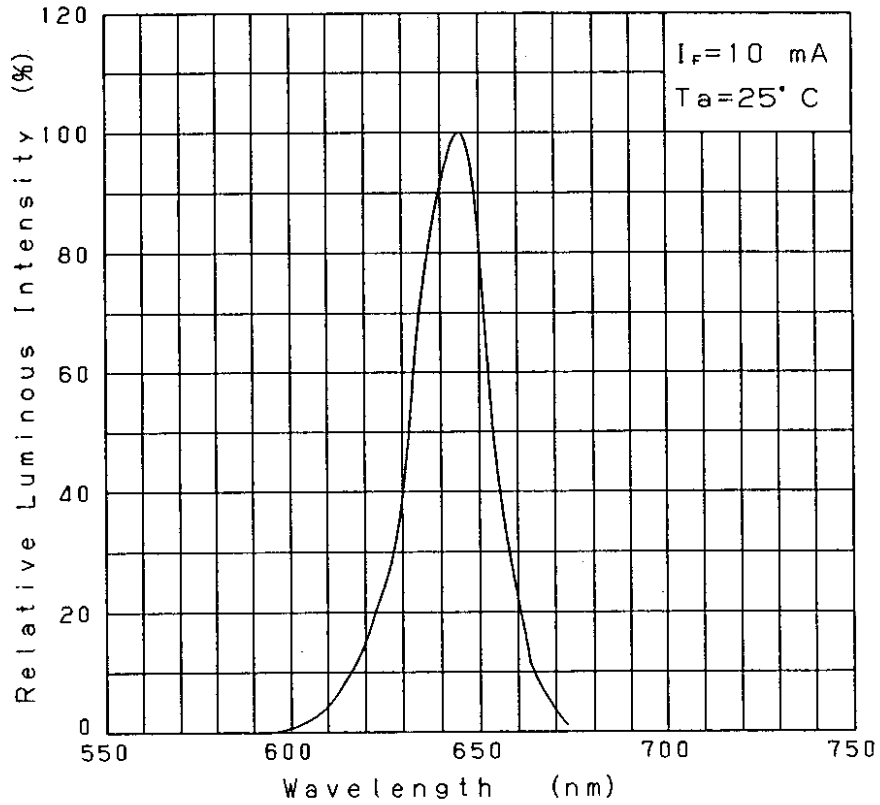
Approved	Checked	Designed
		<i>H. Tabata</i>

DEVELOPMENT SPECIFICATION

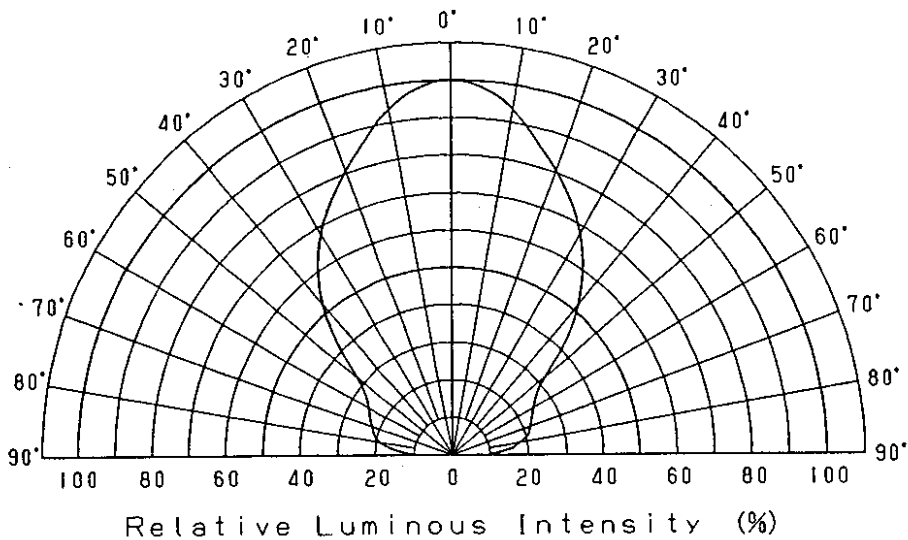
P/N: LNJ218C82RA1

TEMPORARY

Relative Luminous Intensity
Wavelength Characteristics



Directive Characteristics



Nov. 7. 2001