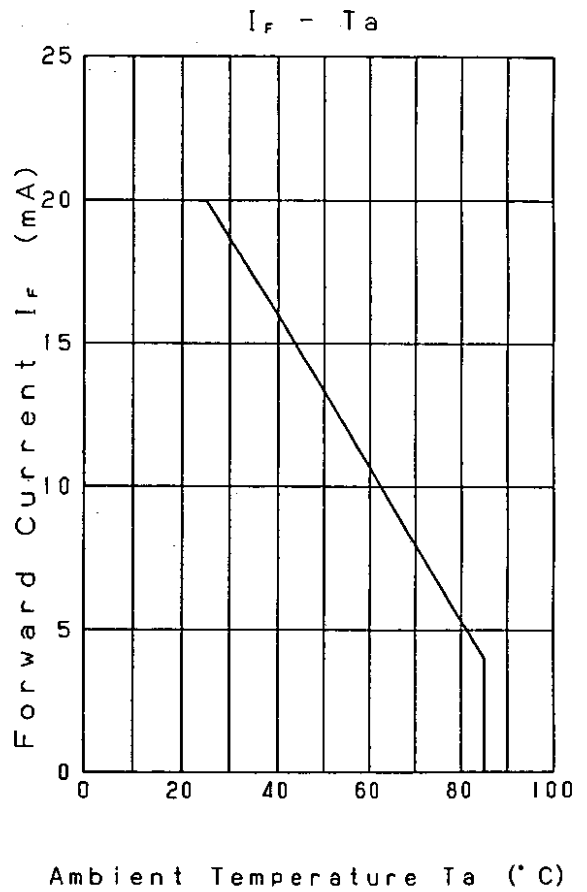
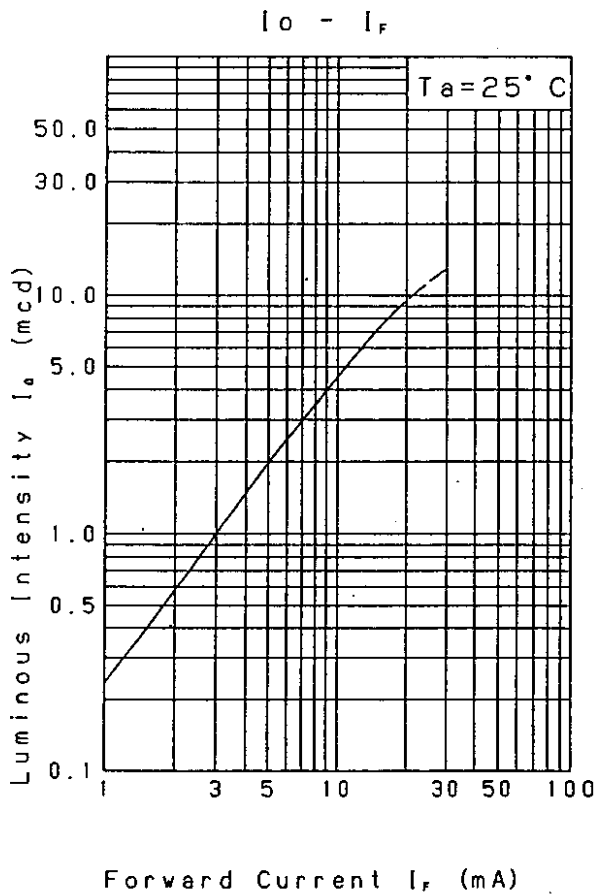
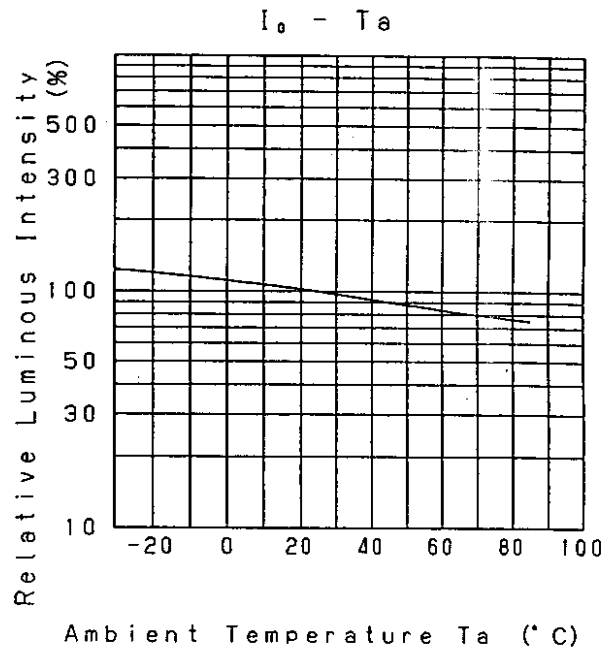
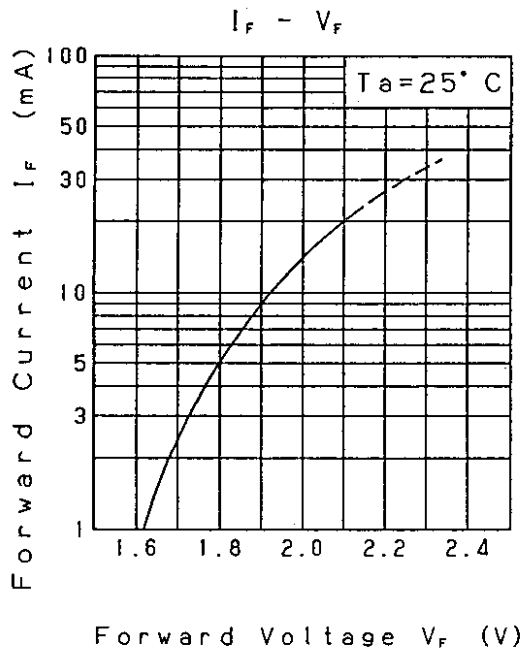


Approved	Checked	Designed	DEVELOPMENT SPECIFICATION					
		T. Tabata	P/N:LNJ818C8DRA1				TEMPORARY	
T Y P E			Orange Light Emitting Diode					
A P P L I C A T I O N			Indicators					
M A T E R I A L			GaAsP					
O U T L I N E			Attached					
A B S O L U T E			P	#1 I _{FP}	I _{FDC}	V _R	Topr	Tstg
M A X I M U M			60	60	20	3	-30~+85	-40~+100
R A T I N G S			mW	mA	mA	V	°C	°C
C O N D I T I O N			Ta=25±3°C					
Test Specification								
I t e m	Symbol	C o n d i t i o n	Typ	Limit		Unit		
				Min	Max			
Forward Voltage	V _F	I _F =10mA	1.93		2.6	V		
Reverse Leakage Current	I _R	V _R = 3V			10	μA		
Luminous Intensity #2	I _O	I _F =10mA DC	4.5	2.1		mcđ		
Peak Emission Wavelength	λ _p	I _F =10mA DC	630			nm		
Spectral Line Half Width	Δλ	I _F =10mA DC	40			nm		
#1 The Condition of I _{FP} is duty 10% , Pulse width 1 ms #2 Tolerance of luminous intensity: ±20%.								
NOTE								
★1. Please contact the Panasonic local office if you design at low current (below 1mA DC) or pulse current operation and have any questions.								
★2. Soldering conditions.....Refer to Handling note.								
★3. Care should be taken that soldering is done within 3-days after opening the dry package and reel.								
★4. Compositions of the lead Cu/Ni/Au plating								
Nov. 7. 2001								

Approved	Checked	Designed	DEVELOPMENT SPECIFICATION	
		<i>T. Takata</i>	P/N:LNJ818C8DRA1	TEMPORARY



Nov. 7. 2001		

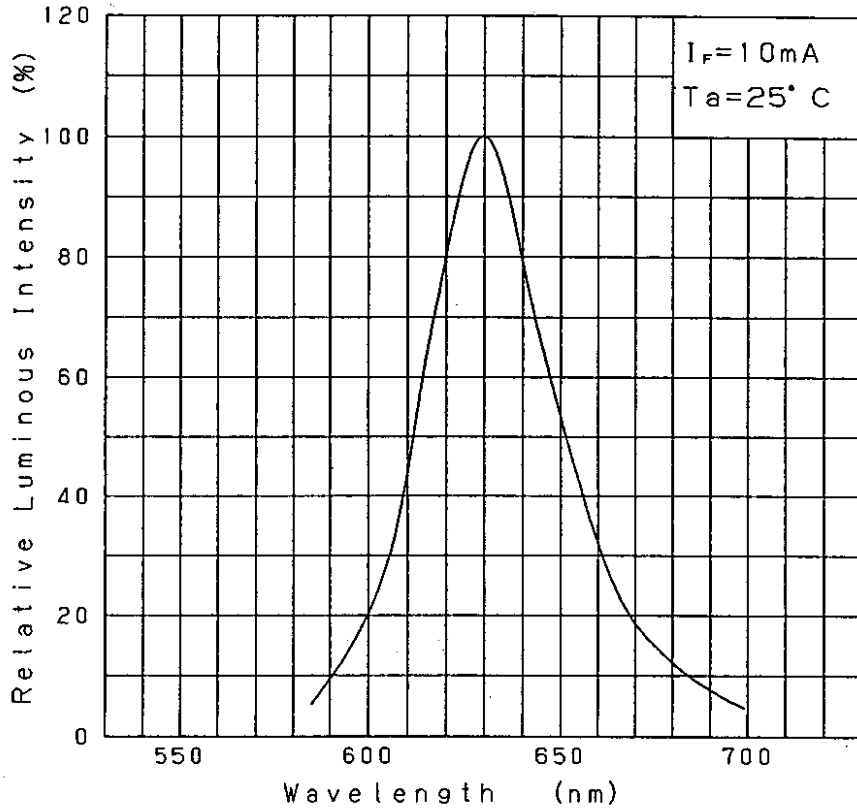
Approved	Checked	Designed
		T. Tabata

DEVELOPMENT SPECIFICATION

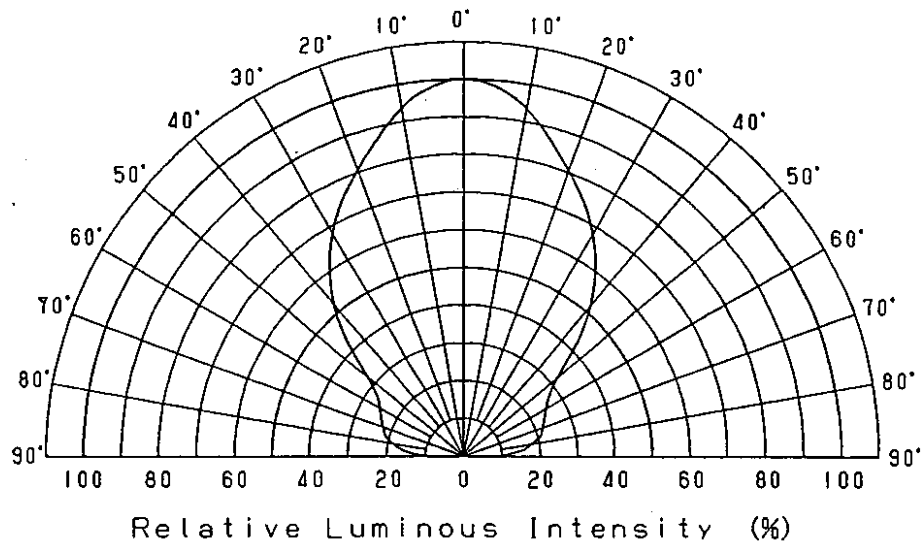
P/N: LNJ818C8DRA1

TEMPORARY

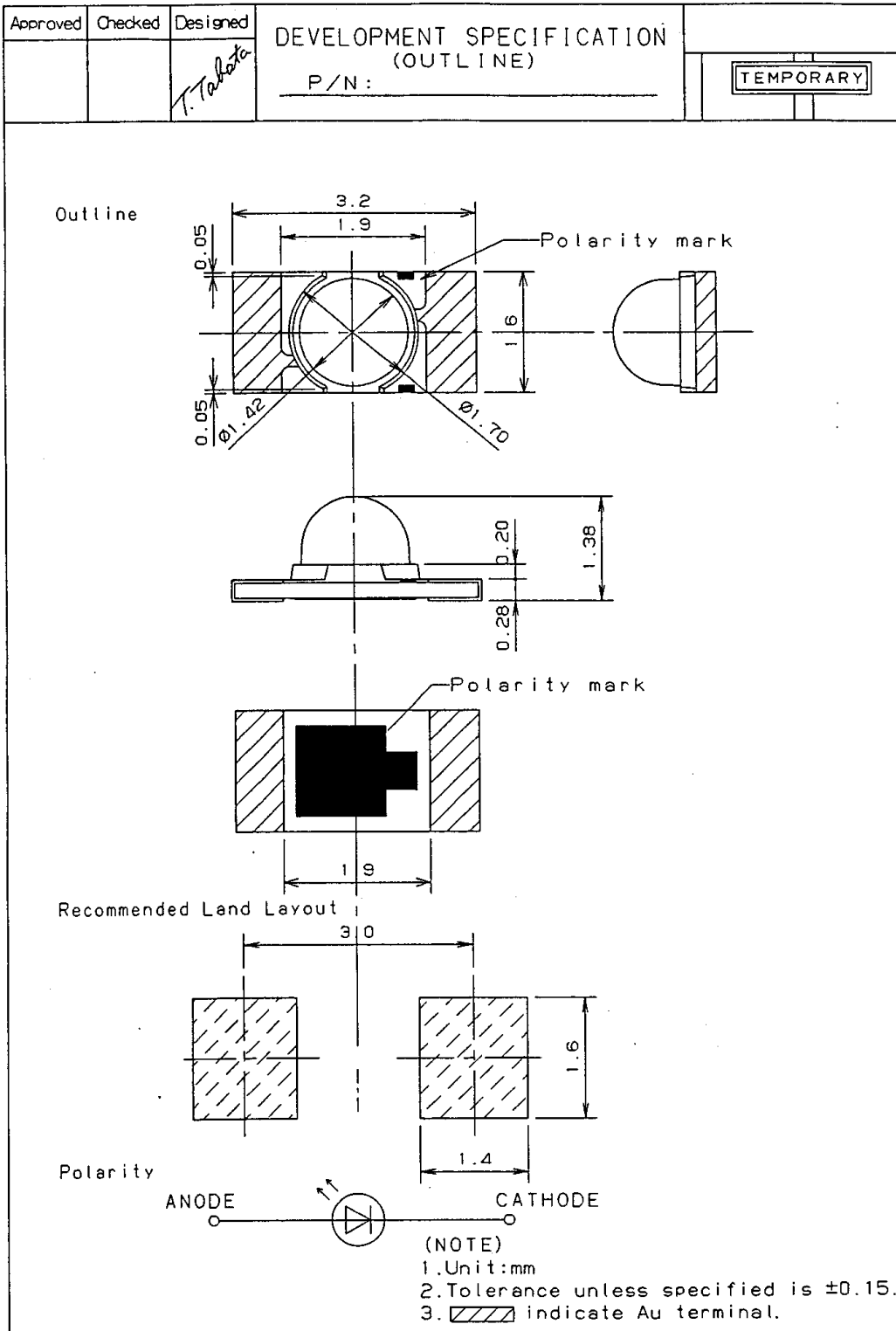
Relative Luminous Intensity
Wavelength Characteristics



Directive Characteristics



Nov. 7. 2001



Nov. 7. 2001			
--------------	--	--	--

Panasonic KAGOSHIMA MATSUSHITA ELECTRONICS CO., LTD. KB-H-022-018B