

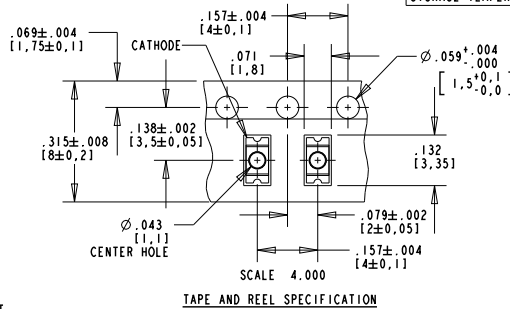
REV.	ECN NO.	REVISIONS	DRN.	CKD.	APP.	DATE
A		NEW RELEASE	MC		HG	4-22-94
B		ADDED NOTES 6 AND 7.	TC		D.C. N.O.	6-9-99
C		ADDED "F" SUFFIX RoHS COMPLIANT P/Ns -402F, -407F, WITH RoHS REFLOW PROFILE	TWC			
D		ADDED DOMINANT WAVELENGTH SPECS, TOLERANCES, TAPE AND REEL SPEC, LED SCHEMATIC AND NOTE 8.	AJF	KLJ	NO	10-11-10

RoHS COMPLIANT 597-3201-40XF
 Part Numbers with the "F" suffix ending are RoHS Compliant.
 For example: 597-3201-402F
 Reel and bag packaging are marked with "RoHS Compliant" label or equivalent markings. These parts can be used with RoHS reflow profile. Parts can be wave soldered, dip soldered or hand soldered using typical lead-free soldering process with max 260°C temp. for 5 sec.

OPERATING CHARACTERISTICS AT 25°C AMBIENT					
LED CHARACTERISTICS	MIN.	TYP.	MAX.	UNITS	TEST CONDITIONS
LUMINOUS INTENSITY	5.0	9.0		mc d	I _r = 20 mA
PEAK WAVELENGTH		605		nm	
DOMINANT WAVELENGTH	597	606	612	nm	
FORWARD VOLTAGE		2.2	2.5	V	I _f = 20 mA
2 X 1/2 - INTENSITY ANGLE		70		DEGREE	

ABSOLUTE MAXIMUM RATINGS AT 25°C AMBIENT		VALUE	UNITS
POWER DISSIPATION		75	mW
PEAK FORWARD CURRENT		70	mA
CONTINUOUS FORWARD CURRENT		30	mA
LINEAR DERATING FROM 25°C		0.42	mA/°C
PEAK REVERSE VOLTAGE (I _r = 100 μA)		4	V
REFLOW SOLDERING PRE-HEAT 120°C TO 150°C, 60-120 SEC. (FOR 5 SEC.)		260	°C
WAVE SOLDERING (FOR 5 SEC.)		260	°C
SOLDER DIP (FOR 5 SEC.)		260	°C
OPERATING TEMPERATURE		-30 TO +85	°C
STORAGE TEMPERATURE		-40 TO +100	°C

- NOTES:
1. DIE: GaAsP/GaP ORANGE.
 2. SOLDER PADS: COPPER BASE, GOLD PLATED.
 3. DIALIGHT PART NUMBERS: 597-3201-40XF.
 4. SUFFIX -402F FOR 20 PCS ON A SAMPLE STRIP.
 5. SUFFIX -407F FOR 7" DIA. REEL, .315" [8mm] WIDE TAPE, PACKAGED 2,500 PCS PER REEL.
 6. DEVICES POSITIONED ON REEL WITH CATHODE SIDE TOWARDS SPROCKET.
 7. TAPE AND REEL LEDS MAY REQUIRE RE-TAPING AFTER 12 MONTHS.
 8. PIN NUMBERS ARE FOR REFERENCE ONLY, DESIGNATION NON-EXISTENT ON PART.



THIS DRAWING AND THE CONTENTS HEREIN ARE CONFIDENTIAL AND THE SOLE PROPERTY OF DIALIGHT. REPRODUCTION OF THIS DRAWING OR CONSTRUCTION OF ANY PARTS WITHIN THIS DRAWING ARE FORBIDDEN WITHOUT THE WRITTEN CONSENT OF DIALIGHT.		
SCALE: 10.000	DRAWING NUMBER	REV
ALL DIM'S IN: INCHES (MM)	C-16213	D
TOLERANCES: UNLESS OTHERWISE SPECIFIED	TITLE	
FRACTIONS: 1/64	ORANGE SURFACE MOUNT LED	
DECIMALS (.XX): ±.02	MATERIAL	
DECIMALS (.XXX): ±.008	Dialight	
ANGLES: ±1°	1501 ROUTE 34 SOUTH FARMINGDALE, NJ 07727	
FINISH:	FSCM	83330
SHEET 1 OF 1 FAMILY TABLE:		