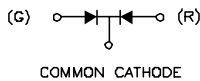
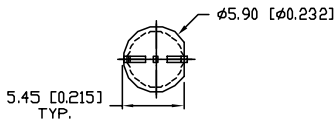
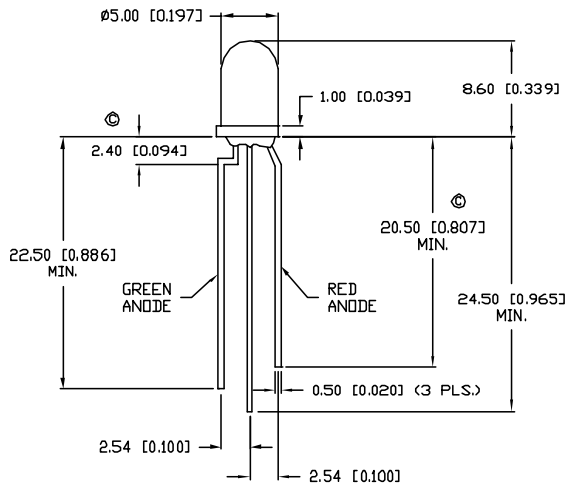


DATE	REVISIONS	REV
8-31-94	UPDATED SAFE OPER. SPECS.	A
4-5-95	CHG'D SPECS.	B
9-7-95	CORRECTED DIMS WHERE NOTED.	C
3-17-98	E.C.N. #10BRDR. & REDRAWN./	D

DRAWING NUMBER SSL-LX5099GIW	REV D
---------------------------------	----------



UNLESS OTHERWISE SPECIFIED TOLERANCE IS $\pm 0.25\text{mm}$ ($\pm 0.010''$)

ELECTRO-OPTICAL CHARACTERISTICS $T_A = 25^\circ\text{C}$ $I_f = 20\text{mA}$

PARAMETER	MIN	TYP	MAX	UNITS	TEST COND
PEAK WAVELENGTH		565 (GREEN)		nm	
		635 (RED)		nm	
FORWARD VOLTAGE (G/R)		2.2/2.0	2.6/2.5	V_f	
REVERSE VOLTAGE	5.0			V_r	$I_f = 100\mu\text{A}$
AXIAL INTENSITY (G/R)		45/55		mcd	$I_f = 20\text{mA}$
VIEWING ANGLE		60		$2x$ theta	
EMITTED COLOR:	GREEN/RED				
EPOXY LENS FINISH:	MILKY WHITE DIFFUSED				

ⓑ LIMITS OF SAFE OPERATION AT 25°C

PARAMETER	COLORS	MAX	UNITS
PEAK FORWARD CURRENT*		150	mA
STEADY CURRENT	(G/R)	25/30	mA
POWER DISSIPATION		105	mW
DERATE FROM 25°C		-1.2	mW/ $^\circ\text{C}$
ⓐ OPERATING, STORAGE TEMP.		-40 TO +85	$^\circ\text{C}$
ⓐ SOLDERING TEMP.		+260	$^\circ\text{C}$
ⓐ 2.0mm FROM BODY			3 SEC. MAX

* $t < 10\mu\text{s}$

RELIABILITY NOTE

OUR MANY YEARS OF EXPERIENCE DATA ACCUMULATION INDICATE THAT SOLDER HEAT IS A MAJOR CAUSE OF EARLY AND FUTURE FAILURE. PLEASE PAY ATTENTION TO YOUR SOLDERING PROCESS.

LUMEX
INCORPORATED

290 E. HELLEN ROAD
PALATINE, ILLINOIS 60067
(847) 359-2790

CONFIDENTIAL INFORMATION
THE INFORMATION CONTAINED IN THIS DOCUMENT IS THE PROPERTY OF LUMEX INCORPORATED. EXCEPT AS SPECIFICALLY AUTHORIZED IN WRITING BY LUMEX INCORPORATED, THE HOLDER OF THIS DOCUMENT SHALL KEEP ALL INFORMATION CONTAINED HEREIN CONFIDENTIAL AND SHALL PROTECT SAME IN WHOLE OR IN PART FROM DISCLOSURE AND DISSEMINATION TO ALL THIRD PARTIES.

DATE: 6-24-92	DWN:	CHK'D:	APPD:
SCALE: N/A			

T-5mm (T-1 3/4) LED, GREEN/RED BICOLOR,
MILKY WHITE DIFFUSED LENS, COMMON CATHODE.

PAGE 1 OF 1	DRAWING NUMBER SSL-LX5099GIW	REV D
-------------	---------------------------------	----------