

DATE	REVISIONS	REV
11-28-94	REDRAWN, UPDATED SPECS./	A
4-23-96	E.C.N. #10152./	B

DRAWING NUMBER	REV
SSL-LX3044LGD-TR	B

ELECTRO-OPTICAL CHARACTERISTICS  $T_A=25^{\circ}\text{C}$   $I_f=20\text{mA}$

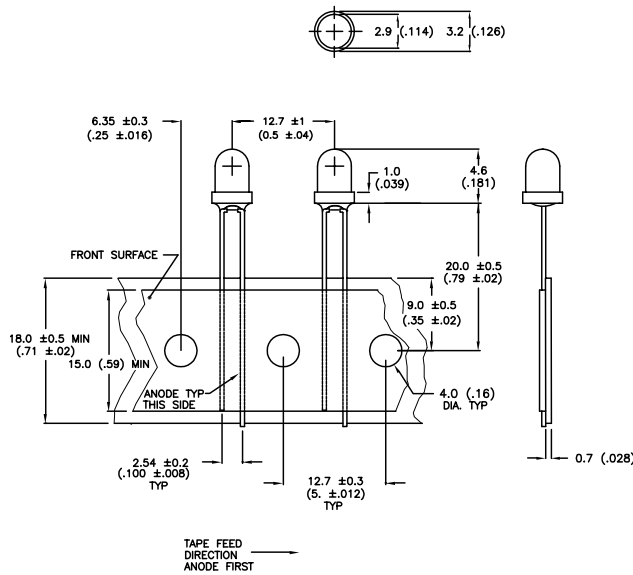
PARAMETER	MIN	TYP	MAX	UNITS	TEST COND
PEAK WAVELENGTH		565 (GREEN)		nm	
FORWARD VOLTAGE		2.1	2.8	$V_f$	
REVERSE VOLTAGE	5.0			$V_r$	$I_f=100\mu\text{A}$
AXIAL INTENSITY	1.5	15		mcd	$I_f=20\text{mA}$
VIEWING ANGLE		80		$2x$ theta	$I_f=2\text{mA}$
EMITTED COLOR		GREEN			
EPOXY LENS FINISH		GREEN DIFFUSED			

Ⓐ LIMITS OF SAFE OPERATION AT  $25^{\circ}\text{C}$

PARAMETER	MAX	UNITS
PEAK FORWARD CURRENT*	150	mA
STEADY CURRENT	25	mA
POWER DISSIPATION	105	mW
DERATE FROM $55^{\circ}\text{C}$	-1.2	$\text{mW}/^{\circ}\text{C}$
OPERATING, STORAGE TEMP	-40 TO +85	$^{\circ}\text{C}$
LEAD SOLDERING TEMP	+260	$^{\circ}\text{C}$
2.0mm FROM BODY	3 SEC. MAX	

\*  $t < 10\mu\text{s}$

**RELIABILITY NOTE**  
 OUR MANY YEARS OF EXPERIENCE DATA ACCUMULATION INDICATE THAT SOLDER HEAT IS A MAJOR CAUSE OF EARLY AND FUTURE FAILURE. PLEASE PAY ATTENTION TO YOUR SOLDERING PROCESS.



		292 E. HELLEN ROAD PALATINE, ILLINOIS 60067 (708) 359-2790	
		<small>CONFIDENTIAL INFORMATION          THE INFORMATION CONTAINED IN THIS DOCUMENT IS THE PROPERTY OF LUMEX OPTO/COMPONENTS, INC. EXCEPT AS SPECIFICALLY AUTHORIZED IN WRITING BY LUMEX OPTO/COMPONENTS, INC., THE HOLDER OF THIS DOCUMENT SHALL KEEP ALL INFORMATION CONTAINED HEREIN CONFIDENTIAL AND SHALL PROTECT SAME IN WHOLE OR IN PART FROM DISCLOSURE AND DISSEMINATION TO ALL THIRD PARTIES.</small>	
DATE: 8-24-93	DWN:	CHK'D:	APPD:
SCALE: N/A			
T-3 (T-1) LED, GREEN DIFFUSED, SPECIAL LOW CURRENT, TAPE AND REEL			
PAGE 1 OF 1	DRAWING NUMBER SSL-LX3044LGD-TR		REV B

04/96