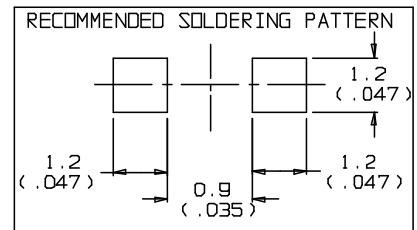
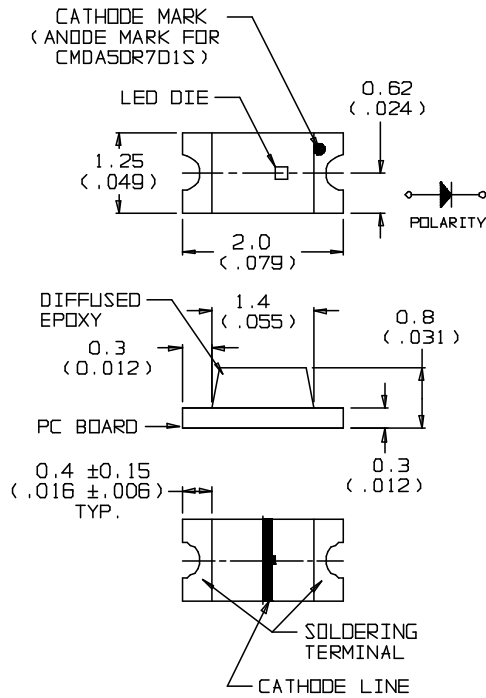


REV	ECR NO./DESCRIPTION	DATE
A	20544 RHW NEW RELEASE	06/06/01
B	20694 RHW REVISED PER VENDOR REQUEST.	07/12/01



- NOTES:
1. ALL DIMENSIONS ARE IN MILLIMETERS (In).
 2. 1 MICRO SECOND @ 10% DUTY CYCLE.


QST.
V/S

- Ⓢ FOR INSPECTION USE ONLY
- ⓧ SPC DOCUMENTATION REQ. (X R CHARTS)

SHEET 1 OF 3

DO NOT SCALE

THIS DWG IS THE PROPERTY
OF CHICAGO MINIATURE LAMP INC.
AND IS PROPRIETARY IN
GENERAL AND IN DETAIL.
IT SHALL NOT BE COPIED
OR ITS CONTENTS REVEALED
TO OUTSIDE PARTIES WITH-
OUT THE WRITTEN CONSENT
OF CHICAGO MINIATURE LAMP INC.


PART NO.:	SEE TABLE	TITLE	SURFACE MOUNT LED		
MODEL NO.:	-	 CHICAGO MINIATURE LAMP INC. 147 CENTRAL AVE. HACKENSACK, NJ 07601			
POLD NO.:	-				
MATERIAL:	-				
FINISH:	-				
TOLERANCE UNLESS OTHERWISE SPECIFIED:		DRAWN	R.H. Wiggins	SCALE:	N.T.S
FRACTION ± 1/64		CHECKED			
INCHES .xx ± .030 (0.76)		ENG. APPRV			
INCHES .xxx ± .015 (0.38)					
ANGLE ± 1 deg.					
				B17176	REV B

*DN 9AD

SHEET 1 OF 3

REV	ECR NO./DESCRIPTION	DATE
	SEE SHEET ONE	

CMDA5 CB7D1S	CMDA5 AG7D1S	CMDA5 DY7D1S	CMDA5 BA7D1S	CMDA5 AR7D1S	CMDA5 AY7D1S	CMDA5 CY7D1S	CMDA5 AA7D1S	CMDA5 BR7D1S	CMDA5 DR7D1S	ELECTRO-OPTICAL CHARACTERISTICS AND RATINGS	UNITS
BLUE	GREEN	AMBER	ORANGE	RED	GREEN	YELLOW	ORANGE	RED	RED	OUTPUT COLOR	
DIFFUSED	DIFFUSED	DIFFUSED	DIFFUSED	DIFFUSED	DIFFUSED	DIFFUSED	DIFFUSED	DIFFUSED	DIFFUSED	DIFFUSION	
CLEAR	CLEAR	CLEAR	CLEAR	CLEAR	CLEAR	CLEAR	CLEAR	CLEAR	CLEAR	PACKAGE COLOR	
20	20	20	20	20	20	20	20	20	20	TEST CURRENT	mA
3.4	3.4	1.9	1.9	1.9	2.2	2.1	2.2	2.1	1.8	FORWARD VOLTAGE TYP	V
3.9	3.9	2.4	2.4	2.4	2.6	2.6	2.6	2.6	2.6	FORWARD VOLTAGE MAX	V
16	40	25	25	25	4.00	2.50	2.50	2.50	6.30	LUMINOUS INTENSITY MIN	mcad
55	145	90	90	90	15.0	8.0	8.0	10.0	17.0	LUMINOUS INTENSITY TYP	mcad
-	-	-	-	-	-	-	-	-	-	LUMINOUS INTENSITY MAX	mcad
469	520	595	609	637	570	589	605	630	660	PEAK WAVELENGTH	nm
140	140	170	170	170	170	170	170	170	170	VIEWING ANGLE 2θ 1/2	degrees
										ABSOLUTE MAXIMUM RATINGS To = 25°C	UNITS
98	98	75	75	75	52	52	52	52	65	POWER DISSIPATION	mW
-30 TO +85	-30 TO +85	-30 TO +85	-30 TO +85	-30 TO +85	-30 TO +85	-30 TO +85	-30 TO +85	-30 TO +85	-30 TO +85	OPERATING TEMPERATURE	°C
-40 TO +85	-40 TO +85	-40 TO +85	-40 TO +85	-40 TO +85	-40 TO +85	-40 TO +85	-40 TO +85	-40 TO +85	-40 TO +85	STORAGE TEMPERATURE	°C
50	100	100	100	100	100	100	100	100	100	PEAK FORWARD CURRENT MAX. (SEE NOTE 2)	mA
5	5	5	5	5	5	5	5	5	5	REVERSE VOLTAGE (IR = 100 mA)	V
10	10	10	10	10	10	10	10	10	10	LEAD SOLDER TIME AT 230° C	SECONDS

<input type="checkbox"/> FOR INSPECTION USE ONLY	DRST.
<input checked="" type="checkbox"/> SPC DOCUMENTATION REQ. (X R CHARTS)	SHEET 2 OF 3
PART NO. SEE TABLE	TITLE
MODEL NO. -	SURFACE MOUNT LED
POLD NO. -	 CHICAGO MINIATURE LAMP INC. 147 CENTRAL AVE. HACKENSACK, NJ 07601
MATERIAL: -	
FINISH: -	DRAWN R.H. Wiggins
TOLERANCE UNLESS OTHERWISE SPECIFIED:	SCALE: N.T.S
FRACTION ± 1/64	CHECKED
INCHES .xx ±.030 (0.76)	ENG. APPROV
ANGLE .xxx ±.015 (0.38)	B17176
± 1 deg.	REV B

DO NOT SCALE

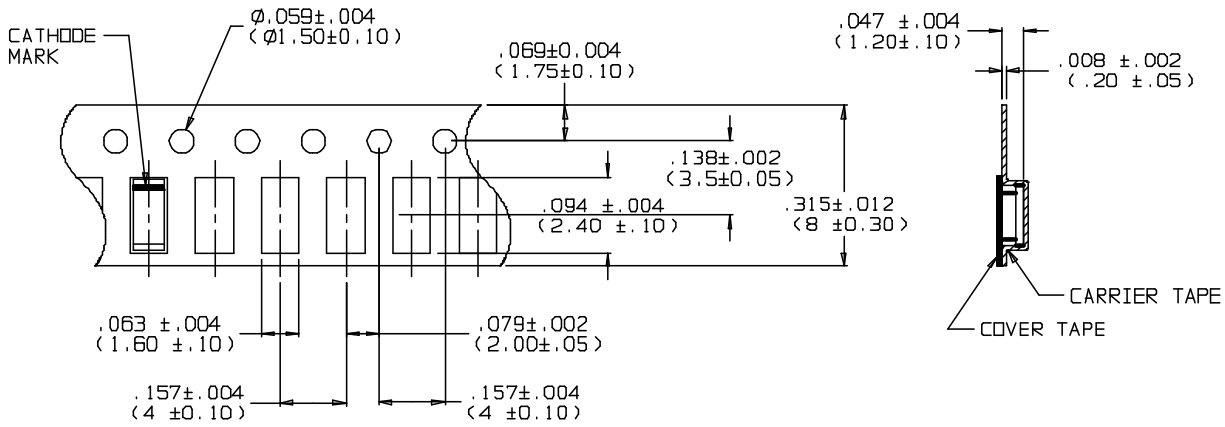
THIS DRAWING IS THE PROPERTY OF CHICAGO MINIATURE LAMP INC. AND IS PROPRIETARY IN GENERAL AND IN DETAIL. IT SHALL NOT BE COPIED OR ITS CONTENTS REVEALED TO OUTSIDE PARTIES WITHOUT THE WRITTEN CONSENT OF CHICAGO MINIATURE LAMP INC.

DN 9AD

SHEET 2 OF 3

REV	ECR NO./DESCRIPTION	DATE
	SEE SHEET ONE	

PROGRESSIVE DIRECTION
→



- NOTES:
 1. ALL DIMENSIONS ARE IN INCHES(mm).
 2. PACKAGING: 4000 PCS/REEL, REEL ϕ 180mm


DO NOT SCALE

THIS ONG IS THE PROPERTY OF CHICAGO MINIATURE LAMP INC. AND IS PROPRIETARY IN GENERAL AND IN DETAIL. IT SHALL NOT BE COPIED OR ITS CONTENTS REVEALED TO OUTSIDE PARTIES WITHOUT THE WRITTEN CONSENT OF CHICAGO MINIATURE LAMP INC.

- FOR INSPECTION USE ONLY
- SPC DOCUMENTATION REQ. (X R CHARTS)

Q151
V/S

SHEET 3 OF 3

PART NO.:	SEE TABLE	TITLE:	SURFACE MOUNT LED		
MODEL NO.:	-	 CHICAGO MINIATURE LAMP INC. 147 CENTRAL AVE. HACKENSACK, NJ 07601			
POLD NO.:	-				
MATERIAL:	-				
FINISH:	-				
TOLERANCE UNLESS OTHERWISE SPECIFIED:		DRAWN:	R.H. Wiggins	SCALE:	NTS
FRACTION	$\pm 1/64$	CHECKED:		B17176	REV B
INCHES	.xx $\pm .030$ (0.76)	ENG. APPROV:			
ANGLE	.xxx $\pm .015$ (0.38)				
	± 1 deg.				

DN 9AD

SHEET 3 OF 3