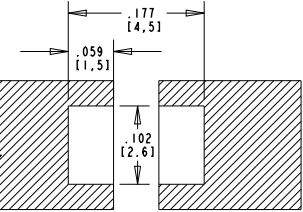
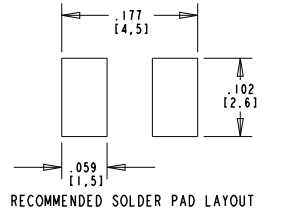
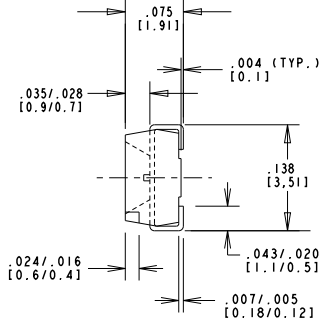
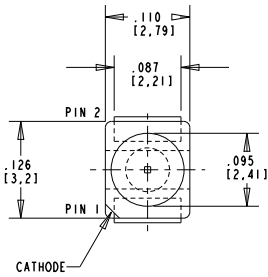
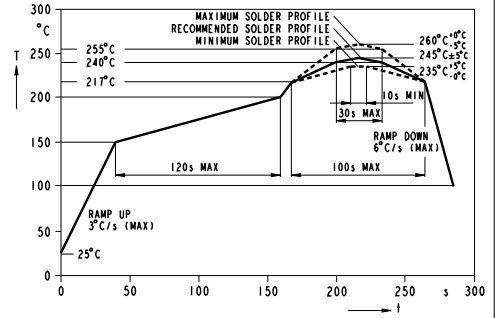


RoHS COMPLIANT 597-3901-207F
 Part Numbers with the "F" suffix ending are RoHS Compliant.
 For example: 597-3901-207F
 Reel and bag packaging are marked with "RoHS Compliant"
 label or equivalent markings. These parts can be used with
 RoHS reflow profile. Parts can be wave soldered, dip soldered
 or hand soldered using typical lead-free soldering process
 with max 260°C temp. for 5 sec.



| REV | ECN NO | REVISIONS | DRN | CKD | APP | DATE |
|-----|--------|---|-----|-----|-----|---------|
| A | | NEW RELEASE | DC | AM | NO | 1-28-02 |
| B | | REMOVED NOTE 3; NEW SOLDERING PROFILE; REMOVED SOLDERING PROFILE FROM TABLE; ADDED "F" TO P/Ns; ADDED RoHS COMPLIANT NOTE; ADDED LED SCHEMATIC | AJF | KLJ | CJC | 9-4-09 |



| OPERATING CHARACTERISTICS AT 25°C AMBIENT | | | | | |
|---|------|------|-------|---------|-----------------|
| LED CHARACTERISTICS | MIN. | TYP. | MAX. | UNITS | TEST CONDITIONS |
| LUMINOUS INTENSITY | 90.0 | | 180.0 | mc d | If = 20 mA |
| FORWARD VOLTAGE | | 3.5 | 4.2 | V | If = 20 mA |
| REVERSE CURRENT | | 0.01 | 10 | µA | Vr = 5 V |
| VIEWING ANGLE (2 θ 1/2) | | 120 | | DEGREES | |
| COLOR COORDINATES | X | 0.29 | 0.32 | 0.365 | If = 20 mA |
| | Y | 0.22 | 0.31 | 0.42 | |

| ABSOLUTE MAXIMUM RATINGS AT 25°C AMBIENT | | |
|--|-------------|-------|
| | | UNITS |
| POWER DISSIPATION | 85 | mW |
| CONTINUOUS FORWARD CURRENT | 20 | mA |
| DERATE LINEARLY FROM 75°C | 0.6 | mA/°C |
| PEAK REVERSE VOLTAGE | 5 | V |
| OPERATING TEMPERATURE | -40 TO +100 | °C |
| STORAGE TEMPERATURE | -40 TO +100 | °C |

NOTES:

- EPOXY COLOR: DIFFUSED
- DIE: InGaN.
- SOLDER ADHERENCE: BOTH LEADS PER MIL-STD-202E, METHOD 208C.
- SUFFIX -207F FOR 20-PCS ON A SAMPLE TAPE STRIP.
SUFFIX -207F FOR 7" (178mm) DIA. REEL. 315 (8mm) EMBOSSED CARRIER TAPE, WITH 2000 PARTS/REEL.
- PARTS TO BE TAPED AND REELED PER EIA-181A.
- PARTS TO BE SUPPLIED 2000 DEVICES PER REEL WITH ALL PARTS ON ONE REEL FROM SAME LOT AND SAME BIN CATEGORY.
- LABELING: REELS TO BE IDENTIFIED WITH P/N, QUANTITY, DATE CODE, INTENSITY BIN CATEGORY AND COLOR BIN CATEGORY.
- PACKAGING IN SEALED ALUMINUM MOISTURE BARRIER BAG WITH DESICCANT AND "MOISTURE SENSITIVITY LEVEL OF "2" PER JEDEC J-STD-033.
- ATTENTION: OBSERVE PRECAUTIONS FOR HANDLING ELECTROSTATIC SENSITIVE DEVICES.
- DEVICES POSITIONED ON REEL WITH CATHODE SIDE TOWARDS SPROCKET.
- TAPE AND REEL LEDS MAY REQUIRE RE-TAPING AFTER TWELVE MONTHS.
- DIALIGHT P/N: 597-3901-202F, 597-3901-207F.

THIS DRAWING AND THE CONTENTS HEREIN ARE CONFIDENTIAL AND THE SOLE PROPERTY OF DIALIGHT. REPRODUCTION OF THIS DRAWING OR CONSTRUCTION OF ANY PARTS WITHIN THIS DRAWING ARE FORBIDDEN WITHOUT THE WRITTEN CONSENT OF DIALIGHT.

SCALE: 8:000

| | | |
|--|----------------|--------------------|
| ALL DIM'S IN: INCHES (MM) | DRAWING NUMBER | REV |
| TOLERANCES: UNLESS OTHERWISE SPECIFIED | C-16903 | B |
| FRACTIONS: ±1/64 | TITLE | WHITE PLCC SMT LED |
| DECIMALS (.XX): ±.01 | | RoHS COMPLIANT |
| DECIMALS (.XXX): ±.008 | MATERIAL | |
| DECIMALS (.XXXX): ±.0005 | | |
| ANGLES: ±1° | | |
| FINISH: | | |
| FSCM | 83330 | |

Dialight 1501 ROUTE 34 SOUTH FARMINGDALE, NJ 07727

SHEET 1 OF 1 FAMILY TABLE: