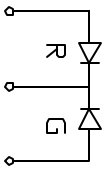
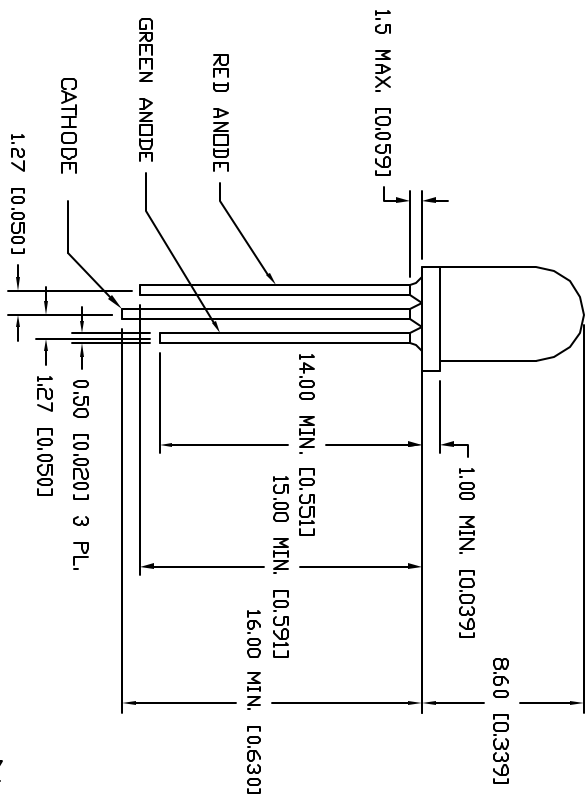
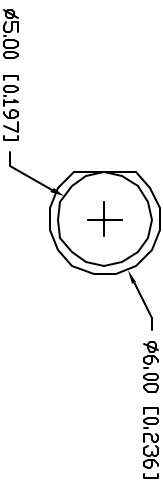


DATE	REVISIONS	REV
------	-----------	-----

DRAWING NUMBER  
SSL-LX50971GW

REV



ELECTRO-OPTICAL CHARACTERISTICS  $T_A = 25^\circ\text{C}$   $I_f = 20\text{mA}$

PARAMETER	MIN	TYPE	MAX	UNITS	TEST COND
PEAK WAVELENGTH	585 (GREEN)		635 (RED)	nm	
FORWARD VOLTAGE (R/G)	2.1		2.8	V <sub>f</sub>	I <sub>r</sub> = 100 $\mu\text{A}$
REVERSE VOLTAGE	5.0			V <sub>r</sub>	I <sub>f</sub> = 20 mA
AXIAL INTENSITY (R/G)	20			med	
VIEWING ANGLE	60			2x theta	
EMITTED COLOR	RED/GREEN				
EPOXY LENS FINISH	MILKY WHITE DIFFUSED				

LIMITS OF SAFE OPERATION AT 25°C

PARAMETER	MAX	UNITS
PEAK FORWARD CURRENT*(R/G)	160	mA
STEADY CURRENT (R/G)	30/25	mA
POWER DISSIPATION(R/G)	100	mW
DERATE FROM 25°C	-1.2	mW/°C
OPERATING, STORAGE TEMP	-40 TD +85	°C
LEAD SOLDERING TEMP	+260	°C
2.0mm FROM BODY	3 SEC. MAX	

\* t<10 $\mu\text{s}$

RELIABILITY NOTE  
OUR MANY YEARS OF EXPERIENCE DATA ACCUMULATION INDICATE THAT SOLDER HEAT IS A MAJOR CAUSE OF EARLY AND FUTURE FAILURE. PLEASE PAY ATTENTION TO YOUR SOLDERING PROCESS.



292 E. HELLEN ROAD  
PALATINE, ILLINOIS 60067  
(708) 359-2790

CONFIDENTIAL INFORMATION  
THE INFORMATION CONTAINED IN THIS DOCUMENT IS THE PROPERTY OF LUMEX OPTO COMPONENTS, INC. EXCEPT AS SPECIFICALLY AUTHORIZED IN WRITING BY LUMEX OPTO COMPONENTS, INC. THE HOLDER OF THIS DOCUMENT SHALL KEEP ALL INFORMATION CONTAINED HEREIN CONFIDENTIAL AND SHALL PROTECT SAME IN WHOLE OR IN PART FROM DISCLOSURE AND DISSEMINATION TO ALL THIRD PARTIES.

DATE:	4-28-96	DWN:		CHK'D:		APP'D:	
SCALE:	N/A						

T-5 (T-1 3/4) LED, BICOLOR RED/GREEN, MILKY WHITE DIFFUSED, .05 LEAD CENTERS, COMMON CATHODE

PAGE	1 OF 1	DRAWING NUMBER	SSL-LX50971GW	REV
------	--------	----------------	---------------	-----