

Approved	Checked	Designed	DEVELOPMENT SPECIFICATION	TEMPORARY		
		T. Taketa				

T Y P E	Red Light Emitting Diode					
A P P L I C A T I O N	Indicators					
M A T E R I A L	InGaAlP					
O U T L I N E	Attached					
A B S O L U T E M A X I M U M R A T I N G S	P	*1 I <sub>FP</sub>	I <sub>FDC</sub>	V <sub>R</sub>	Topr	Tstg
	55	60	20	4	-30~+85	-40~+100
	mW	mA	mA	V	°C	°C
C O N D I T I O N	Ta = 25 ± 3°C					

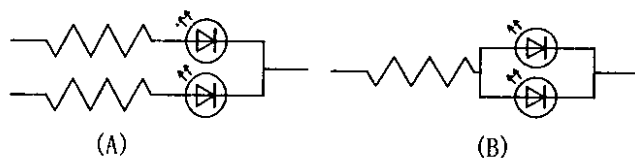
Test Specification

I t e m	Symbol	C o n d i t i o n	Typ	Limit		Unit
				Min	Max	
Forward Voltage	V <sub>F</sub>	I <sub>F</sub> = 10 mA	1.92		2.5	V
Reverse Leakage Current	I <sub>R</sub>	V <sub>R</sub> = 4 V			100	μA
Luminous Intensity *2	I <sub>O</sub>	I <sub>F</sub> = 10 mA DC	75	40		mcad
Peak Emission Wavelength	λ <sub>p</sub>	I <sub>F</sub> = 10 mA DC	645			nm
Spectral Line Half Width	Δλ	I <sub>F</sub> = 10 mA DC	22			nm

- \*1. The Condition of I<sub>FP</sub> is duty 10 %, Pulse width 1 ms
- \*2. Tolerance of luminous intensity : ±20%.

NOTE

- ★1. Please contact the Panasonic local office if you design at low current (below 1mA DC) or pulse current operation and have any questions.
- ★2. Soldering conditions...Refer to Handling note.
- ★3. Compositions of the lead ... Cu/Ni/Au plating
- ★4. Package...Clear type.
- ★5. Beware of destruction by static electricity in handling the LED.
- ★6. Circuit to operate LED.



(A) Recommended circuit.  
 (B) The difference of brightness between the LED could be found due to the V<sub>F</sub> characteristics of each LED.

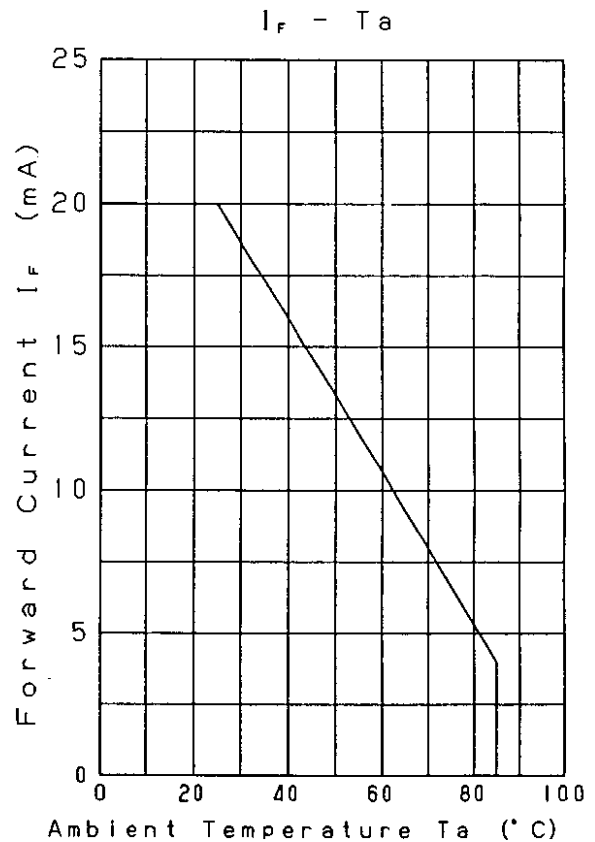
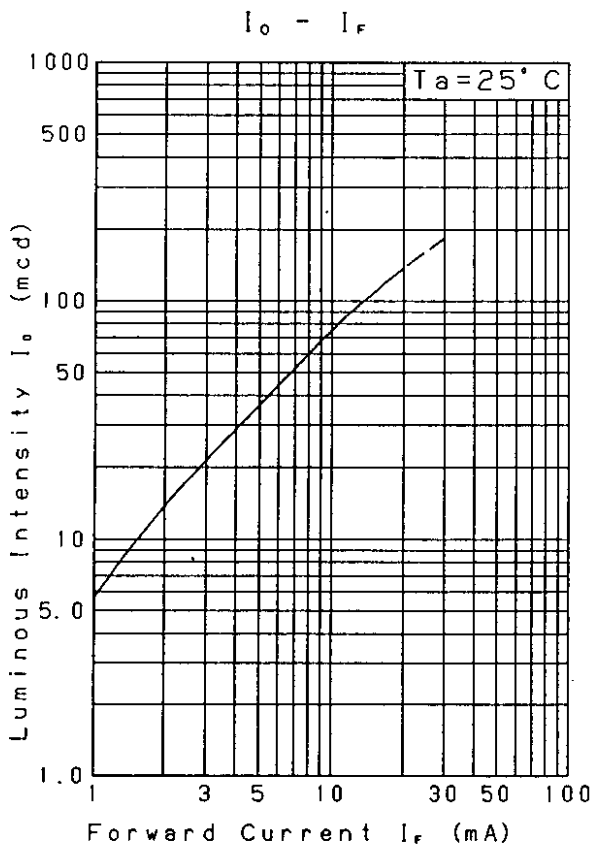
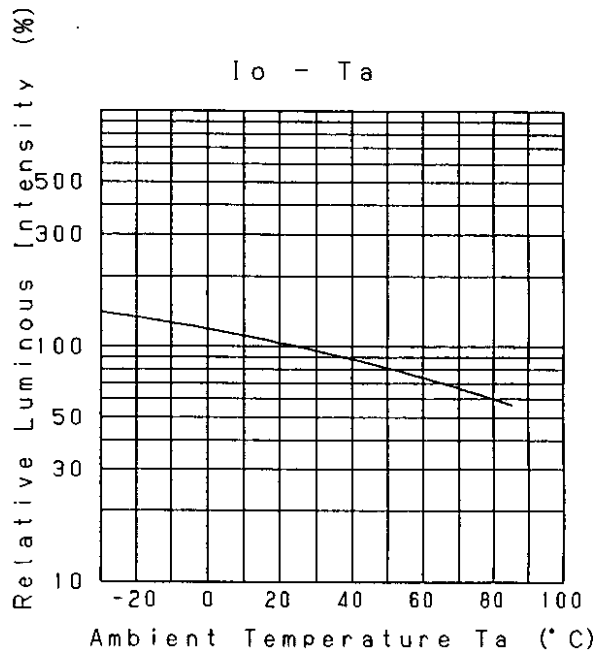
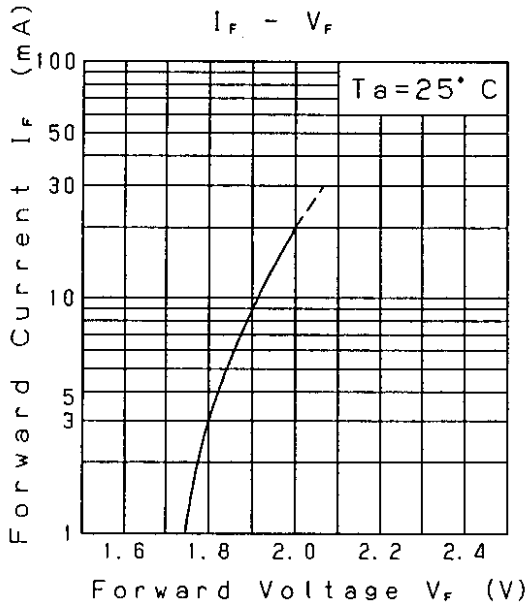
Nov. 7. 2001

Approved	Checked	Designed
		T. Takata

DEVELOPMENT SPECIFICATION

P/N: LNJ218C82RA

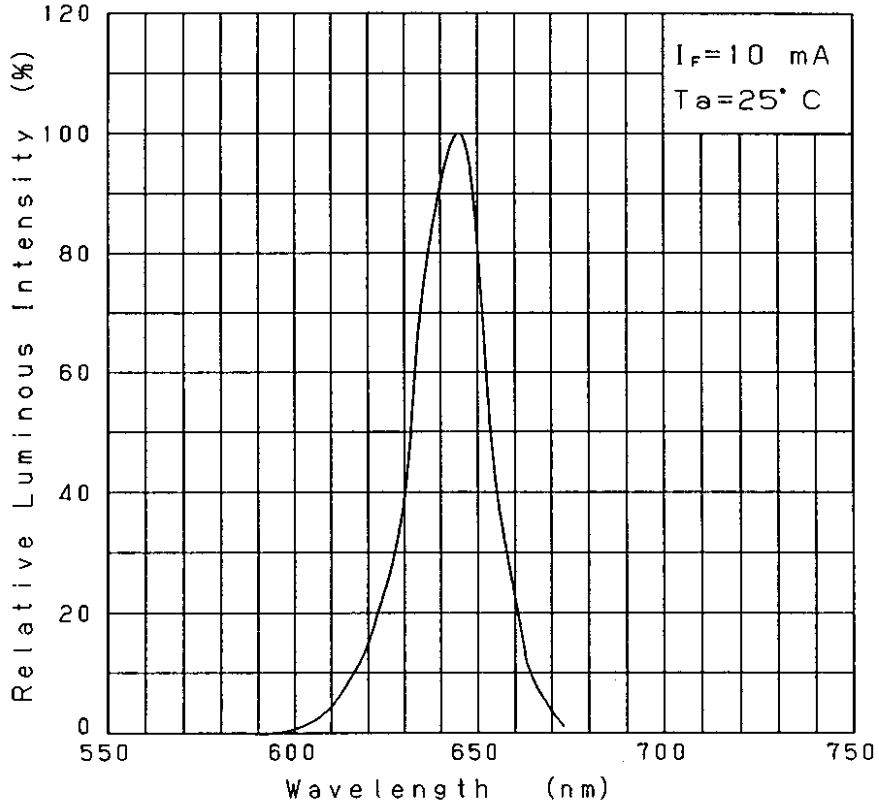
TEMPORARY



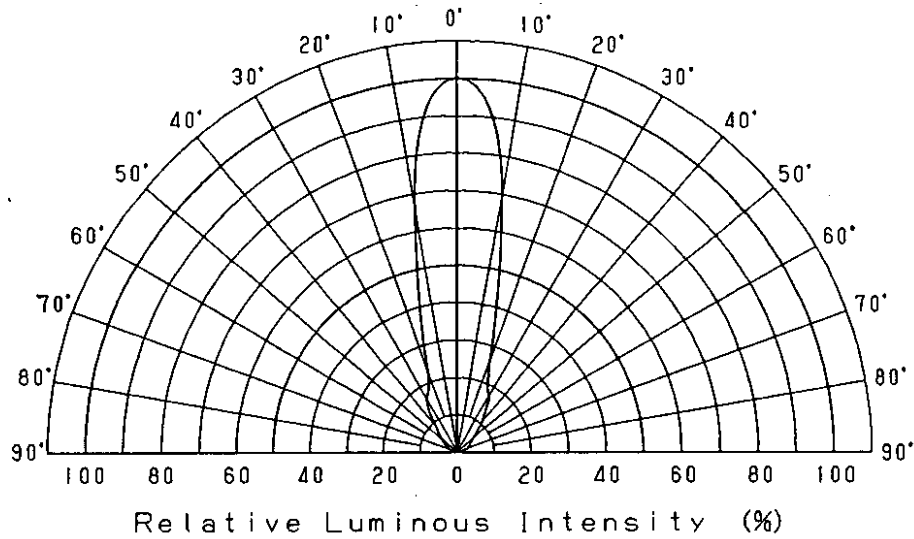
Nov. 7. 2001

Approved	Checked	Designed	DEVELOPMENT SPECIFICATION	TEMPORARY
		T. Tabeta		

Relative Luminous Intensity  
Wavelength Characteristics

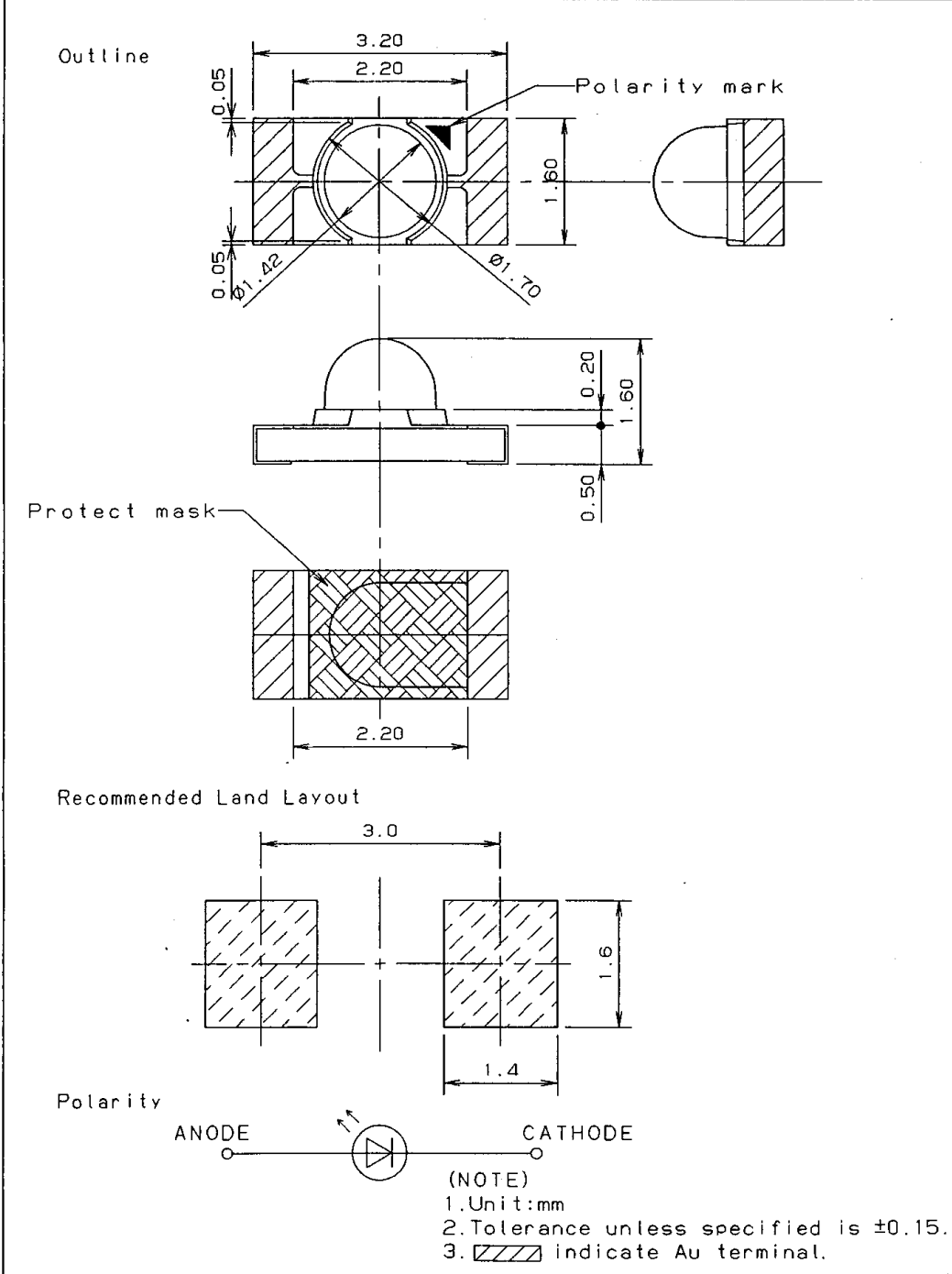


Directive Characteristics



Nov. 7. 2001		

Approved <i>T. S. H. K.</i>	Checked <i>n. h. k.</i>	Designed <i>T. Tabata</i>	DEVELOPMENT SPECIFICATION (OUTLINE) P/N: _____	TEMPORARY



Jul. 5.2001			
-------------	--	--	--

Panasonic KAGOSHIMA MATSUSHITA ELECTRONICS CO., LTD. KB-H-022-018B