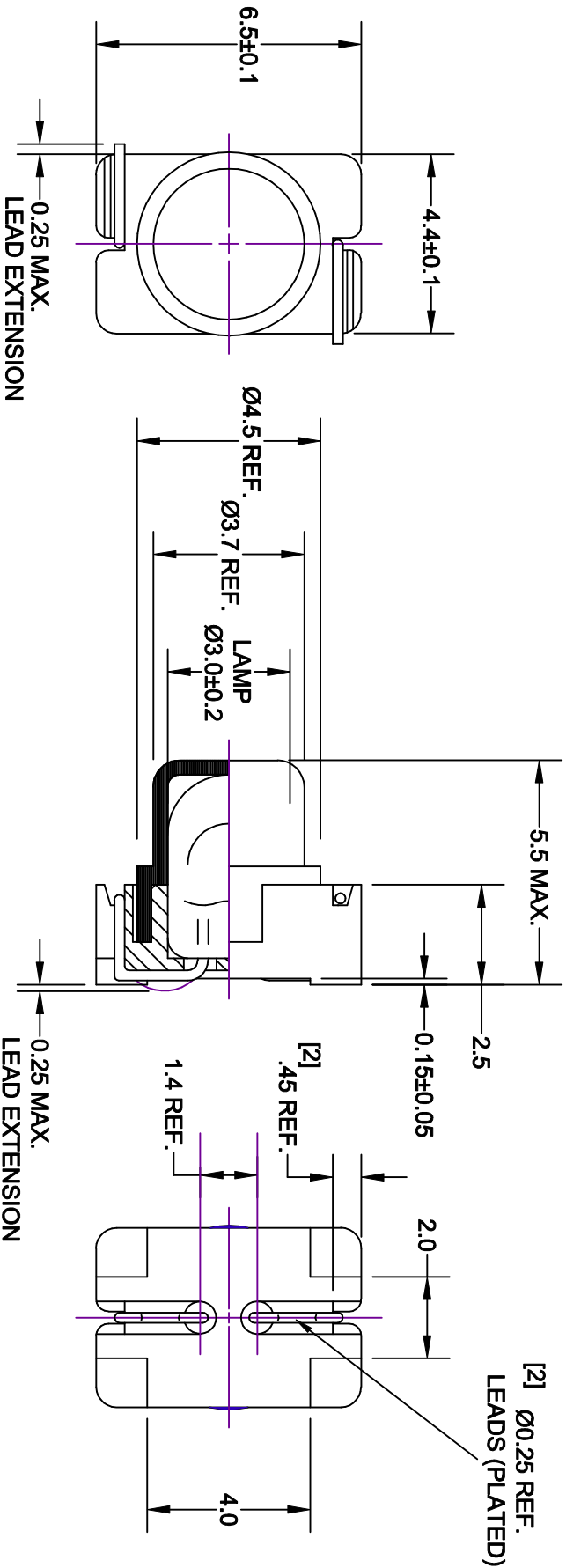
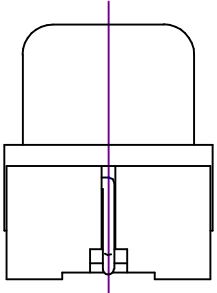


RECOMMENDED DIMENSIONS
FOR PC-BOARD PAD

REV.	DESCRIPTION/ECO NO.	DATE
	RELEASED - was P-9911-14-2 and	11/23/99
	FILTER 39-26-150	
A	CHANGE LEAD CUTAWAY PROFILE	11/29/99
B	ADD NOTE & DIM CHNGS.	1/25/00
C	DELETE NOTE	11/28/00



LAMP NUMBER: 7152					
VOLTS RATED	AMPS ± 10%	*MSCP ± 25%	*LUMENS ± 25%	AVERAGE LIFE HRS. ± 25%	FILAMENT TYPE
5.0	.115	.150	1.89	20,000**	C-2R

*LAMP RATING ONLY WITHOUT BASE AND FILTER

**DERIVED FROM
ACCELERATED TESTING

FILTER NUMBER: 39-26-1A	
COLOR REF.	COORDINATES
RED	X = 0.6920 ± .025
PONTIAC	Y = 0.3036 ± .025

JKL PART NUMBER: CSD4-7152/39-26-1A

 METRIC DIMENSIONS ARE IN MILLIMETERS TOLERANCE UNLESS OTHERWISE SPECIFIED 1 PL +/- 0.2 2 PL +/- 0.20 ANGLE +/- 0		JKL COMPONENTS CORPORATION TITLE: T-1 SURFACE MOUNT LAMP WITH BASE AND FILTER (LOW PROFILE)	
DRAWN BY: L. WENGSTROM APP'D BY: JK DATE: 11/28/00	SIZE: A FSCH NO.: 55335 DRAWING NO.: CSD4-7152/39-26-1A	SCALE: NONE RELEASED DATE: 11/29/99 REVISION DATE: 11/28/00	SHEET: 1 OF 1 REV: C
- CAD DRAWING - MANUAL REVISIONS NOT PERMITTED			