

Power Supplies

DC to AC Inverters

For 2 Bulb, 7W Diming

CXA Series CXA-P1212-VJL

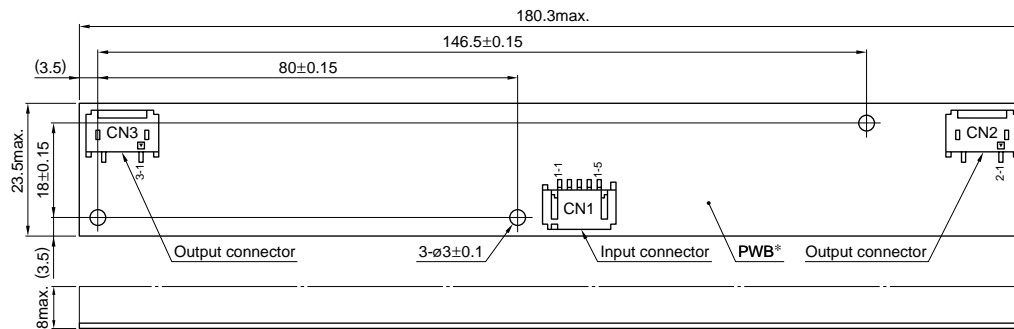
FEATURES

- The CXA-P1212-VJL is an inverter for 2-cold cathode fluorescent lamps and features a built-in dimmer.
- Because they employ advanced output current control, fluctuations in input voltage, load, and distributed capacitance have virtually no effect on brightness.
- Output open and short circuit conditions result in no damage, heat generation, or other difficulties.
- Built-in fuse assures a high degree of safety.
- The bottom of the board has a flat structure that facilitates insulation.
- Ideal for 10- to 14-inch class LCD panels.

TEMPERATURE AND HUMIDITY RANGES

Temperature range	Operating	0 to +70°C
	Storage	-30 to +85°C
Humidity range	95(%RH max.	
	[Maximum wet-bulb temperature 38°C]	

SHAPES AND DIMENSIONS



*Substrate (PWB: Printed wiring board): Inflammable material UL94V-0 t=1mm

Weight: 21g typ.

Dimensions in mm

Terminal No.	Connector manufacturer and type name	No. of connector pin
CN1	Japan Solderless Terminal Co., Ltd. S5B-PH-SM3	5
CN2	Japan Solderless Terminal Co., Ltd. SM02(8.0)B-BHS-1	3
CN3	Japan Solderless Terminal Co., Ltd. SM02(8.0)B-BHS-1	3

TERMINAL NUMBERS AND FUNCTIONS

CN1

Terminal No.	Functions
CN1-1	+Vin
CN1-2	-Vin(GND)
CN1-3	Vbr (Brightness dimmer voltage)
CN1-4	NC (Used in the internal circuits, does not use)
CN1-5	Vrmt (remote operation voltage: DC. 4.75 to 5.25V)

CN2

Terminal No.	Functions
CN2-1	lout1
CN2-2	NC
CN2-3	lout-return

CN3

Terminal No.	Functions
CN3-1	lout2
CN3-2	NC
CN3-3	lout-return

△ Specifications which provide more details for the proper and safe use of the described product are available upon request.
All specifications are subject to change without notice.



Power Supplies

DC to AC Inverters

For 2 Bulb, 7W Dimming

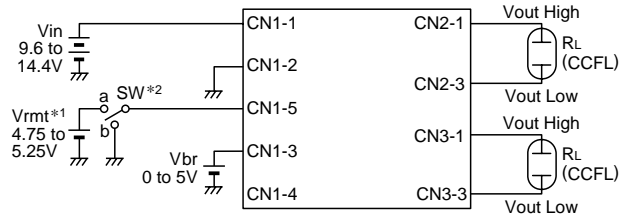
CXA Series CXA-P1212-VJL

ELECTRICAL CHARACTERISTICS

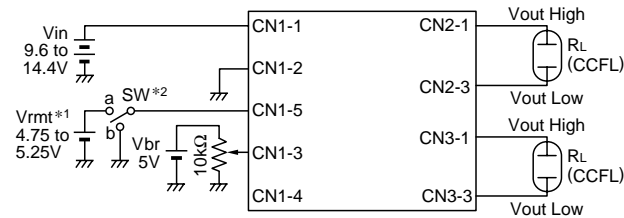
Items	Specifications			Conditions				Brightness		
	min.	typ.	max.	Vin(V)	Vbright(V)	Ta(°C)	RL(kΩ)			
Output current	Irms(mA)	Iout1	5.3	6	6.7	12±2.4	0	0 to +70	76 to 114	Maximum
		Iout2	5.3	6	6.7	12±2.4	0	0 to +70	76 to 114	Maximum
	Ildc(A)	Iout1	5.5	6	6.5	12±1.2	0	0 to +70	95	Maximum
		Iout2	5.5	6	6.5	12±1.2	0	0 to +70	95	Maximum
		Iout1	1.7	2	2.4	12±1.2	3.4	0 to +70	250	Minimum
		Iout2	1.7	2	2.4	12±1.2	3.4	0 to +70	250	Minimum
Input current	Iin	—	0.76	1.3	12±2.4	0 to 3.4	0 to +70	76 to 114		
Oscillation frequency	f	52	58	64	12±2.4	0	0 to +70	95		
Open circuit output voltage	Vopen	1400	1500	2000	12±2.4	0	0 to +70	∞		

TYPICAL CONNECTIONS

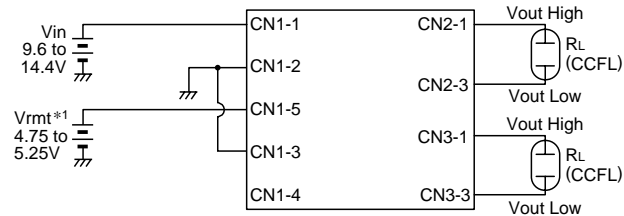
EXAMPLE OF VOLTAGE DIMMER CONTROL



EXAMPLE OF POTENTIOMETER DIMMER CONTROL



NO DIMMER CONTROL

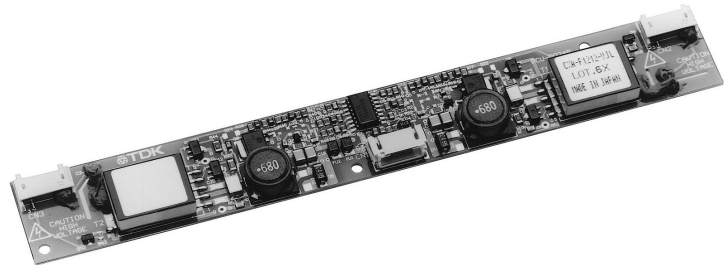
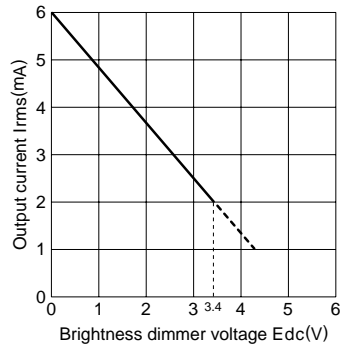


*1 Vbrmt (remote voltage) shall be ON after Vin was ON.

*2 SW a: ON, b: OFF

TYPICAL ELECTRICAL CHARACTERISTICS

OUTPUT CURRENT vs. BRIGHTNESS DIMMER VOLTAGE



A442_CXAP1212
980911

Specifications which provide more details for the proper and safe use of the described product are available upon request.
All specifications are subject to change without notice.

