

DC to AC Inverters

Conformity to RoHS Directive

Connector type, Dimming, 9W, for 2 Bulbs

CXA Series CXA-P1612-VJL

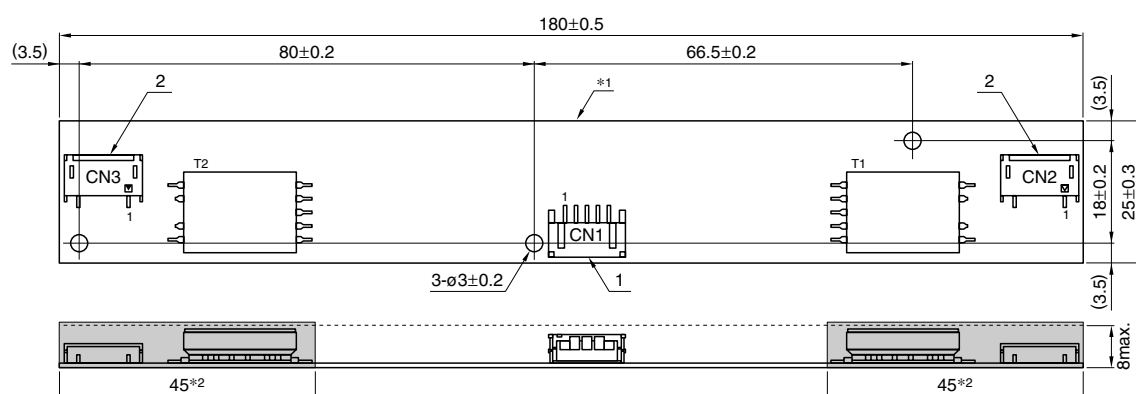
FEATURES

- For 2 bulbs.
- Applicable panel size* : 10 to 15-inch
- With brightness control function (Pulse Wide Modulation mode).
- The high-voltage terminals are coated with silicone so as to avoid the defects caused by dust.
- It is a product conforming to RoHS directive.
- * The applicable panel size is for typical reference dimensions.

TEMPERATURE AND HUMIDITY RANGES

Temperature range (°C)	Operating	0 to +60
	Storage	-30 to +85
Humidity range(%)RH		95max. [Maximum wet-bulb temperature 38°C. No dew.]

SHAPES AND DIMENSIONS



*1 Substrate(PWB: Printed wiring board): Flame retardant material UL94V-0(FR-4 or CEM-3) t=1mm

Weight: 29.6g typ.

*2 : High-voltage generator (The entire surface within a range of 45mm away from the end of the base in the output)

Dimensions in mm

	Connector manufacturer's company and type	Symbol
1 Input connector	Japan Solderless Terminal Co., Ltd. S5B-PH-SM4	CN1
2 Output connector	Japan Solderless Terminal Co., Ltd. SM02(8.0)B-BHS-1	CN2

TERMINAL NUMBERS AND FUNCTIONS

CN1

Terminal No.	Function	Symbol
CN1-1	Input voltage Edc: 10.8 to 13.2V/12V	V _{in}
CN1-2	0V	GND
CN1-3	Brightness dimmer voltage* Edc: 0 to 2.5V(Maximum brightness on 0V)	V _{br}
CN1-4	Used in the internal circuits, do not connect.	N.C.
CN1-5	Remote voltage Edc 0V : off/5 to 15V:on	V _{rmt}

* Brightness can be controlled by adjusting V_{br} within a range of 0 to 2.5V.

CN2

Terminal No.	Function		Symbol
CN2-1	Output 1[High voltage] I _{rms}	4 to 8mA	V _{HIGH1}
CN2-2	—	—	N.C.
CN2-3	Output 1[Low voltage]	(0.6V)	V _{LOW1}

CN3

Terminal No.	Function		Symbol
CN3-1	Output 2[High voltage] I _{rms}	4 to 8mA	V _{HIGH2}
CN3-2	—	—	N.C.
CN3-3	Output 2[Low voltage]	(0.6V)	V _{LOW2}

- Conformity to RoHS Directive: This means that, in conformity with EU Directive 2002/95/EC, lead, cadmium, mercury, hexavalent chromium, and specific bromine-based flame retardants, PBB and PBDE, have not been used, except for exempted applications.

- All specifications are subject to change without notice.

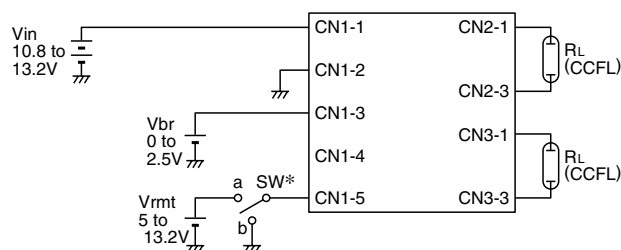
CXA-P1612-VJL

ELECTRICAL CHARACTERISTICS

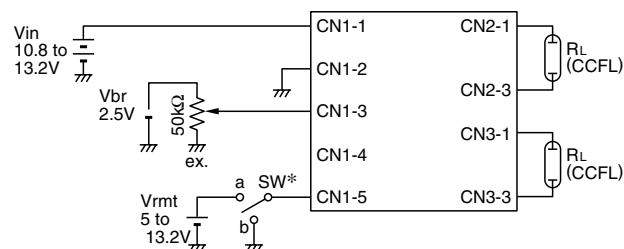
Item	Unit	Symbol	Specification			Condition			Brightness	
			min.	typ.	max.	V _{in} (V)	V _{br} (V)	T _a (°C)		R _L (kΩ)
Output current I _{rms}	mA	I _{out}	7.2	8.0	8.8	10.8±0.05	0	0 to +60	70±2	Maximum
			7.2	8.0	8.8	12.0±0.05	0	0 to +60	70±2	Maximum
			7.2	8.0	8.8	13.2±0.05	0	0 to +60	70±2	Maximum
			3.5	4.0	4.5	12.0±0.05	2±0.05	0 to +60	70±2	Minimum
Input current I _{dc}	A	I _{in}	—	1.0	1.5	12.0±0.05	0	0 to +60	70±2	
Oscillation frequency	kHz	F _L	50	55	60	12.0±0.05	0	0 to +60	70±2	
Open circuit output voltage E _{rms}	kV	V _{open}	1.5	1.6	—	10.8±0.05	0	0 to +60	∞	

TYPICAL CONNECTIONS

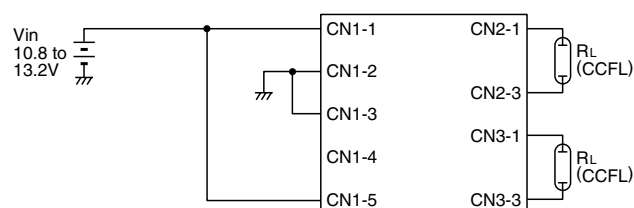
EXAMPLE OF VOLTAGE DIMMER CONTROL



EXAMPLE OF POTENTIOMETER DIMMER CONTROL



NO DIMMER CONTROL (BRIGHTNESS MAX.)



* SW a:on, b:off

BRIGHTNESS DIMMER VOLTAGE- OUTPUT CURRENT CHARACTERISTICS

