

# DC to AC Inverters

Conformity to RoHS Directive

## Connector type, Dimming, 8W, for 2 Bulbs

### CXA Series CXA-P1212B-WJL

#### FEATURES

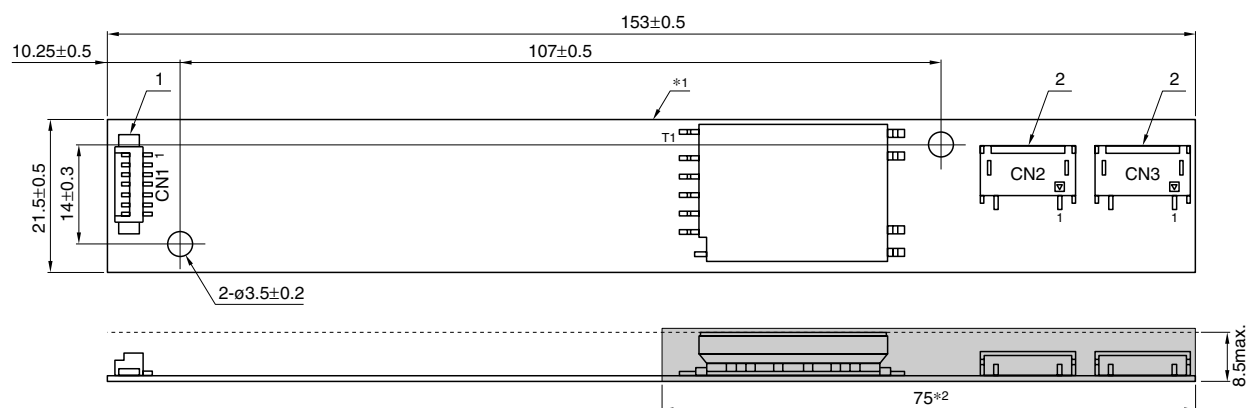
- For 2 bulbs.
- Corresponding to wide operating temperature range.
- Applicable panel size\* : 10 to 12-inch
- With brightness control function (Pulse Wide Modulation mode).
- With lamp failure detector.
- The high-voltage terminals and patterns are coated with silicone so as to avoid the defects caused by dust.
- It is a product conforming to RoHS directive.

\* The applicable panel size is for typical reference dimensions.

#### TEMPERATURE AND HUMIDITY RANGES

Temperature range (°C)	Operating	-10 to +70
	Storage	-30 to +85
Humidity range(%)RH		95max. [Maximum wet-bulb temperature 38°C. No dew.]

#### SHAPES AND DIMENSIONS



\*1 Substrate(PWB: Printed wiring board): Flame retardant material UL94V-0(FR-4 or CEM-3) t=1mm

\*2 : High-voltage generator (The entire surface within a range of 75mm away from the end of the base in the output)

Weight: 21.2g typ.

Dimensions in mm

	Connector manufacturer's company and type	Symbol
1 Input connector	Molex Japan Co., Ltd. 53261-0771	CN1
2 Output connector	Japan Solderless Terminal Co., Ltd. SM02(8.0)B-BHS-1	CN2, CN3

#### TERMINAL NUMBERS AND FUNCTIONS

##### CN1

Terminal No.	Function	Symbol
CN1-1	Input voltage Edc: 10.8 to 13.2V/12V[nom.]	Vin
CN1-2		
CN1-3	0V	GND
CN1-4		
CN1-5	Remote voltage Edc 0 to 0.4V: off/2.5 to 13.2V:on	Vrmt
CN1-6	Lamp failure detector	Vst
	0V: Normal condition/5V: Abnormal condition	
CN1-7	Brightness dimmer voltage *1	Vbr
	Edc: 0 to 2.5V(Maximum brightness on 0V)	
	Brightness dimmer *2VR resistance	
	VR: 0 to 50kΩ (Maximum brightness on 0Ω)	Rbr

\*1 Brightness can be controlled by adjusting Vbr within a range of 0 to 2.5V.

\*2 Brightness can be controlled by adjusting Rbr within a range of 0 to 50kΩ.

##### CN2

Terminal No.	Function	Symbol
CN2-1	Output 1[High voltage] Irms	V <sub>HIGH1</sub>
CN2-2	—	N.C.
CN2-3	Output 1[Low voltage]	V <sub>LOW1</sub>

##### CN3

Terminal No.	Function	Symbol
CN3-1	Output 2[High voltage] Irms	V <sub>HIGH2</sub>
CN3-2	—	N.C.
CN3-3	Output 2[Low voltage]	V <sub>LOW2</sub>

- Conformity to RoHS Directive: This means that, in conformity with EU Directive 2002/95/EC, lead, cadmium, mercury, hexavalent chromium, and specific bromine-based flame retardants, PBB and PBDE, have not been used, except for exempted applications.

- All specifications are subject to change without notice.

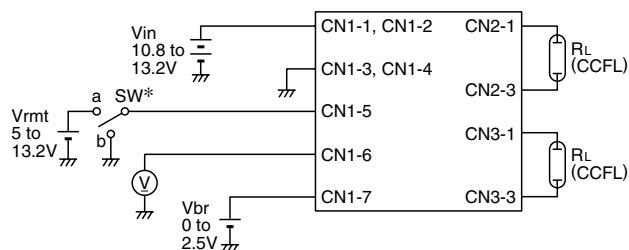
## CXA-P1212B-WJL

### ELECTRICAL CHARACTERISTICS

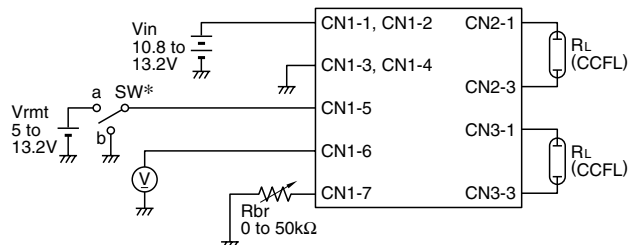
Item	Unit	Symbol	Specification			Condition		Brightness		
			min.	typ.	max.	Vin(V)	Vbr(V)/Rbr(kΩ)		Ta(°C)	RL(kΩ)
Output current I <sub>rms</sub>	mA	I <sub>out</sub>	5.3	6.0	6.7	12±1.2	0/0	-10 to +70	85 to 95	Maximum
			5.5	6.0	6.5	12±0.6	0/0	23±5	90	Maximum
			1.1	2.0	2.9	12±1.2	2.5/50	-10 to +70	85 to 95	Minimum
			1.2	2.0	2.8	12±0.6	2.5/50	23±5	90	Minimum
Input current I <sub>dc</sub>	A	I <sub>in</sub>	—	0.8	1.0	12±0.6	0/0	-10 to +70	90	
Oscillation frequency	kHz	F <sub>L</sub>	35	40	45	12±0.6	0/0	-10 to +70	85 to 95	
Open circuit output voltage E <sub>rms</sub>	kV	V <sub>open</sub>	1.5	1.7	—	12±1.2	0/0	-10 to +70	∞	

### TYPICAL CONNECTIONS

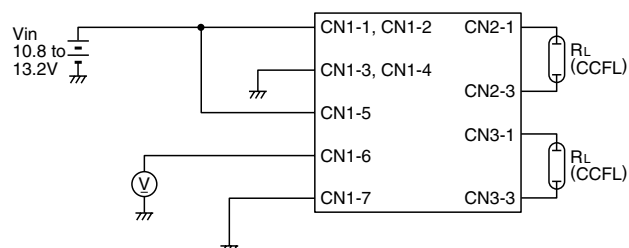
#### EXAMPLE OF VOLTAGE DIMMER CONTROL



#### EXAMPLE OF POTENTIOMETER DIMMER CONTROL



#### NO DIMMER CONTROL (BRIGHTNESS MAX.)



\* SW a:on, b:off

### BRIGHTNESS DIMMER VOLTAGE- OUTPUT CURRENT CHARACTERISTICS

