

DC to AC Inverters

Conformity to RoHS Directive

Connector type, Dimming, 5W, for 2 Bulbs

CXA Series CXA-M1212-RJL

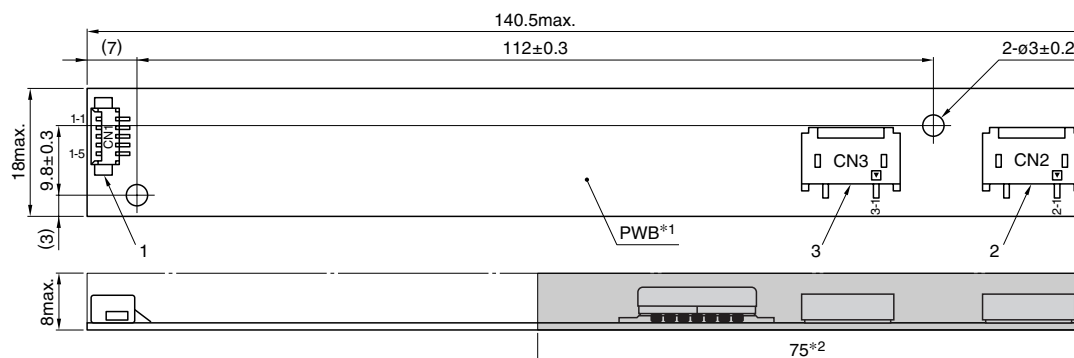
FEATURES

- The CXA-M1212-RJL is an inverter for cold cathode fluorescent lamps and features a built-in dimmer.
- Because they employ advanced output current control, fluctuations in input voltage, load, and distributed capacitance have virtually no effect on brightness.
- Output open and short circuit conditions result in no damage, heat generation, or other difficulties.
- Safe design that includes a built-in overcurrent protection element.
- Insulation is simplified due to flat backside surface of board.
- It is a product conforming to RoHS directive.

TEMPERATURE AND HUMIDITY RANGES

Temperature range (°C)	Operating	0 to +60
	Storage	-30 to +85
Humidity range(%)RH	95max. [Maximum wet-bulb temperature 38°C]	

SHAPES AND DIMENSIONS



*1 Substrate (PWB: Printed wiring board): Flame retardant material UL94V-0(FR-4 or CEM-3) t=1mm

Weight: 15.5g typ.

*2 : High-voltage generator (The entire surface within a range of 75mm away from the end of the base in the output)

Dimensions in mm

	Connector manufacturer's company and type			Symbol
1	Input connector	Molex Japan Co., Ltd.	53261-0571	CN1
2	Output connector	Japan Solderless Terminal Co., Ltd.	SM02(8.0)B-BHS-1	CN2
3	Output connector	Japan Solderless Terminal Co., Ltd.	SM02(8.0)B-BHS-1	CN3

TERMINAL NUMBERS AND FUNCTIONS

No. CN1

Terminal No.	Functions	Symbol
CN1-1	Input voltage Edc: 9.6 to 14.4V 12V[nom.]	V _{in}
CN1-2	0V	GND
CN1-3	Remote voltage Edc 0V: off/5 to 14.4V:on	V _{rmt}
CN1-4	Brightness dimmer voltage* Edc: 0 to 50kΩ	VR
CN1-5	(Maximum brightness on 50kΩ)	

* Brightness can be controlled by adjusting VR within a range of 0 to 50kΩ.

CN2

Terminal No.	Functions	Symbol
CN3-1	Output 1[High voltage] I _{rms} 2 to 6mA	V _{HIGH1}
CN3-2	—	N.C.
CN3-3	Output 1[Low voltage] (2V)	V _{LOW1}

CN3

Terminal No.	Functions	Symbol
CN3-1	Output 2[High voltage] I _{rms} 2 to 6mA	V _{HIGH2}
CN3-2	—	N.C.
CN3-3	Output 2[Low voltage] (2V)	V _{LOW2}

- Conformity to RoHS Directive: This means that, in conformity with EU Directive 2002/95/EC, lead, cadmium, mercury, hexavalent chromium, and specific bromine-based flame retardants, PBB and PBDE, have not been used, except for exempted applications.

- All specifications are subject to change without notice.

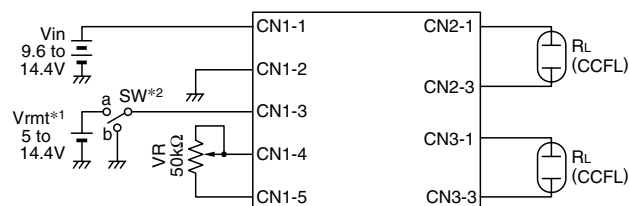
CXA-M1212-RJL

ELECTRICAL CHARACTERISTICS

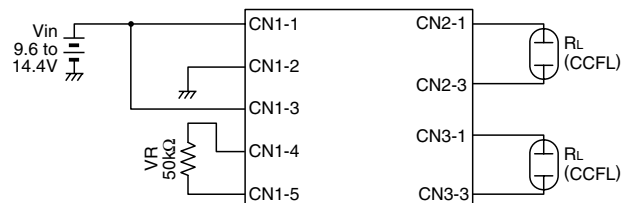
Items	Unit	Symbol	Specifications			Conditions			Brightness	
			min.	typ.	max.	Vin(V)	VR(k Ω)	Ta($^{\circ}$ C)		RL(k Ω)
Output current I _{rms}	mA	lout1	5.3	6	6.7	9.6 to 14.4	50	0 to +60	50 to 70	Maximum
		lout2	5.3	6	6.7	9.6 to 14.4	50	0 to +60	50 to 70	Maximum
		lout1	5.5	6	6.5	12	50	23 \pm 5	60	Maximum
		lout2	5.5	6	6.5	12	50	23 \pm 5	60	Maximum
		lout1	1.7	2	2.3	12	0	23 \pm 5	180	Minimum
		lout2	1.7	2	2.3	12	0	23 \pm 5	180	Minimum
Input current I _{dc}	A	I _{in}	—	0.47	0.75	9.6 to 14.4	0 to 50	0 to +60	50 to 70	
Oscillation frequency	kHz	FL	33	39	45	9.6 to 14.4	50	0 to +60	50 to 70	
Open circuit output voltage E _{rms}	V	V _{open}	1400	1500	—	9.6 to 14.4	0 to 50	0 to +60	∞	

TYPICAL CONNECTIONS

EXAMPLE OF POTENTIOMETER DIMMER CONTROL



NO DIMMER CONTROL



*1 V_{rmt} (remote voltage) shall be ON after V_{in} was ON.

*2 SW a: on, b:off

BRIGHTNESS DIMMER RESISTANCE-OUTPUT CURRENT CHARACTERISTICS

