

DC to AC Inverters

Connector type, Dimming, 4W, for 1 Bulb

Conformity to RoHS Directive

CXA Series CXA-L0605-VJL

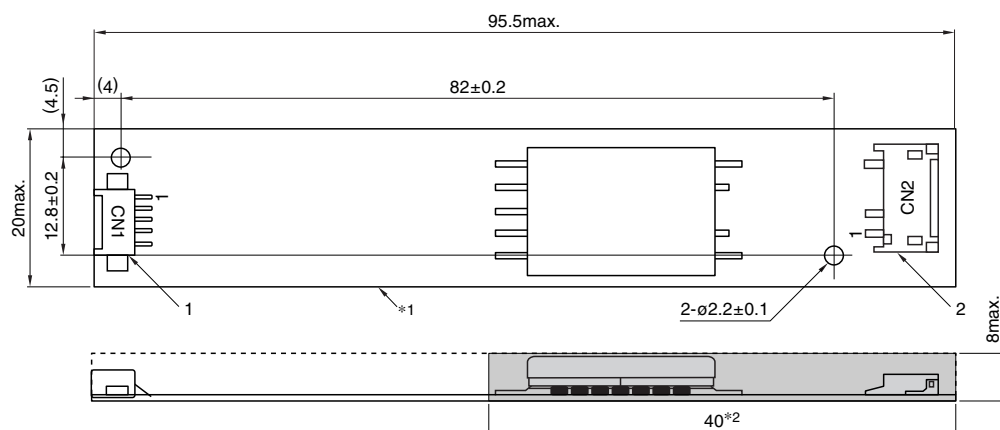
FEATURES

- The CXA-L0605-VJL is an inverter for cold cathode fluorescent lamps and features a built-in dimmer.
- Because they employ advanced output current control, fluctuations in input voltage, load, and distributed capacitance have virtually no effect on brightness.
- Output open and short circuit conditions result in no damage, heat generation, or other difficulties.
- Safe design that includes a built-in overcurrent protection element.
- Insulation is simplified due to flat backside surface of board.
- The high-voltage terminals and patterns are coated with silicone so as to avoid the defects caused by dust.
- It is a product conforming to RoHS directive.

TEMPERATURE AND HUMIDITY RANGES

Temperature range (°C)	Operating	0 to +60
	Storage	-20 to +85
Humidity range(%)RH	95max. [Maximum wet-bulb temperature 38°C]	

SHAPES AND DIMENSIONS



*1 Substrate (PWB: Printed wiring board): Flame retardant material UL94V-0 (FR-4 or CEM-3) $t=1\text{mm}$

Weight: 14.5g typ.

*2 : High-voltage generator (The entire surface within a range of 40mm away from the end of the base in the output)

Dimensions in mm

	Connector manufacturer's company and type		Symbol	
1	Input connector	Molex Japan Co., Ltd.	53261-0571	CN1
2	Output connector	Japan Solderless Terminal Co., Ltd.	SM02(8.0)B-BHS-1	CN2

TERMINAL NUMBERS AND FUNCTIONS

CN1

Terminal No.	Functions	Symbol
CN1-1	Input voltage Edc: 4.75 to 5.25V 5V[nom.]	V _{in}
CN1-2	0V	GND
CN1-3	Remote voltage Edc 0V: off/5 to 5.25V:on	V _{mt}
CN1-4	Brightness dimmer voltage* Edc: 0 to 3V(Maximum brightness on 0V)	V _{br}
CN1-5	Used in the internal circuits, do not connect.	N.C.

* Brightness can be controlled by adjusting V_{br} within a range of 0 to 3V.

CN2

Terminal No.	Functions		Symbol
CN2-1	Output[High voltage] I _{rms}	3 to 6mA	V _{HIGH}
CN2-2	—	—	N.C.
CN2-3	Output[Low voltage]	(2V)	V _{LOW}

- Conformity to RoHS Directive: This means that, in conformity with EU Directive 2002/95/EC, lead, cadmium, mercury, hexavalent chromium, and specific bromine-based flame retardants, PBB and PBDE, have not been used, except for exempted applications.

- All specifications are subject to change without notice.

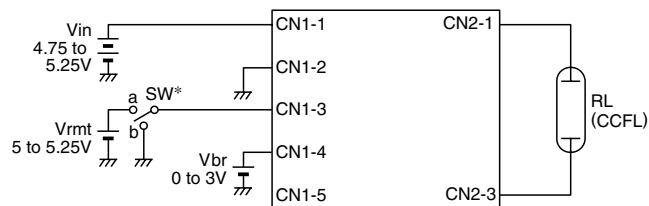
CXA-L0605-VJL

ELECTRICAL CHARACTERISTICS

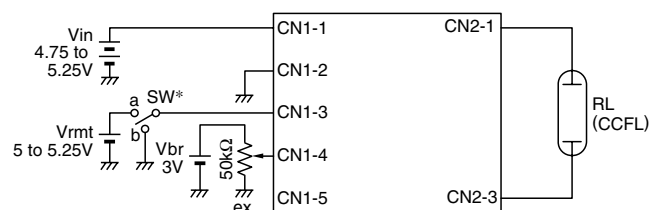
Items	Unit	Symbol	Specifications			Conditions		RL(k Ω)	Brightness	
			min.	typ.	max.	Vin(V)	Vbr(V)			
Output current I _{rms}	mA	I _{out}	5.3	6	6.7	5 \pm 0.25	0	0 to 60	70 to 90	Maximum
			2.5	3	3.5	5 \pm 0.25	3	0 to 60	226	Minimum
Input current I _{dc}	A	I _{in}	—	0.7	0.8	5	0	23 \pm 5	80	
Oscillation frequency	kHz	FL	35	45	55	5 \pm 0.25	0	0 to 60	70 to 90	
Open circuit output voltage E _{rms}	V	V _{open}	1500	1700	—	5 \pm 0.25	0	0 to 60	∞	

TYPICAL CONNECTIONS

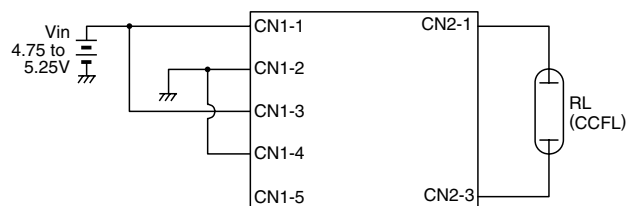
EXAMPLE OF VOLTAGE DIMMER CONTROL



EXAMPLE OF POTENTIOMETER DIMMER CONTROL



NO DIMMER CONTROL(BRIGHTNESS MAX.)



* SW a:on, b:off

BRIGHTNESS DIMMER VOLTAGE-OUTPUT CURRENT CHARACTERISTICS

