

User's Guide

C-28-0704

VFD

(Vacuum Fluorescent Character Display Module)

For product support, contact

New haven Display International
2511 Technology Drive #101
Elgin , IL 601 24
Tel: (847) 8 44-8795 Fax: (847) 8 44-8796

October 31, 2006

Vacuum Fluorescent Display Specification

PART NUMBER: C-28-0704

FEATURES: 8 Digits, Seven Segmented, with Icons – DVD, SVCD

APPLICATION: Character Display (7-Seg)

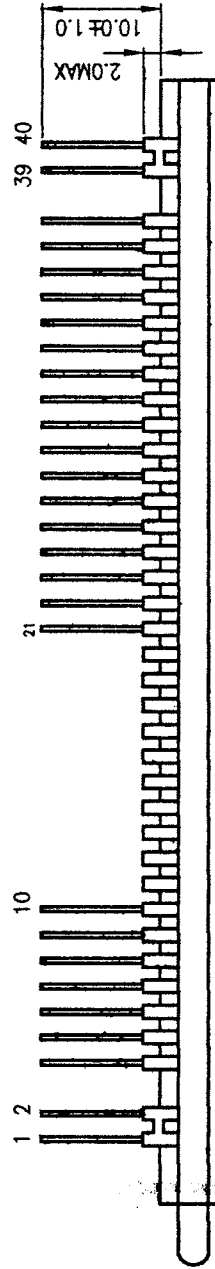
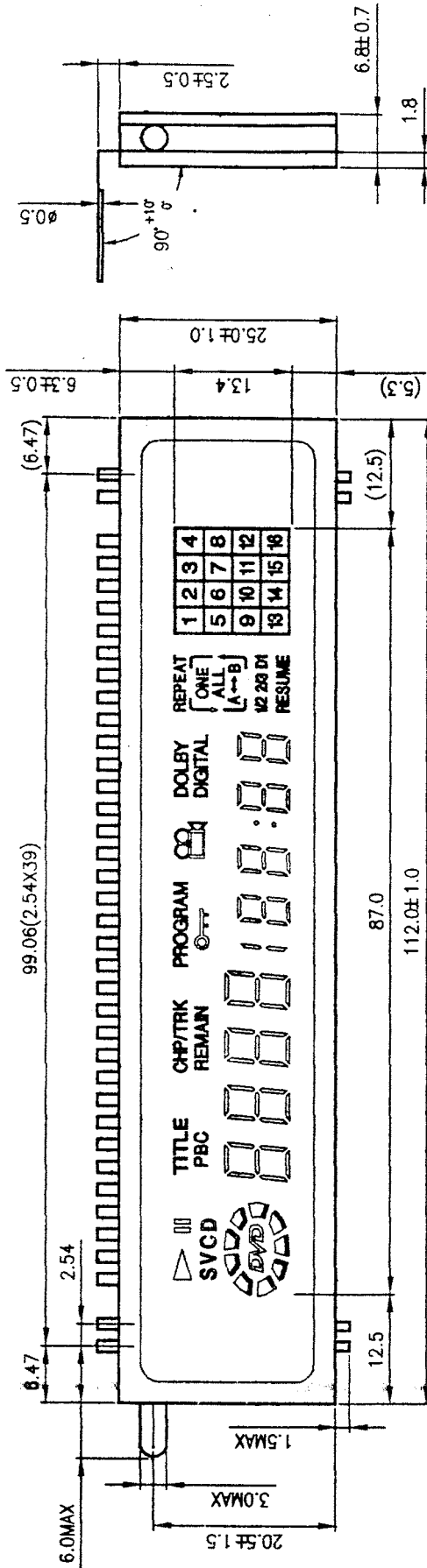
RATINGS: Below

Outer Dimensions	Panel Length	P.L.	112.0	mm	
	Panel Height	P.H.	25.0	mm	
	Panel Thickness	P.T.	6.8	mm	
Leads	Lead Pitch	L.P.	2.54	Mm	
	Lead Out	-	SIL		
Character Size	Character Height	C.H.	Multi	mm	
	Character Width	C.W.	Multi	mm	
Item	Symbol	Min.	Recommended	Max.	Unit
Filament Voltage	Ef	3.9	4.3	4.7	Vac
Peak Grid Voltage	Ec	-	25.0	28.0	Vp-p
Peak Anode Voltage	Eb	-	25.0	28.0	Vp-p
Cut-off Bias	Ek	-	-	-	-
Duty Cycle	Du	-	1/8	-	-
Pulse Width	Tp	-	100	-	uS
Operating Temperature	Topr	-20	-	+ 70	C
Storage Temperature	Tstg	-55	-	+ 85	C
Color of Illumination	Green / Red / Yellow				

Electrical Characteristics

Item	Symbol	Test Condition	Min.	Typical	Max.	Unit
Filament Current	If -	Ef = 4.3 Vac eb = ec = 0	117.0 -	130.0 -	143.0 -	mAac -
Anode Current	ib/1G ib/2G ib/3,4G ib/5,6,7G -	Ef = 4.3 Vac eb = 25.0 Vp-p ec = 25.0 Vp-p Du = 1/8 tp = 100 uS	- - - - -	11.0 13.0 6.0 9.0 -	22.0 26.0 12.0 18.0 -	mAp-p mAp-p mAp-p mAp-p mAp-p
Grid Current	ic/1G ic/2G ic/3,4G ic/5,6,7G -		- - - - -	11.0 13.0 8.0 11.0 -	22.0 26.0 16.0 22.0 -	mAp-p mAp-p mAp-p mAp-p mAp-p
Luminance	L(G) L(R) L(Y)		350 (102) 35 (10) 60 (17)	700 (204) 70 (20) 120 (34)	- - - -	cd/m ² (fL) cd/m ² (fL) cd/m ² (fL)
Luminance Ratio	Lmin/Lmax		50	-	-	%
Grid Cut-off Voltage	Ecco	Ef = 4.3 Vac Eb = 25.0 Vdc	-4.5	-	-	Vdc
Anode Cut-off Voltage	Ebco	Ef = 4.3 Vac ec = 25.0 Vp-p Du = 1/8 tp = 100 uS	-4.5	-	-	Vdc

外形尺寸: (mm)



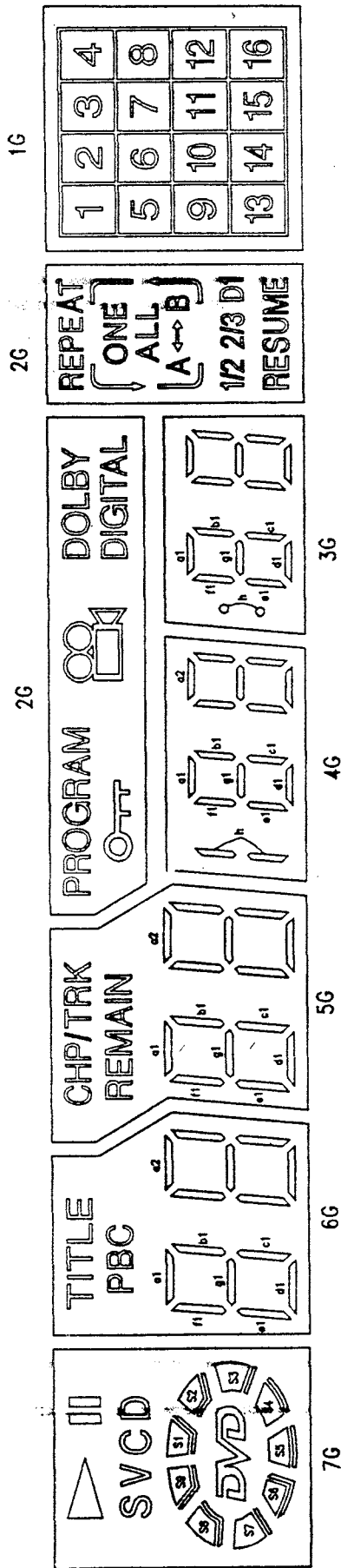
管脚连接

管脚序号	1	2	3	4	5	6	7	8	9	10	11	12	13	14	15	16	17	18	19	20
电板	F	F	Np	7G	6G	5G	4G	3G	2G	1G	Nc	Nc	Nc	Nc	Nc	Nc	Nc	Nc	Nc	Nc
管脚序号	21	22	23	24	25	26	27	28	29	30	31	32	33	34	35	36	37	38	39	40
电板	P1	P2	P3	P4	P5	P6	P7	P8	P9	P10	P11	P12	P13	P14	P15	P16	P17	Np	F	F

注: F: 灯丝 G: 栅极 P: 阳极 Nc: 无引脚 Np: 无引脚

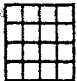





F= Filament, G= Grid, P= Anode, NC= No Connect, NP= No Pin

栅极分割及显示面



显示颜色: SVC, DOLBY DIGITAL, RESUME S1 S4 S7 为红色, OFF S3 S6 S9 为黄色, 其余为绿色

真值表

	7G	6G	5G	4G	3G	2G	1G
P1	—	—	—	—	—	—	
P2		a1	a1	a1	a1		1
P3		b1	b1	b1	b1	PROGRAM	2
P4	CD	TITLE	CHP/TRK	—	—		3
P5	V	c1	c1	c1	c1	DOLBY DIGITAL	4
P6	S	d1	d1	d1	d1	ALL	5
P7	<i>DVD</i>	e1	e1	e1	e1	REPEAT 	6
P8	S1	f1	f1	f1	f1	ONE	7
P9	S2	g1	g1	g1	g1	—	8
P10	S3	PBC	REMAIN	h	h	—	9
P11	S4	a2	a2	a2	a2	B	10
P12	S5	b2	b2	b2	b2	A ↔	11
P13	S6	c2	c2	c2	c2	—	12
P14	S7	d2	d2	d2	d2	1/2	13
P15	S8	e2	e2	e2	e2	2/3	14
P16	S9	f2	f2	f2	f2	D1	15
P17	—	g2	g2	g2	g2	RESUME	16