

User's Guide

D0119LT-29-1901

VFD- **RoHS Compliant**

(Vacuum Fluorescent Display Module)

For product support, contact

Newhaven Display International
2511 Technology Drive, #101
Elgin, IL 60124

Tel: (847) 844-8795 Fax: (847) 844-8796

February 25, 2008

Vacuum Fluorescent Display Specification

PART NUMBER: D0119LT-29-1901

FEATURES: 19 Digits, 7-Segmented, Instrumentation, Decimal Point, Comma

APPLICATION: Character Display (7-Segmented)

RATINGS: Below

Outer Dimensions	Panel Length	P.L.	205.0	mm	
	Panel Height	P.H.	29.0	mm	
	Panel Thickness	P.T.	8.0	mm	
Leads	Lead Pitch	L.P.	2.54	mm	
	Lead Out	-	SIL		
Character Size	Character Height	C.H.	11.0 / 13.0	mm	
	Character Width	C.W.	4.9 / 5.5	mm	
Item	Symbol	Min.	Recommended	Max.	Unit
Filament Voltage	Ef	7.65	8.5	9.35	Vac
Peak Grid Voltage	ec	-	42.0	46.0	Vp-p
Peak Anode Voltage	eb	-	42.0	46.0	Vp-p
-	tp	-	-	-	-
Duty Cycle	Du	-	1/21	-	-
Pulse Width	tp	-	100	-	uS
Operating Temperature	Topr	-40	-	+85	C
Storage Temperature	Tstg	-50	-	+95	C
Color of Illumination	Green				

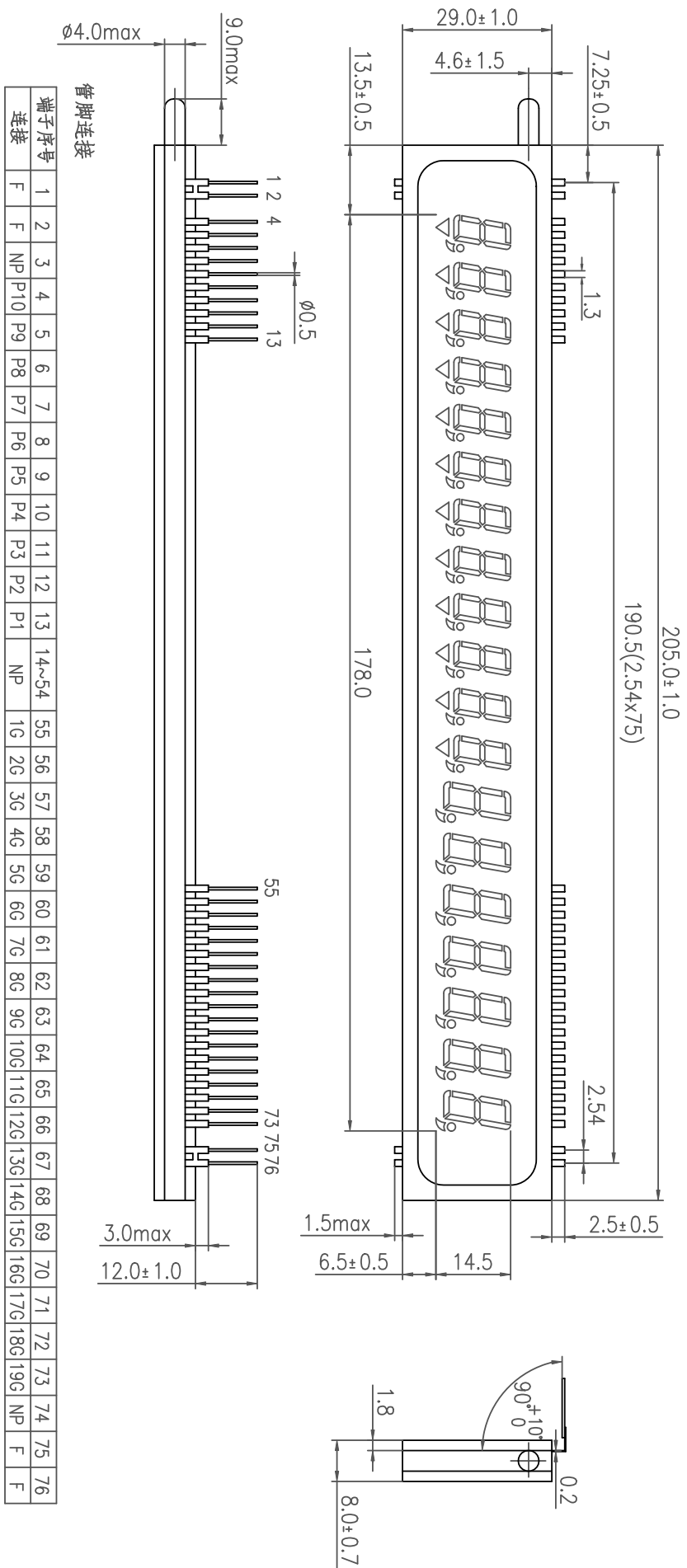
D0119LT-29-1901

**Electrical
Characteristics**

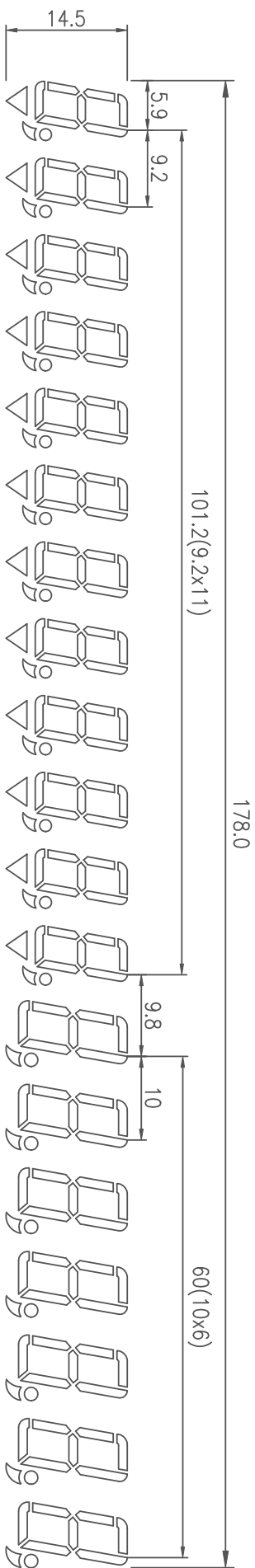
Item	Symbol	Test Condition	Min.	Typical	Max.	Unit
Filament Current	lf	Ef = 8.5 Vac	123.8	137.5	151.3	mAac
	-	eb = ec = 0	-	-	-	-
Anode Current	ib/1G~12G	Ef = 8.5 Vac eb = 42.0 Vp-p ec = 42.0 Vp-p Du = 1/21 tp = 100 uS	-	9.0	18.0	MAp-p
	ib/13G~19G		-	10.0	20.0	MAp-p
	-		-	-	-	MAp-p
	-		-	-	-	MAp-p
	-		-	-	-	MAp-p
Grid Current	ic / 1G~12G		-	11.5	23.0	MAp-p
	ic / 13G~19G		-	12.0	24.0	MAp-p
	-		-	-	-	MAp-p
	-		-	-	-	MAp-p
	-		-	-	-	MAp-p
Luminance	L(G)		350	700	-	cd/m ²
	-		(102)	(204)	-	fL
Luminance Ratio	Lmin/Lmax		50	-	-	%
Grid Cut-off Voltage	Ecco	Ef = 8.5 Vac eb = 42.0 Vdc	-8.0	-	-	Vdc
Anode Cut-off Voltage	Ebco	Ef = 8.5 Vac ec = 42.0 Vp-p Du = 1/21 tp = 100uS	-8.0	-	-	Vdc

Drive Mode = Dynamic State

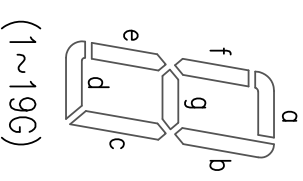
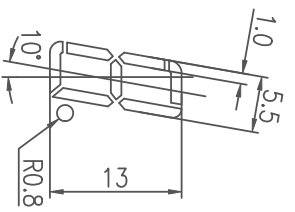
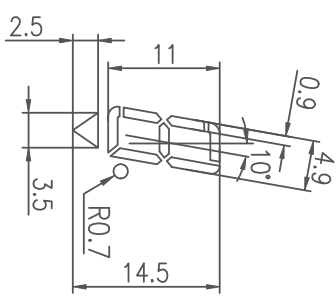
外形图



显示面



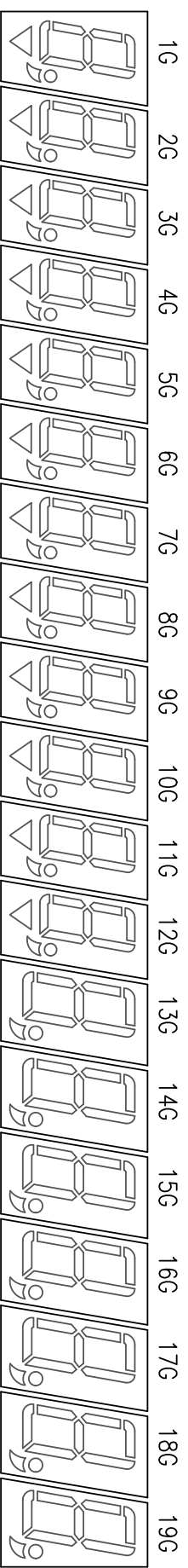
显示颜色：绿色（全部）



栅板分割

(1~12G)

(13~19G)



阳极连接

	1G	2G	3G	4G	5G	6G	7G	8G	9G	10G	11G	12G	13G	14G	15G	16G	17G	18G	19G	
P1	a	a	a	a	a	a	a	a	a	a	a	a	a	a	a	a	a	a	a	a
P2	b	b	b	b	b	b	b	b	b	b	b	b	b	b	b	b	b	b	b	b
P3	f	f	f	f	f	f	f	f	f	f	f	f	f	f	f	f	f	f	f	f
P4	g	g	g	g	g	g	g	g	g	g	g	g	g	g	g	g	g	g	g	g
P5	c	c	c	c	c	c	c	c	c	c	c	c	c	c	c	c	c	c	c	c
P6	e	e	e	e	e	e	e	e	e	e	e	e	e	e	e	e	e	e	e	e
P7	d	d	d	d	d	d	d	d	d	d	d	d	d	d	d	d	d	d	d	d
P8	o	o	o	o	o	o	o	o	o	o	o	o	o	o	o	o	o	o	o	o
P9	∩	∩	∩	∩	∩	∩	∩	∩	∩	∩	∩	∩	∩	∩	∩	∩	∩	∩	∩	∩
P10	∇	∇	∇	∇	∇	∇	∇	∇	∇	∇	∇	∇								