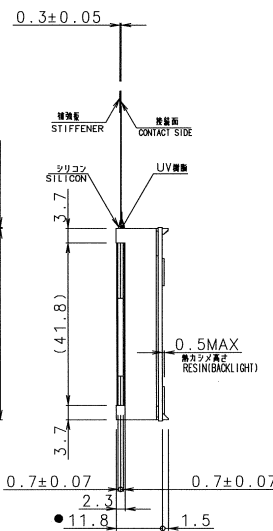
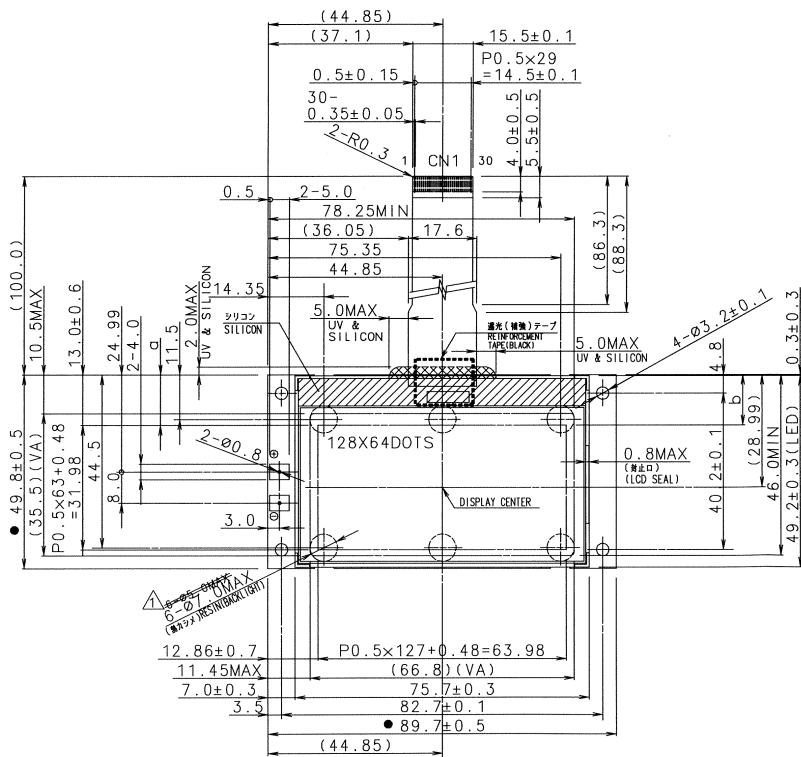


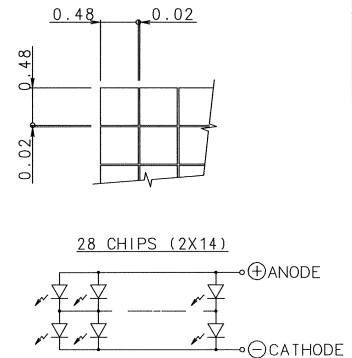
| ISSUE | REVISIONS | DRAWN | APPROVED | DATE |
|-------|-----------|-------------|--------------|-------------|
| ▲ | ■角シフト検査変更 | K. MURAKAMI | S. Kobayashi | FEB. 09 '01 |

CN1 PIN ASSIGNMENT

| No. | SYMBOL | No. | SYMBOL | No. | SYMBOL |
|-----|--------|-----|-------------------|-----|-------------------|
| 1 | NC | 11 | D4 | 21 | CAP2 ⁻ |
| 2 | CS1 | 12 | D5 | 22 | CAP2 ⁺ |
| 3 | RES | 13 | D6 | 23 | V1 |
| 4 | A0 | 14 | D7 | 24 | V2 |
| 5 | WR | 15 | V _{DD} | 25 | V3 |
| 6 | RD | 16 | GND | 26 | V4 |
| 7 | D0 | 17 | V _{OUT} | 27 | V5 |
| 8 | D1 | 18 | CAP3 ⁻ | 28 | VR |
| 9 | D2 | 19 | CAP1 ⁺ | 29 | C86 |
| 10 | D3 | 20 | CAP1 ⁻ | 30 | IRS |



DOTS DETAIL (20:1)



注記
 NOTE 1. 表示傾斜: |a-b| ≤ 0.5 (Display skew)
 2. ●印の付いた寸法は、仕様は管理特性の指示を示す。
 THE DIMENSIONS WITH THE MARK ● ARE CONTROLLED AS A PARTICULAR CHARACTERISTIC.

| MEASURE | TOLERANCE | | | THIRD ANGLE PROJECTION | DATE DEC. 22 '00 | OPTREX CORPORATION |
|---------------|-----------|------|------|------------------------|------------------|---------------------|
| | A | B | C | | | |
| L ≤ 16 | ±0.1 | ±0.3 | ±1 | UNIT | APPROVED | TITLE |
| 16 < L ≤ 63 | ±0.2 | ±0.5 | ±1.5 | mm | S. Matsuoka | DIMENSIONAL OUTLINE |
| 63 < L ≤ 250 | ±0.3 | ±0.8 | ±2 | SCALE | CHECKED | CODE |
| 250 < L ≤ 500 | ±0.5 | ±1.2 | ±3 | 1:1 | M. Kinoshita | F-51320GNY-LY-AA |
| 500 < L | ±0.8 | ±2 | ±4 | DRAWN | K. MURAKAMI | DWG NO |
| ANGLE | ±1° | ±5° | ±10° | | | UE-310360 A |