

Active Matrix

TFT LCDs

Deliver Best-in-Class

Front-of-Screen Performance



Optrex TFT LCDs provide exceptionally high contrast, color saturation and luminance and a range of performance enhancements such as Natural Color Matrix (NCM) for true color fidelity, Anti-reflective coating and Ultra-Wide Viewing angles.

Why Choose Optrex for your TFT LCD Designs?

- Upward compatibility
- Higher luminance (Up to 1500 nits)
- Super-Wide-View technology (Up to 170° viewing angle)
- Long-life LED backlighting
- Wide temperature range
- RoHS compliant*
- NCM (Natural Color Matrix)
- Factory installed touch panels
- 6/8 bit compatibility with LVDS interfaces

- Reduced EMI via LVDS interfaces
- Anti-reflective coating
- Wide format (16:9)
- Reverse Scan



Quickstart Your Design with LCD ToolKITs™

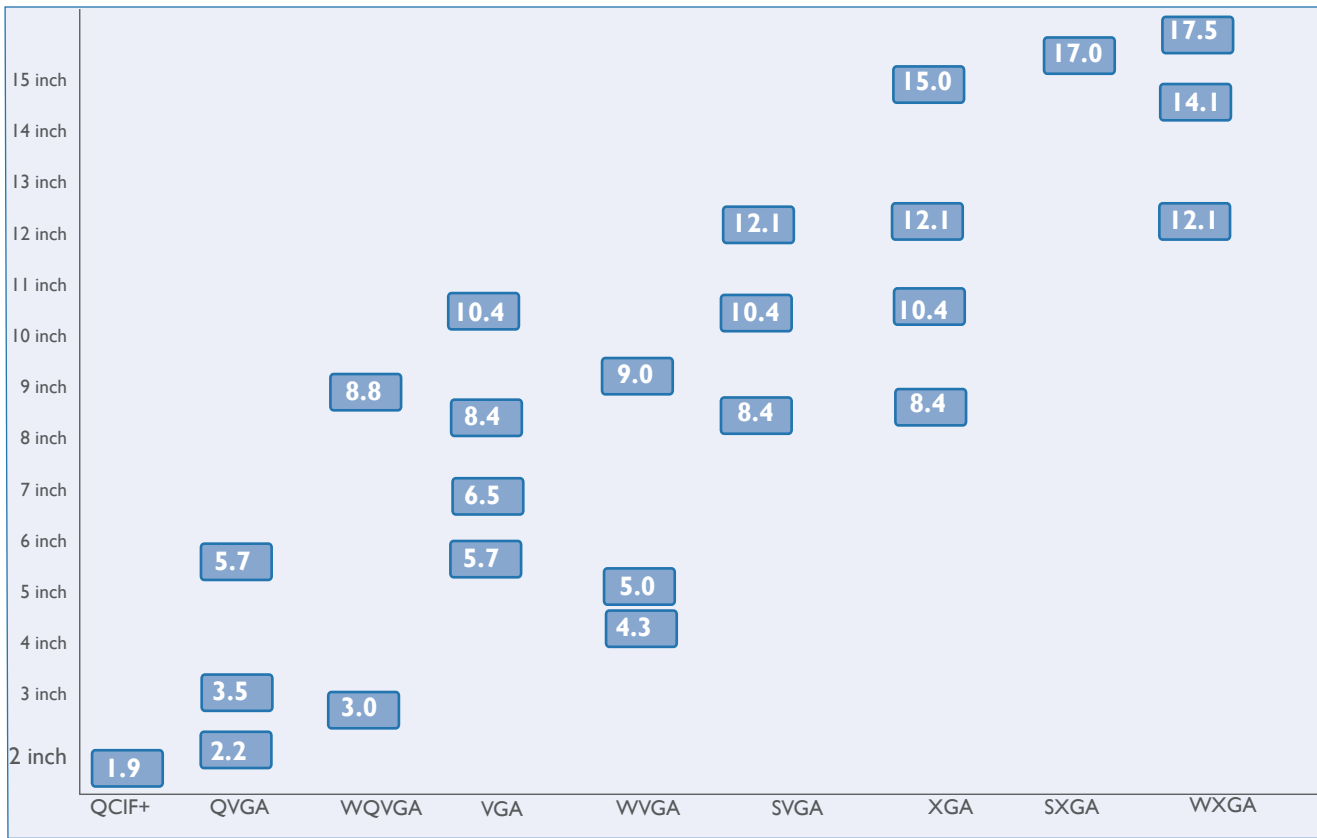
To speed design and save engineering & procurement time, Optrex's LCD ToolKITs™ contain everything you need to put a TFT LCD display into operation - right out of the box.

- TFT panel
- Controller
- Inverter
- Cables
- Software
- Power supply



TFT LCDs At-a-Glance

Optrex TFT LCDs deliver best-in-class front-of-screen performance for a wide variety of Industrial, Telecommunications and Automotive applications in sizes ranging from 1.9-inch to 17.5-inch displays.



Optrex Offers Long Manufacturing Lifecycles

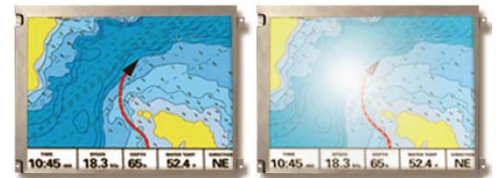
- Three to five year life cycles
- Backward compatibility in future models
- Performance increases with each planned upgrade

Special Features / Technologies



Anti-Reflective Coating

Surface reflectivity is reduced to less than 1%. Providing outstanding performance in high ambient-light environments with excellent legibility, No glare, no decrease in luminance or contrast, and no increase in backlight power consumption.



Anti-reflective

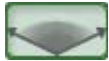
Anti-glare



Touch Screen Solution

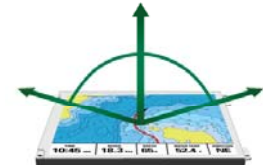
A touch screen display provides the ability for the user to make choices by touching icons or graphical buttons on the screen.

- Touch Switch Technology - Optrex develop a unique touch technology based on projective capacitive touch technology.
- Standard 4-wire touch screen product integrated at the factory.
- Other touch technology and custom touch product also available.



SWV and SWV Technology

- A film technology that we apply to the LCD to achieve wide viewing angle up to 80/80/60/80.
- Super-Wide-View (SWV) Technology achieves viewing angle to 85/85/85/85. (Available on certain size only)



High Luminance

Conventional TFT LCD will have so-called “wash out” issue when used in direct sun light. We improve the readability by increasing the luminance of the LCD.

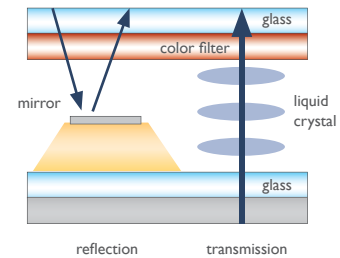
- Up to 1500 nits luminance
- Designed for operation in direct sunlight



Transfletive LCD Design

An inner mirror design on each TFT cell, resulting in high light reflectance.

- Achieved reflectance up to 20%
- Ideal for outdoor application



Natural Color Matrix

Natural Color Matrix delivers true color fidelity using a hardware-based color transforming algorithm to render vivid color, crisp text and artifact-free video that are true to the source data.



Long-life LED Backlight

Some units have field replacable LED backlights, some units have minimum life of 60K hours.

Key advantages of LED backlights are:

- No warm-up time, LEDs are instantly on
- High voltage inverter not needed, improved EMI performance
- Lower power consumption
- Larger dimming ratio, easy dimming control
- No mercury, enviromentally friendly

	5.7"	6.5"	8.4"	10.4"	12.1"	15.0"
VGA	○	○	○	○		
SVGA			○	○	○	
XGA			○	○	○	○



Wide Format (16: 9)

- Meets high definition display format
- Expands usable display area and allows more information on the screen



For more detail information, please vist our website: www.optrex.com

TFT LCD Display Line-up

Small Portable Size TFT

Size	Part #	Display Format	Contrast	Nits	Back-light	Interface	Viewing Angle	Operating Temp.	Special Features
1.9"	T-51909GD019J-LW-ACN	176 x 220	350:1	230	LED	CMOS	(h v):TBD	-20 to 70°C	
2.0	T-55040GD020JU-LW-AGN	240 X320	500:1	300	LED	CMOS	(h v): ±80 -70/80	-20 to 70°C	
2.2"	T-55458GD022J-LW-A-AAN	240 x 320	300:1	200	LED	CMOS	(h v): ±70 -50/70	-20 to 70°C	
3.0"	T-55149GD030J-MLW-AJN	240 x 400	105:1	400	LED	CMOS	(h v): ±70 -60/80	-20 to 70°C	
3.5"	T-51963GD035J-MLW-AFN	240 x 320	70:1	160	LED	CMOS	(h v): ±40 ±40	-20 to 70°C	
	T-51963GD035J-MLW-AGN	240 x 320	70:1	130	LED	CMOS	(h v): ±40 ±40	-20 to 70°C	
	T-51963GD035J-MLW-AHN	320 x 240	70:1	160	LED	CMOS	(h v): ±40 ±40	-20 to 70°C	
	T-55343GD035JU-LW-ADN	320 x 240	700:1	400	LED	CMOS	(h v): ±80 ±80	-20 to 70°C	
	T-55343GD035JU-LW-AEN	320 x 240	700:1	400	LED	CMOS	(h v): ±80 ±80	-20 to 70°C	
4.3"	T-55226D043J-LW-A-AAN	800 x 480	400:1	200	LED	CMOS	(h v): ±65 -65/45	-20 to 70°C	
5.0"	T-55382GD050JU-LW-A-AAN	800 x 480	500:1	320	LED	CMOS	(h v): ±65 -45/65	-20 to 70°C	
	T-55382GD050JU-LW-A-ABN	800 x 480	500:1	400	LED	CMOS	(h v): ±65 -45/65	-20 to 70°C	
	T-55423GD050J-LW-A-AAN	800 x 480	500:1	200	LED	CMOS	(h v): ±85 ±85	-20 to 60°C	
	T-55423GD050J-LW-A-ABN	800 x 480	600:1	300	LED	CMOS	(h v): ±85 ±85	-20 to 60°C	
	T-55583GD050J-LW-A-AAN	800 x 480	900:1	800	LED	CMOS	(h v): ±85 ±85	-20 to 80°C	
5.7"	T-55264GD057J-FW-ABN	320 x 240	350:1	500	CCFL	CMOS	(h v): ±70 ±70	-20 to 70°C	
	T-55264GD057J-FW-ADN	320 x 240	350:1	400	CCFL	CMOS	(h v): ±70 ±70	-20 to 70°C	
	T-55265GD057J-LW-ABN	320 x 240	350:1	500	LED	CMOS	(h v): ±70 ±70	-20 to 70°C	
	T-55265GD057J-LW-ACN	320 x 240	350:1	400	LED	CMOS	(h v): ±70 ±70	-20 to 70°C	
	AA057VF02	640 x 480	600:1	400	LED	CMOS	(h v): ±80 -60/80	-20 to 70°C	
	AA057VG02	640 x 480	185:1	250	LED	CMOS	(h v): ±70 -60/70	-20 to 70°C	

Legend: Natural Color Matrix Ultra Wide Viewing High Luminance Anti-reflective Coating Transflective Wide Format Touch Screen

TFT LCD Display Line-up

Industrial Size TFT - CCFL backlights

Size	Part #	Display Format	Contrast	Nits	Backlight	Interface	Viewing Angle	Operating Temp.	Special Features
6.5"	T-51750GD065J-FW-ADN	640 x 480	300:1	400	CCFL	CMOS	(h v): ±55 30/-60	-25 to 75°C	
	T-51750GD065J-FW-AFN	640 x 480	300:1	400	CCFL	CMOS	(h v): ±55 30/-60	-25 to 75°C	
	T-51750GD065J-FW-APN	640 x 480	300:1	320	CCFL	CMOS	(h v): ±55 30/-60	-20 to 70°C	
	T-51952D065J-FW-A-ADN	640 x 480	700:1	600	CCFL	CMOS	(h v): ±80 -60/80	-20 to 70°C	
	T-51952D065J-FW-A-AEN	640 x 480	750:1	600	CCFL	CMOS	(h v): ±80 -60/80	-20 to 70°C	
8.4"	T-55399D084J-FW-A-ABN	640 x 480	600:1	480	CCFL	CMOS	(h v): ±80 -60/80	-30 to 80°C	
	T-55399D084J-FW-A-ACN	640 x 480	600:1	480	CCFL	CMOS	(h v): ±80 -60/80	-30 to 80°C	
	T-55151FD084J-MFW-A-AAN	640 x 480	200:1	200	CCFL	CMOS	(h v): ±80 -70/50	-20 to 70°C	
	T-55308D084J-FW-A-AAN	800 x 600	600:1	400	CCFL	LVDS	(h v): ±80 -60/80	-20 to 70°C	
10.4"	T-51513D104JU-FW-A-AIN	640 x 840	500:1	430	CCFL	CMOS	(h v): ±65 -45/65	-20 to 70°C	
	T-51513D104JU-FW-A-AHN	640 x 840	600:1	430	CCFL	CMOS	(h v): ±60 -45/65	-20 to 70°C	
	T-51513D104J-FW-A-AJN	640 x 480	500:1	430	CCFL	CMOS	(h v): ±65 -65/45	-20 to 70°C	
	T-55334GD104J-FW-A-AAN	640 x 480	700:1	1500	CCFL	CMOS	(h v): ±70 -65/65	-20 to 70°C	
	T-55333GD104J-FW-A-AAN	640 x 480	600:1	500	CCFL	CMOS	(h v): ±70 -65/65	-20 to 70°C	
	T-55320GD104J-FW-A-AAN	640 x 480	600:1	500	CCFL	CMOS	(h v): ±70 -65/65	-20 to 70°C	
	T-51944D104J-FW-A-AA	800 x 600	500:1	400	CCFL	LVDS	(h v): ±70 -60/50	-20 to 70°C	
	T-51944D104J-FW-A-ABN	800 x 600	600:1	400	CCFL	LVDS	(h v): ±65 -60/50	-20 to 70°C	
	T-55225D104J-FW-A-AAN	1024 x 768	500:1	400	CCFL	LVDS	(h v): ±80 -65/65	-20 to 70°C	
	T-55225D104J-FW-A-ABN	1024 x 768	600:1	400	CCFL	LVDS	(h v): ±80 -65/65	-20 to 70°C	

Legend: Natural Color Matrix Ultra Wide Viewing High Luminance Anti-reflective Coating Transflective Wide Format Touch Screen

TFT LCD Display Line-up

Industrial Size TFT -CCFL Backlights (continued)

Size	Part #	Display Format	Contrast	Nits	Back-light	Inter-face	Viewing Angle	Operating Temp.	Special Features
12.1" S	T-51512D121J-FW-A-AIN	800 x 600	600:1	450	CCFL	CMOS	(h v): ±80 -80/60	-30 to 80°C	NCM
	T-51512D121J-FW-A-AGN	800 x 600	500:1	400	CCFL	CMOS	(h v): ±60 -75/45	-20 to 70°C	NCM
	T-51866D121J-FW-A-ACN	800 x 600	600:1	450	CCFL	LVDS	(h v): ±80 -80/60	-30 to 80°C	NCM
	T-51866D121J-FW-A-ABN	800 x 600	600:1	400	CCFL	LVDS	(h v): ±60 -75/45	-20 to 70°C	NCM
	T-52017D121J-FW-A-AAN	800 x 600	650:1	1000	CCFL	LVDS	(h v): ±65 -75/45	-20 to 70°C	NCM
	T-52017D121J-FW-A-ABN	800 x 600	700:1	1000	CCFL	LVDS	(h v): ±60 -75/45	-20 to 70°C	NCM
	T-55196D121J-FW-A-AAN	800 x 600	650:1	1500	CCFL	LVDS	(h v): ±65 -75/45	-20 to 70°C	NCM
	T-55196D121J-FW-A-ABN	800 x 600	700:1	1500	CCFL	LVDS	(h v): ±60 -75/45	-20 to 70°C	NCM
12.1" X	T-51756D121J-FW-A-ACN	1024 x 768	550:1	320	CCFL	LVDS	(h v): ±65 -75/45	-20 to 70°C	NCM
	T-51756D121J-FW-A-ADN	1024 x 768	600:1	320	CCFL	LVDS	(h v): ±60 -75/45	-20 to 70°C	NCM
	T-55105D121J-FW-A-AAN	1024 x 768	600:1	1000	CCFL	LVDS	(h v): ±65 -75/45	-20 to 70°C	NCM
	T-55105D121J-FW-A-ABN	1024 x 768	700:1	1000	CCFL	LVDS	(h v): ±60 -75/45	-20 to 70°C	NCM
15"	T-51863D150J-FW-A-AA	1024 x 768	450:1	250	CCFL	LVDS	(h v): ±75 -60/50	-20 to 70°C	NCM
	T-51863D150J-FW-A-AE	1024 x 768	450:1	450	CCFL	LVDS	(h v): ±75 -60/50	-20 to 70°C	NCM
	T-51863D150J-FW-A-AFN	1024 x 768	600:1	800	CCFL	LVDS	(h v): ±75 -60/50	-20 to 70°C	NCM
	T-55335D150J-FW-A-AAN	1024 x 768	650:1	1500	CCFL	LVDS	(h v): ±75 -60/50	-20 to 70°C	NCM
17"	T-55535D170J-FW-A-AA	1280 x 1024	700:1	500	CCFL	LVDS	(h v): ±80 -80/60	-20 to 70°C	NCM

Legend: Natural Color Matrix Ultra Wide Viewing High Luminance Anti-reflective Coating Transflective Wide Format Touch Screen

TFT LCD Display Line-up

TFT LCD with LED Backlighting

Size	Part #	Display Format	Contrast	Nits	Interface	Viewing Angle	Operating Temp.	Special Features
6.5"	T-51750GD065J-LW-ANN	640 x 480	300:1	600	CMOS	(h v): ±55 -60/30	-25 to 75°C	
	T-51750GD065J-LW-AQN	640 x 480	300:1	600	CMOS	(h v): ±55 -60/30	-20 to 70°C	
	T-51750GD065J-LW-AON	640 x 480	300:1	750	CMOS	(h v): ±55 -60/30	-20 to 70°C	
	T-55465D065J-LW-A-AAN	640 x 480	600:1	700	CMOS	(h v): ±80 -60/80	-30 to 80°C	
	T-55465D065J-LW-A-ABN	640 x 480	600:1	700	CMOS	(h v): ±80 -60/80	-30 to 80°C	
	T-55629D065J-LW-A-AAN	640 x 480	600:1	700	LVDS	(h v): ±80 -60/80	-30 to 80°C	
8.4"	T-55467D084J-LW-A-AAN	640 x 480	600:1	800	CMOS	(h v): ±80 -60/80	-30 to 80°C	
	T-55466D084J-LW-A-AAN	800 x 600	600:1	600	LVDS	(h v): ±80 -60/80	-30 to 80°C	
	T-55549D084J-LW-A-AAN	1024 x 768	600:1	500	LVDS	(h v): ±80 -60/80	-30 to 80°C	
10.4"	T-55532D104J-LW-A-AAN	640 x 480	700:1	800	CMOS	(h v): ±70 ±65	-20 to 70°C	
	T-55532D104J-LW-A-ABN	640 x 480	700:1	800	CMOS	(h v): ±70 ±65	-20 to 70°C	
	T-55532D104J-LW-A-ACN	640 x 480	700:1	1500	CMOS	(h v): ±70 ±65	-20 to 70°C	
	T-55532D104J-LW-A-ADN	640 x 480	700:1	1500	CMOS	(h v): ±70 ±65	-20 to 70°C	
	T-55563D104J-LW-A-AAN	800 x 600	700:1	700	LVDS	(h v): ±80 -60/80	-30 to 80°C	
	T-55563D104J-LW-A-ABN	800 x 600	700:1	1200	LVDS	(h v): ±80 -60/80	-30 to 80°C	
	T-55533D104J-LW-A-AAN	1024 x 768	700:1	600	LVDS	(h v): ±80 ±65	-30 to 80°C	
	T-55533D104J-LW-A-ABN	1024 x 768	700:1	1000	LVDS	(h v): ±80 ±65	-30 to 80°C	
	T-55586D104J-LW-A-AAN	1024 x 768	700:1	1000	LVDS	(h v): ±80 ±65	-30 to 80°C	
12.1"	T-55373D121J-LW-A-AAN	800 x 600	500:1	550	CMOS	(h v): ±80 -60/80	-20 to 70°C	
	T-55374D121J-LW-A-AAN	800 x 600	500:1	550	LVDS	(h v): ±80 -60/80	-20 to 70°C	
	T-55513D121J-LW-A-AAN	1024 x 768	600:1	500	LVDS	(h v): ±80 -60/80	-30 to 80°C	
	T-55566D121J-LW-A-AAN	1024 x 768	600:1	1000	LVDS	(h v): ±80 -60/80	-30 to 80°C	
15.0"	T-55534D150J-LW-A-AAN	1024 x 768	600:1	800	LVDS	(h v): ±80 -80/60	-20 to 70°C	
	T-55534D150J-LW-A-ABN	1024 x 768	600:1	1500	LVDS	(h v): ±80 -80/60	-20 to 70°C	
	T-55519D150J-LW-A-AAN	1024 x 768	600:1	350	LVDS	(h v): ±85 ±85	-20 to 70°C	
	T-55519D150J-LW-A-ABN	1024 x 768	600:1	1100	LVDS	(h v): ±85 ±85	-20 to 70°C	

Legend:



Natural Color Matrix



Ultra Wide Viewing



High Luminance



Anti-reflective Coating



Transflective



Wide Format



Touch Screen

TFT LCD Display Line-up

Wide Format TFTs (16:9) - Both LED & CCFL Types

Size	Part #	Display Format	Back-light	Con- trast	Nits	Inter- face	Viewing Angle	Operating Temp.	Special Features
9.0"W	T-55561D090J-LW-A-AAN	800x 480	LED	900:1	400	LVDS	(h v): ±85 ±85	-30 to 80°C	NCM SWV
	T-55561D090J-LW-A-ABN	800x 480	LED	900:1	320	LVDS	(h v): ±85 ±85	-20 to 70°C	NCM SWV
	T-55562D090J-LW-A-AAN	800x 480	LED	800:1	800	LVDS	(h v): ±80 -60/80	-20 to 70°C	NCM
	T-55562D090J-LW-A-ABN	800x 480	LED	700:1	640	LVDS	(h v): ±80 -60/80	-20 to 70°C	NCM
	T-55311D090J-FW-A-AAN	800 x 480	CCFL	600:1	600	LVDS	(h v): ±75 -60/80	-20 to 70°C	NCM
	T-55311D090J-FW-A-ABN	800 x 480	CCFL	600:1	600	LVDS	(h v): ±80 -60/80	-20 to 70°C	NCM
	T-55311D090J-FW-A-ACN	800 x 480	CCFL	600:1	800	LVDS	(h v): ±80 -60/80	-20 to 70°C	NCM
12.1"W	T-55592D121J-LW-A-AAN	1280 x 800	LED	700:1	700	LVDS	(h v): ±80 -60/80	-30 to 80°C	NCM
	T-55312D121J-FW-A-ABN	1280 x 800	CCFL	500:1	400	LVDS	(h v): ±80 -60/80	20 to 70°C	NCM
	T-55526D121J-FW-A-AAN	1280 x 800	CCFL	600:1	400	LVDS	(h v): ±80 -60/80	-20 to 70°C	NCM
14.1"W	T-55313D141J-FW-A-ABN	1280 x 800	CCFL	700:1	400	LVDS	(h v): ±80 -80/70	-20 to 70°C	NCM
	T-55313D141J-FW-A-AEN	1280 x 800	CCFL	700:1	1000	LVDS	(h v): ±80 -70/80	-20 to 70°C	NCM
17.5"W	T-55336D175J-FW-A-AAN	1280 x 768	CCFL	500:1	400	LVDS	(h v): ±75 -60/50	-20 to 70°C	NCM

Legend:

- Natural Color Matrix
- Ultra Wide Viewing
- High Luminance
- Anti-reflective Coating
- Transflective
- Wide Format
- Touch Screen

Outdoor Use TFT LCD Display Line-up

Super High Luminance (Brightness > 1000 nits)

Size	Part #	Display Format	Contrast	Nits	Back-light	Interface	Viewing Angle	Operating Temp.	Special Features
10.4"	T-55334D104J-FW-A-AAN	640 x 480	700:1	1500	CCFL	CMOS	(h v): ±70 -65/65	-20 to 70°C	
	T-55532D104J-LW-A-ACN	640 x 480	700:1	1500	LED	CMOS	(h v): ±70 -65/65	-20 to 70°C	
	T-55532D104J-LW-A-ADN	640 x 480	700:1	1500	LED	CMOS	(h v): ±70 -65/65	-20 to 70°C	
	T-55563D104J-LW-A-ABN	800 x 600	700:1	1200	LED	LVDS	(h v): ±80 -60/80	-30 to 80°C	
	T-55533D104J-LW-A-ABN	1024 x 768	700:1	1000	LED	LVDS	(h v): ±80 -60/80	-30 to 80°C	
	T-55586D104J-LW-A-AAN	1024 x 768	700:1	1000	LED	LVDS	(h v): ±80 -65/65	-30 to 80°C	
12.1" S	T-52017D121J-FW-A-AAN	800 x 600	650:1	1000	CCFL	LVDS	(h v): ±65 -75/45	-20 to 70°C	
	T-52017D121J-FW-A-ABN	800 x 600	700:1	1000	CCFL	LVDS	(h v): ±60 -75/45	-20 to 70°C	
	T-55196D121J-FW-A-AAN	800 x 600	650:1	1500	CCFL	LVDS	(h v): ±65 -75/45	-20 to 70°C	
	T-55196D121J-FW-A-ABN	800 x 600	700:1	1500	CCFL	LVDS	(h v): ±60 -75/45	-20 to 70°C	
12.1" X	T-55566D121J-LW-A-AAN	1024 x 768	600:1	1000	LED	LVDS	(h v): ±80 -80/60	-30 to 80°C	
	T-55105D121J-FW-A-AAN	1024 x 768	600:1	1000	CCFL	LVDS	(h v): ±65 -75/45	-20 to 70°C	
	T-55105D121J-FW-A-ABN	1024 x 768	700:1	1000	CCFL	LVDS	(h v): ±60 -75/45	-20 to 70°C	
15.0"	T-55335D150J-FW-A-AAN	1024 x 768	650:1	1500	CCFL	LVDS	(h v): ±75 -60/50	-20 to 70°C	
	T-55534D150J-LW-A-ABN	1024 x 768	600:1	1500	LED	LVDS	(h v): ±80 -60/80	-20 to 70°C	
	T-55519D150J-LW-A-ABN	1024 x 768	600:1	1100	LED	LVDS	(h v): ±85 ±85	-20 to 70°C	

Legend:



Natural Color Matrix



Ultra Wide Viewing



High Luminance



Anti-reflective Coating



Transflective



Wide Format



Touch Screen

Transflective TFT LCD

Size	Part #	Display Format	Contrast	Nits	Back-light	Interface	Viewing Angle	Operating Temp.	Special Features
3.0"	T-55149GD030J-MLW-AJN	240 x 480	105:1	400	LED	CMOS	(h v): ±70 -60/80	-20 to 70°C	
3.5"	T-51963GD035J-MLW-AFN	240 x 320	70:1	160	LED	CMOS	(h v): ±40 -40/40	-20 to 70°C	
	T-51963GD035J-MLW-AGN	240 x 320	70:1	130	LED	CMOS	(h v): ±40 -40/40	-20 to 70°C	
	T-51963GD035J-MLW-AHN	320 x 240	70:1	160	LED	CMOS	(h v): ±70 -40/40	-20 to 70°C	
5.7"	AA057VG02	640 x 480	185:1	400	LED	CMOS	(h v): ±70 -60//70	-20 to 70°C	
8.4"	T-55151FD084J-MFW-A-AAN	640 x 480	200:1	200	CCFL	CMOS	(h v): ±80 -70/50	-20 to 70°C	

Resistive Touch Screen Solution

Part #	Display Format	Contrast	Nits	Interface	Viewing Angle	Operating Temp.	Special Features
3.5"	T-51963GD035J-MLW-AGN	240 x 320	70:1	130	CMOS	(h v): ±40 ±40	-20 to 70°C
	T-55343GD035JU-LW-AEN	320 x 240	700:1	400	CMOS	(h v): ±80 ±80	-20 to 70°C
5.0"	T-55423GD050J-LW-A-AAN	800 x 480	500:1	200	CMOS	(h v): ±85 ±85	-20 to 70°C
	T-55382GD050JU-LW-A-AAN	800 x 480	500:1	320	CMOS	(h v): ±65 -45/65	-20 to 70°C
5.7"	T-55264GD057J-FW-ADN	320 x 240	350:1	400	CMOS	(h v): ±70 ±70	-20 to 70°C
	T-55265GD057J-LW-ACN	320 x 240	350:1	400	CMOS	(h v): ±70 ±70	-20 to 70°C
6.5"	T-51750GD065J-FW-APN	640 x 480	300:1	320	CMOS	(h v): ±55 -60/30	-20 to 70°C
	T-51750GD065J-LW-AQN	640 x 480	300:1	600	CMOS	(h v): ±55 -60/30	-20 to 70°C
9.0"	T-55562D090J-LW-ABN	800 x 480	700:1	640	LVDS	(h v): ±80 -60/80	-20 to 70°C
	T-55561D090J-LW-A-ABN	800 x 480	900:1	320	LVDS	(h v): ±85 ±85	-20 to 70°C

More touch Screen custom solutions are available, please contact us for details.

Legend:	Natural Color Matrix	Ultra Wide Viewing	High Luminance	Anti-reflective Coating	Transflective	Wide Format	Touch Screen
----------------	----------------------	--------------------	----------------	-------------------------	---------------	-------------	--------------

Quickstart Your Design with LCD ToolKITs™

Optrex LCD ToolKITs provide a convenient solution that speeds design and saves engineering and procurement time. The LCD module and all interface components the designer needs are conveniently supplied in a single box.



*It's all
in the Box*

LCD ToolKITs include:

- The TFT-LCD display panel
- TFT controller board with on-screen display
- A backlight inverter board / or LED driver board for LED backlit
- TFT-LCDs and power cable
- 12V DC power supply and AC line cord
- SVGA (analog RGB) cable
- DVI (digital input) cable
- Video input cable

The Optrex LCD ToolKIT is real plug-and play solution that provides you with everything you need to reduce design cycle time, you will be able to light up the display in minutes.



TFT Panel



TFT Controller Board



VGA (Analog RGB) Cable



DVI (Digital) Video Cable



Backlight Inverter



12V DC Power Supply

Delivery High Quality Products for Industrial Customers

Quality Certifications

- TS 16949 (Automotive Standard)
- VDA-6 (European Automotive Quality Standard)
- ISO Series
- ISO 14000
- QS 9000



Take the Next Step...

Detailed Product Information
www.optrex.com/products/tft.asp

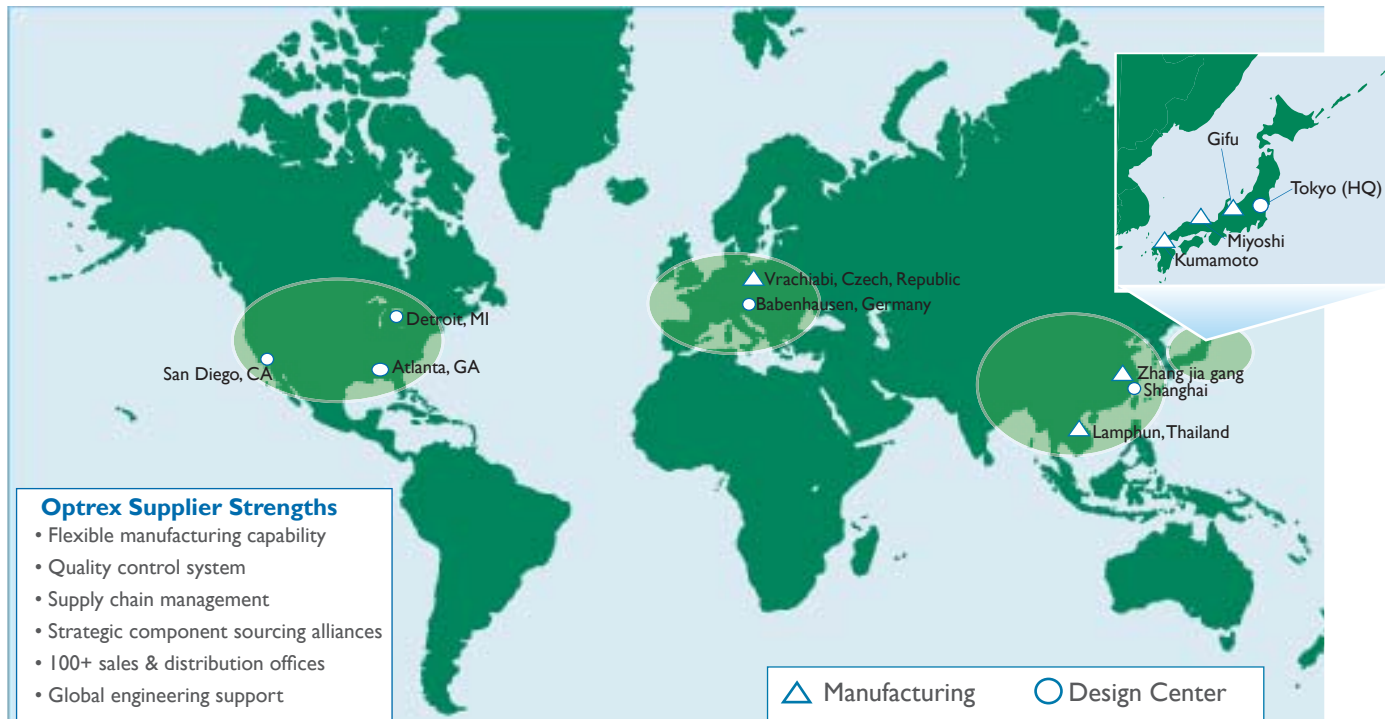
Request a Product Quote
www.optrex.com/products/quote.asp

Contact a Representative in your area
www.optrex.com/contacts

Engineering Resources
www.optrex.com/engineering

Manufacturing and Global Support

Optrex flat panel displays are produced using a network of 14 manufacturing and design centers throughout the world.



Optrex America, Inc. Headquarters



Detroit (Plymouth), Michigan

OPTREX AMERICA, INC.

Michigan Office
 46723 Five Mile Road
 Plymouth, Michigan 48170
 TEL: +1-734-416-8500
 FAX: +1-734-416-8520
<http://www.optrex.com>

Atlanta Office
 2750 Premiere Parkway Suite 300
 Duluth, GA 30097
 TEL: +1-770-622-2146
 FAX: +1-770-622-2147

San Diego Office
 6727 Flanders Drive, Suite 212
 San Diego, CA 92121
 TEL: +1-858-552-2670
 FAX: +1-858-552-2677

Optrex Europe GmbH Headquarters



Babenhausen, Germany

OPTREX EUROPE GmbH

Seligenstaedter Str. 40
 64832 Babenhausen, Germany
 TEL: +49-6073-7210
 FAX: +49-6073-721-230
<http://www.optrex.de>

Released Aug. 2010 | Copyright © 1998-2010 Optrex America, Inc.

These specifications are subject to change without notice. Please check with OPTREX prior to designing equipment using this information.

* RoHS compliance is based upon Optrex America's understanding of RoHS and Optrex America's knowledge of the materials used by the manufacturer in its products.

All trademarks are the property of their respective owners.