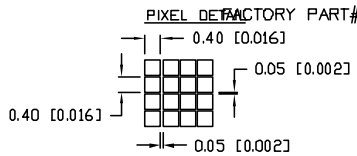


UNCONTROLLED DOCUMENT COMPANY CONFIDENTIAL

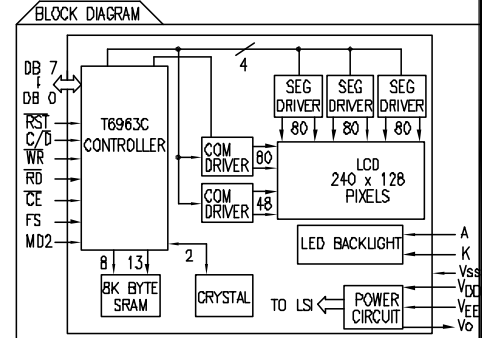
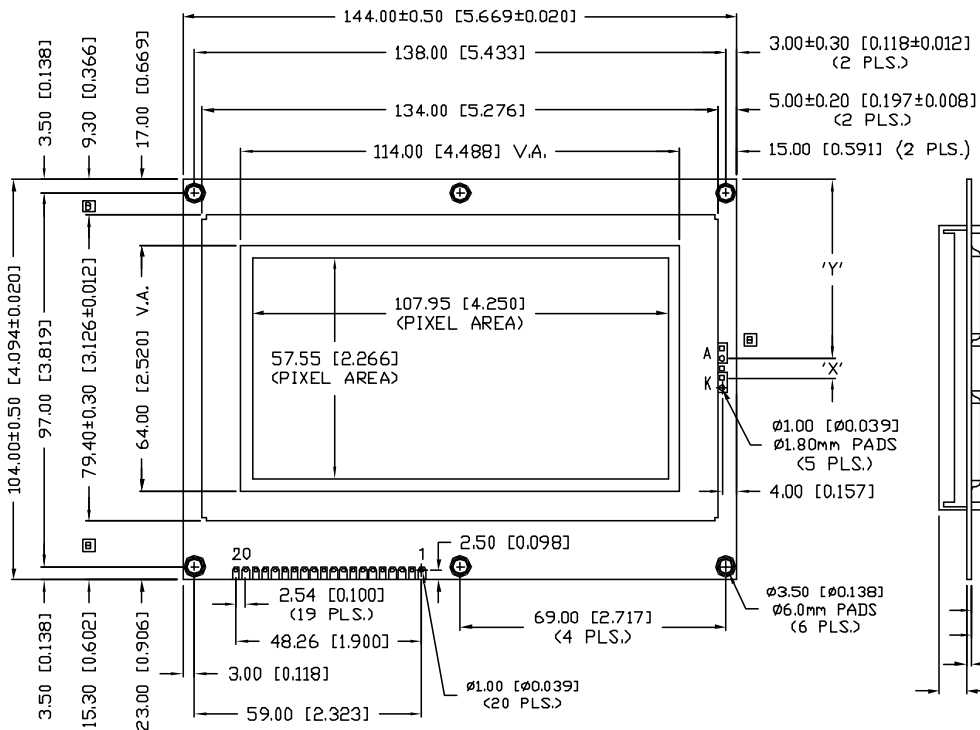
PART NUMBER
LCM-X240128GXX(-X)

REV.
C

P/N PREFIX/SUFFIX TABLE		
LCM-X	GXX	DESCRIPTION
STANDARD	S	SR STN, REFLECTIVE
		SF STN, TRANSFLECTIVE W/LED BACKLIGHT
HIGH TEMP.	H	WF-C FSTN, TRANSFLECTIVE W/CCFL BACKLIGHT
		WF-L FSTN, TRANSFLECTIVE W/WHITE EL BACKLIGHT



REV.	E.C.N. NUMBER AND REVISION COMMENTS	DATE
A	E.C.N. #10BRDR. & REDRAWN.	9.10.98
B	E.C.N. #10516.	5.10.99
C	E.C.N. #10BRDR. & #10969.	3.14.03



TYPE	DIM.	A	B*	B**	X	Y
REFLECTIVE OR EL	5.2	3.5	8.4	15.24	41.38	
LED	10	3.5	8.4	5.08	46.46	
CCFL	10	3.5	8.4	-	-	

B*: WITHOUT NV+TC.
B**: WITH NV+TC.
NV-NEGATIVE VOLTAGE SUPPLY
TC-TEMPERATURE COMPENSATION

CAUTION: STATIC SENSITIVE DEVICE.
FOLLOW PROPER E.S.D. HANDLING PROCEDURES
WHEN WORKING WITH THIS PART.

*UNLESS OTHERWISE SPECIFIED TOLERANCES PER DECIMAL PRECISION ARE: X=±1 (±0.039), XX=±0.5 (±0.020), XXX=±0.25 (±0.010), XXXX=±0.127 (±0.005). LEAD SIZE=±0.05 (±0.002), LEAD LENGTH=±0.75 (±0.030), MIN-DECIMAL PRECISION MAX.=+0.00 -DECIMAL PRECISION

REV.	PART NUMBER
C	LCM-X240128GXX(-X)
240 x 128 DOT MATRIX GRAPHIC MODULE, 1/128 DUTY.	

CONFIDENTIAL INFORMATION
THE INFORMATION CONTAINED IN THIS DOCUMENT IS THE PROPERTY OF LUMEX INC. EXCEPT AS SPECIFICALLY AUTHORIZED IN WRITING BY LUMEX INC., THE HOLDER OF THIS DOCUMENT SHALL KEEP ALL INFORMATION CONTAINED HEREIN CONFIDENTIAL AND SHALL PROTECT SAME IN WHOLE OR IN PART FROM DISCLOSURE AND DISSEMINATION TO ALL THIRD PARTIES.

RELIABILITY NOTE
OUR MANY YEARS OF EXPERIENCE DATA ACCUMULATION INDICATE THAT SOLDER HEAT IS A MAJOR CAUSE OF EARLY AND FUTURE FAILURE. PLEASE PAY ATTENTION TO YOUR SOLDERING PROCESS.



290 E. HELEN ROAD
PALATINE, IL 60067-6976
PHONE: +1.847.359.2790
US WEB: www.lumex.com
TW WEB: www.lumex.com.tw

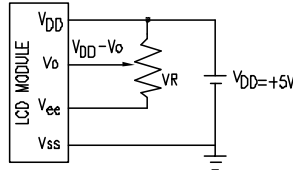
DRAWN BY: CT	CHECKED BY:	APPROVED BY:	DATE: 7.7.98
			PAGE: 1 OF 2
			SCALE: N/A

REV.	E.C.N. NUMBER AND REVISION COMMENTS	DATE
	SEE PAGE 1.	

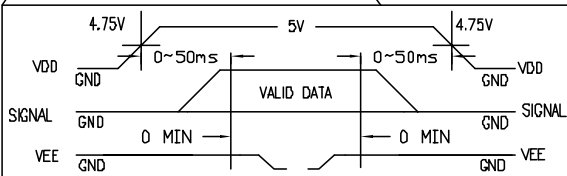
ABSOLUTE MAXIMUM RATINGS

ITEM	SYMBOL	MIN.	MAX.	UNIT
POWER SUPPLY FOR LOGIC	$V_{DD}-V_{SS}$	0	6.5	V
POWER SUPPLY FOR LCD DRIVING	$V_{DD}-V_{EE}$	0	22.0	V
INPUT VOLTAGE	V_I	V_{SS}	V_{DD}	V
STATIC ELECTRICITY			100	V

④ $V_{DD}-V_o$: LCD DRIVING VOLTAGE
 V_R : 10K Ω -20K Ω



TIMING OF POWER SUPPLY AND INTERFACE SIGNAL



PIN CONFIGURATION

PIN #	SYMBOL	LEVEL	FUNCTION
1	V_{SS}	-	GROUND (0V)
2	V_{DD}	-	POWER SUPPLY FOR LOGIC CIRCUIT
3	V_o	-	OPERATING VOLTAGE FOR LCD DRIVING
4	C/D	H/L	\overline{WR} ="L", C/D="H": COMMAND WRITE, "L": DATA WRITE \overline{RD} ="L", C/D="H": STATUS READ, "L": DATA READ
5	\overline{RD}	L	DATA READ
6	\overline{WR}	L	DATA WRITE
7~14	DB0~DB7	H/L	DATA BUS LINE
15	CE	L	CHIP ENABLE
16	RST	L	RESET
17	V_{ee}	-	POWER SUPPLY FOR LCD DRIVING
18	MD2	H/L	COLUMNS SELECT: "H": 32 COLUMNS, "L": 40 COLUMNS
19	FS	H/L	FONT SELECT: "H": 6*8 PIXEL/FONT, "L": 8*8 PIXEL/FONT
20	N.C.	-	
	A	-	POWER SUPPLY FOR LED BACKLIGHT (ANODE)
	K	-	POWER SUPPLY FOR LED BACKLIGHT (CATHODE)

OPTO-ELECTRICAL CHARACTERISTICS

ITEM	SYMBOL	STANDARD VALUE			UNIT		
		MIN.	TYP.	MAX.			
POWER SUPPLY VOLTAGE FOR LOGIC	$V_{DD}-V_{SS}$	+4.75	+5.0	+5.25	V		
NEGATIVE POWER SUPPLY VOLTAGE FOR LCD DRIVE	$V_{EE}-V_{SS}$	-15.5	-16.0	-16.5	V		
INPUT VOLTAGE: NOTE (1)	H LEVEL V_{IH}	2.2	-	-	V		
	L LEVEL V_{IL}	0	-	0.8	V		
OUTPUT VOLTAGE: NOTE (2)	H LEVEL V_{OH}	2.4	-	V_{DD}	V		
	L LEVEL V_{OL}	0	-	0.4	V		
POWER SUPPLY CURRENT FOR LOGIC:	NOTE (4) I_{DD}	-	12.0	-	mA		
POWER SUPPLY CURRENT FOR LCD DRIVE: NOTE (4)	I_{EE}	-	5.0	-	mA		
RECOMMENDED LCD DRIVING VOLTAGE: (NOTE 3)	$T_a=0^\circ\text{C}$	$V_{DD}-V_o$	-	+19.4	-	V	
	$T_a=25^\circ\text{C}$	$\phi=10^\circ\text{C}$	-	+18.5	-	V	
	$T_a=50^\circ\text{C}$	$e=0^\circ\text{C}$	-	+16.2	-	V	
CLOCK OSCILLATION FREQUENCY	f_{osc}	-	5	-	MHZ		
*LED BACKLIGHT	VOLTAGE	$f=900\text{mA}$	V_f	-	4.2	4.6	V
	CURRENT	-	I_f	-	900	-	mA
	POWER CONSUMPTION	-	PD	-	3.8	-	W
	LUMINOUS	$f=900\text{mA}$	L	60	-	-	cd/m ²
COLOR	-	-	-	574	-	nm	

*ONLY APPLIES TO MODULES WITH BACKLIGHT
 NOTE (1): APPLIED TO TERMINALS: FS, CE, \overline{WR} , \overline{RD} , C/D, DB0~DB7, \overline{RES} , MD2.
 NOTE (2): APPLIED TO TERMINALS: DB0~DB7.
 NOTE (3): RECOMMENDED LCD DRIVING VOLTAGE MAY FLUCTUATE ABOUT $\pm 1.0\text{V}$ BY EACH MODULE.
 NOTE (4): $V_{DD}-V_{SS}=5.0\text{V}$, $V_{DD}-V_o=20.6\text{V}$.

*UNLESS OTHERWISE SPECIFIED TOLERANCES PER DECIMAL PRECISION ARE: X= ± 1 (± 0.039), XX= ± 0.5 (± 0.020), XXX= ± 0.25 (± 0.010), XXXX= ± 0.127 (± 0.005). LEAD SIZE= ± 0.05 (± 0.002), LEAD LENGTH= ± 0.75 (± 0.030), MIN= $\frac{\text{DECIMAL PRECISION}}{1000}$, MAX.= $\frac{\text{DECIMAL PRECISION}}{100}$

REV.	PART NUMBER
C	LCM-X240128GXX(-X)

CONFIDENTIAL INFORMATION
 THE INFORMATION CONTAINED IN THIS DOCUMENT IS THE PROPERTY OF LUMEX INC. EXCEPT AS SPECIFICALLY AUTHORIZED IN WRITING BY LUMEX INC., THE HOLDER OF THIS DOCUMENT SHALL KEEP ALL INFORMATION CONTAINED HEREIN CONFIDENTIAL AND SHALL PROTECT SAME IN WHOLE OR IN PART FROM DISCLOSURE AND DISSEMINATION TO ALL THIRD PARTIES.



290 E. HELEN ROAD
 PALATINE, IL 60067-6976
 PHONE: +1.847.359.2790
 US WEB: www.lumex.com
 TW WEB: www.lumex.com.tw

240 x 128 DOT MATRIX GRAPHIC MODULE,
 1/128 DUTY.

RELIABILITY NOTE
 OUR MANY YEARS OF EXPERIENCE DATA ACCUMULATION INDICATE THAT SOLDER HEAT IS A MAJOR CAUSE OF EARLY AND FUTURE FAILURE. PLEASE PAY ATTENTION TO YOUR SOLDERING PROCESS.

DRAWN BY: CT	CHECKED BY:	APPROVED BY:	DATE: 7.7.98
			PAGE: 2 OF 2
			SCALE: N/A