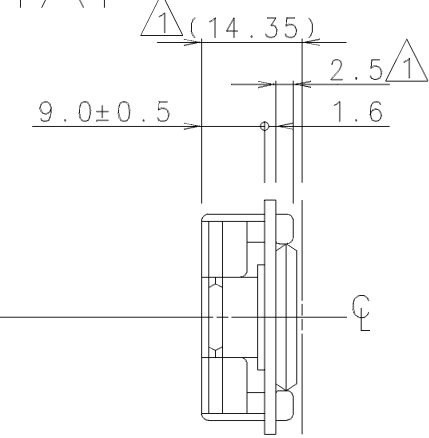
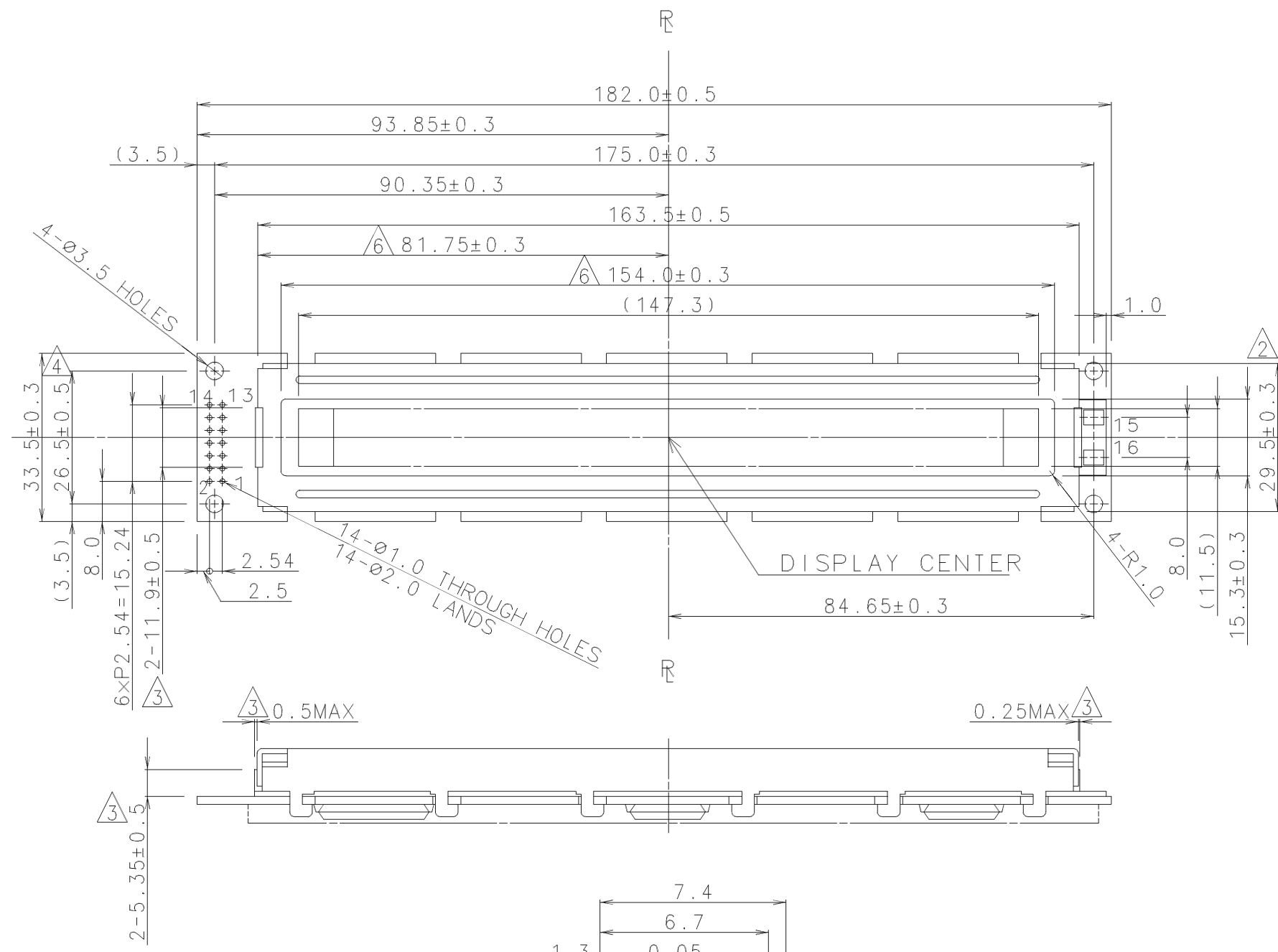


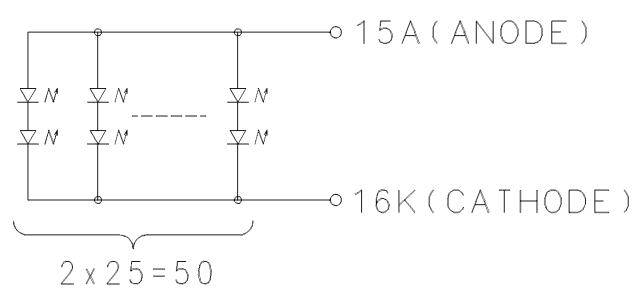


ISSUE	REVISIONS	DRAWN	APPROVED	DATE
1	Correction	N.Wada		FEB.27'89
2	Correction	N.Wada		MAR.08'89
3	Addition	N.Wada		MAY.18'89
4	Correction	N.Wada		JUN.29'89
5	Correction	D.Natsume		OCT.23'92
6	Correction	M.Minami		FEB.09'99

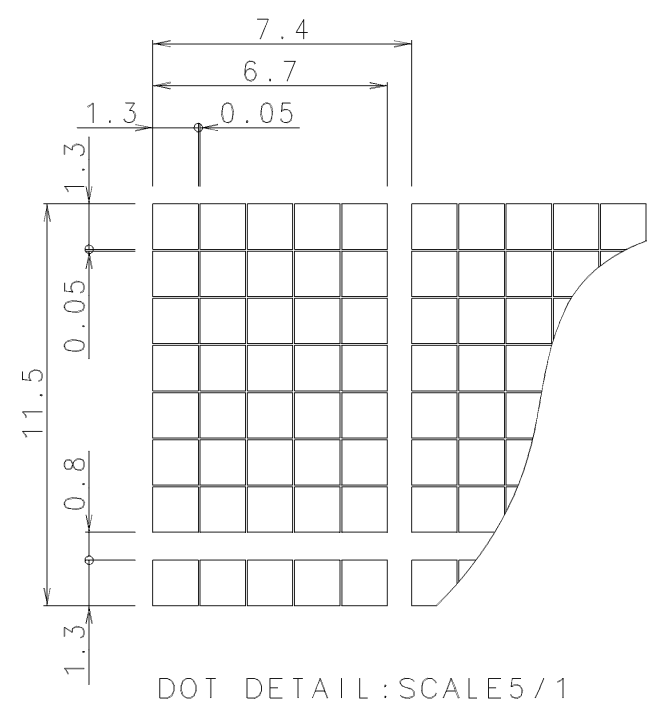


PIN ASSIGNMENT

PIN No.	SYMBOL	FUNCTION
1	V _{SS}	POWER SUPPLY GND (0V) FOR LOGIC(+5VTIP) FOR LC DRIVING
2	V _{CC}	
3	V _{EE}	
4	RS	REGISTER SELECT
5	R/W	DATA READ OR WRITE SELECT
6	E	ENABLE
7	DB0	DATA BUS LINE
8	DB1	
9	DB2	
10	DB3	
11	DB4	
12	DB5	
13	DB6	
14	DB7	
15	A	LED ANODE
16	K	LED CATHODE



LED CIRCUIT



DOT DETAIL: SCALE 5/1

TOLERANCE			THIRD ANGLE PROJECTION	DATE FEB.08'89	OPTREX CORPORATION	
MEASURE	A	B				C
L≤16	±0.1	±0.3	±1	UNIT mm	APPROVED T.Ohyama	
16<L≤63	±0.2	±0.5	±1.5	SCALE 1:1	TITLE DIMENSIONAL OUTLINE	
63<L≤250	±0.3	±0.8	±2		CHECKED A.Kamon	CODE DMC 20171 Series 5
250<L≤500	±0.5	±1.2	±3		DRAWN S.Saito	DWG NO UE-32425F
500<L	±0.8	±2	±4			
ANGLE	±1°	±5°	±10°			