

REMARKS : 1) * - REFER TO COVER PAGE

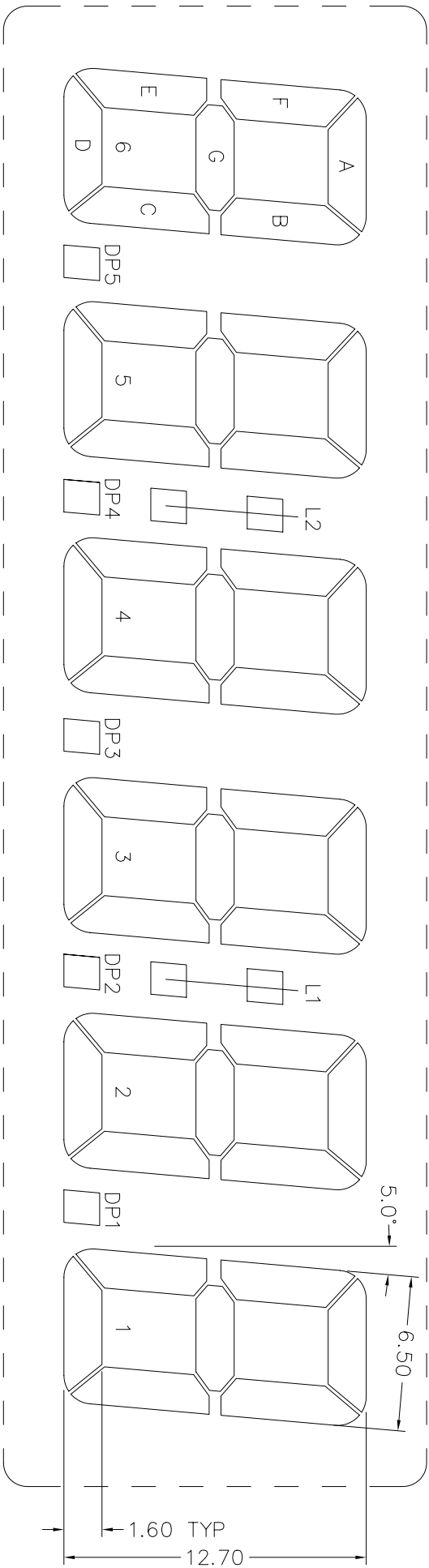
- 2) ** --- X.XX = 2.54 (FOR PIN LENGTH ≥ 3.20 & ≤ 10.00mm)
- *** ---- X.XX = 1.75 (FOR PIN LENGTH > 10.00 & ≤ 19.50mm)

VARITRONIX LTD.		3rd ANGLE PROJECTION	
DWG. NO. : VI-602-10	REV : 0	Dimension : mm	TOL : ±0.15 IF NOT SPECIFY
Drawn by : YIN		DD NOT SCALE DRAWING	
Checked by :		Date : 98/06/23	
		Date :	

PIN50

DWG.NO. : VI-602-1 (REV.0)

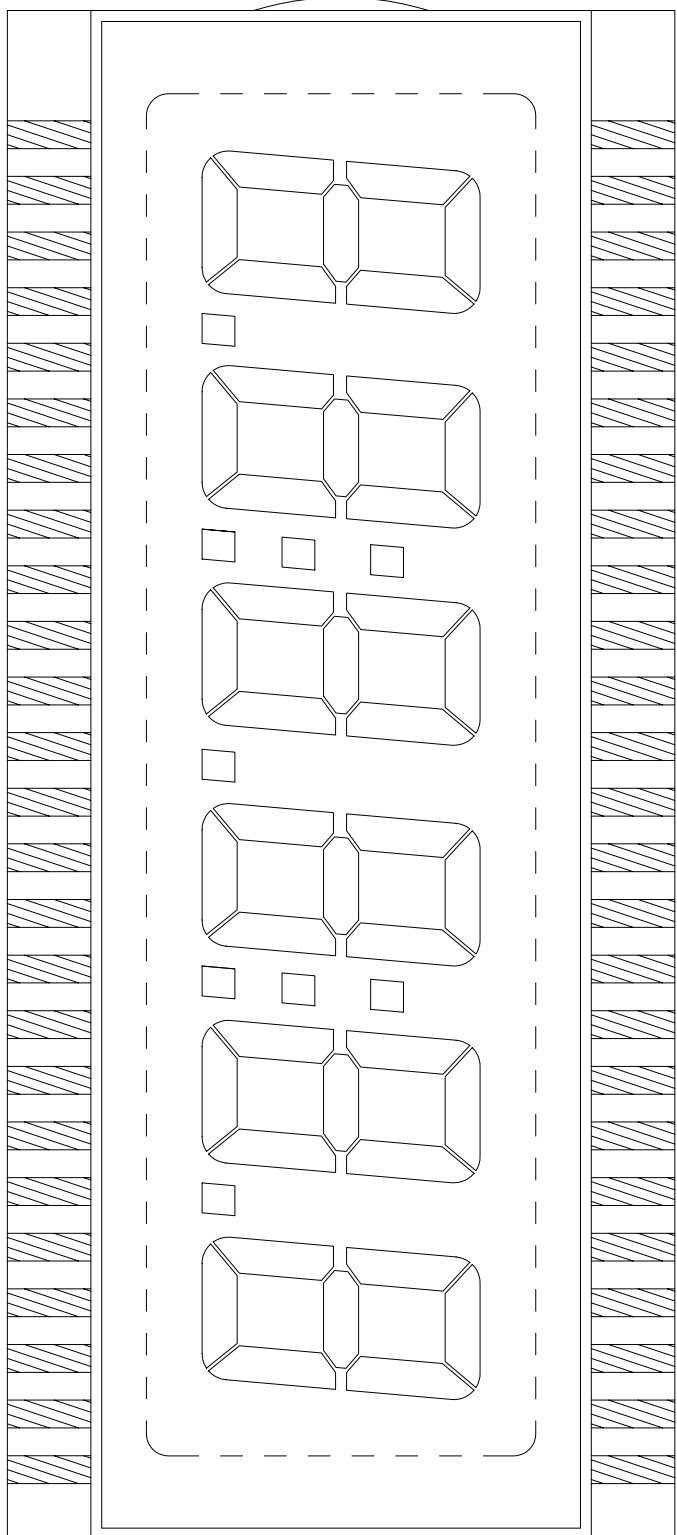
PIN26



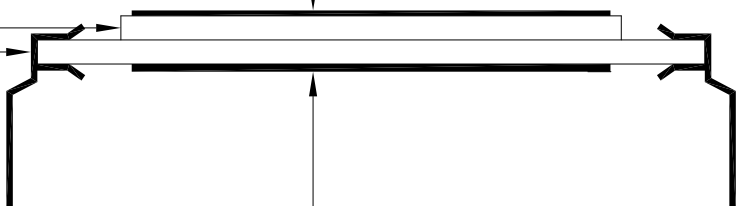
PIN1

PIN25

DWG.NO. : VI-602-1 (REV.0)



FRONT POLARIZER
FRONT GLASS
BACK GLASS
BACK POLARIZER



DWG.NO. : VI-602-1 (REV.0)

PIN	COM	PIN	COM
1	COM	26	1A
2	6E	27	1F
3	6D	28	1G
4	6C	29	2B
5	DP5	30	2A
6	5E	31	2F
7	5D	32	2G
8	5C	33	L1
9	DP4	34	3B
10	4E	35	3A
11	4D	36	3F
12	4C	37	3G
13	DP3	38	4B
14	3E	39	4A
15	3D	40	4F
16	3C	41	4G
17	DP2	42	L2
18	2E	43	5B
19	2D	44	5A
20	2C	45	5F
21	DP1	46	5G
22	1E	47	6B
23	1D	48	6A
24	1C	49	6F
25	1B	50	6G