

REMARKS :) * ----- REFER TO COVER PAGE

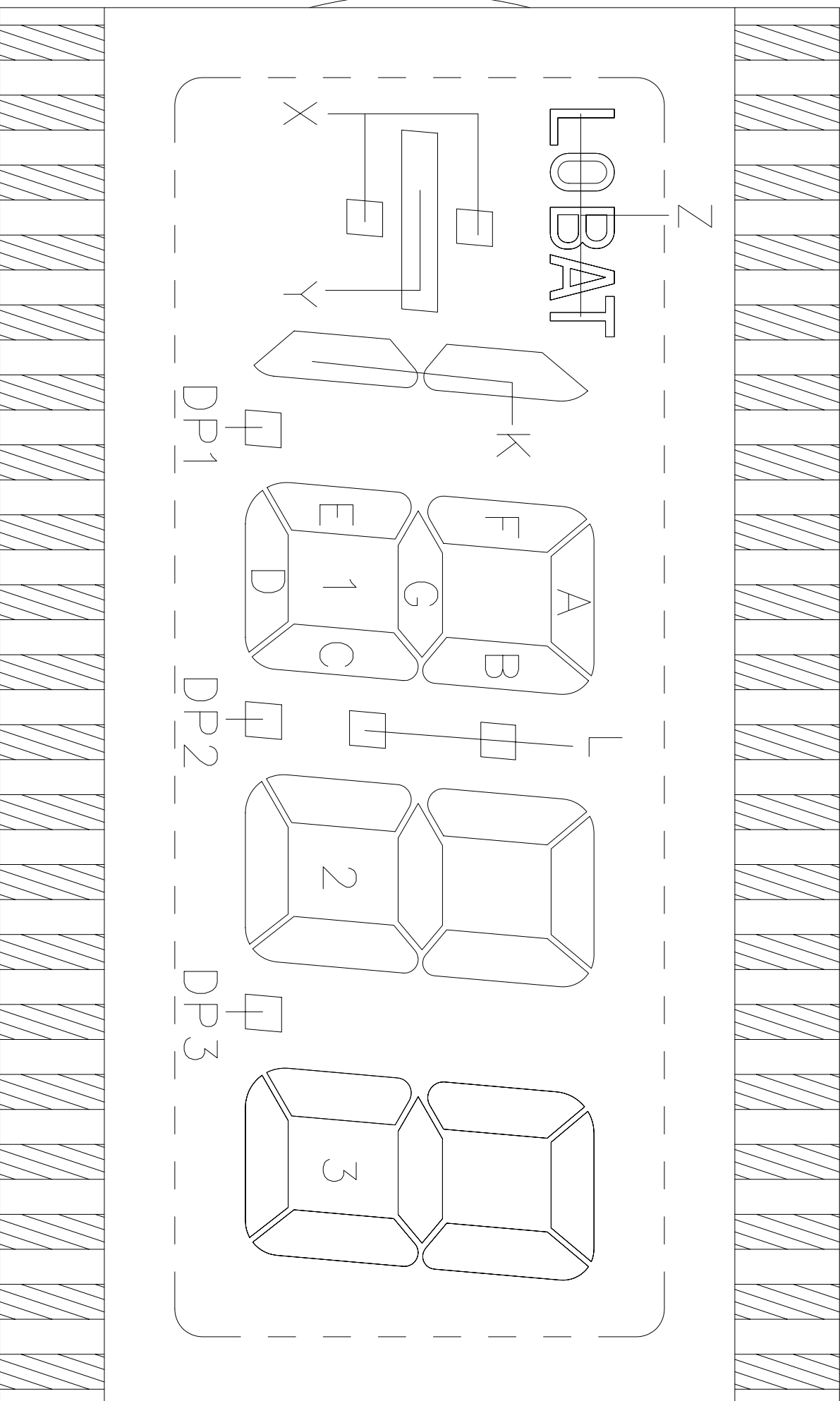
** ----- X.XX = 2.54 (FOR PIN LENGTH \geq 3.20 & \leq 10.00mm.)
 ** ----- X.XX = 1.75 (FOR PIN LENGTH $>$ 10.00 & \leq 19.50mm.)

DWG.ND : VI-302-10		REV : 10	
VARITRONIX LTD.		Dimension : mm	
Drawn by : YAN		TOL : ± 0.15 IF NOT SPECIFY	
Checked by :		DO NOT SCALE DRAWING	
Date :		Date : 98/10/23	
		3rd ANGLE PROJECTION	

PIN40

DWG.NO.: VI-302-1 (REV.0)

PIN21

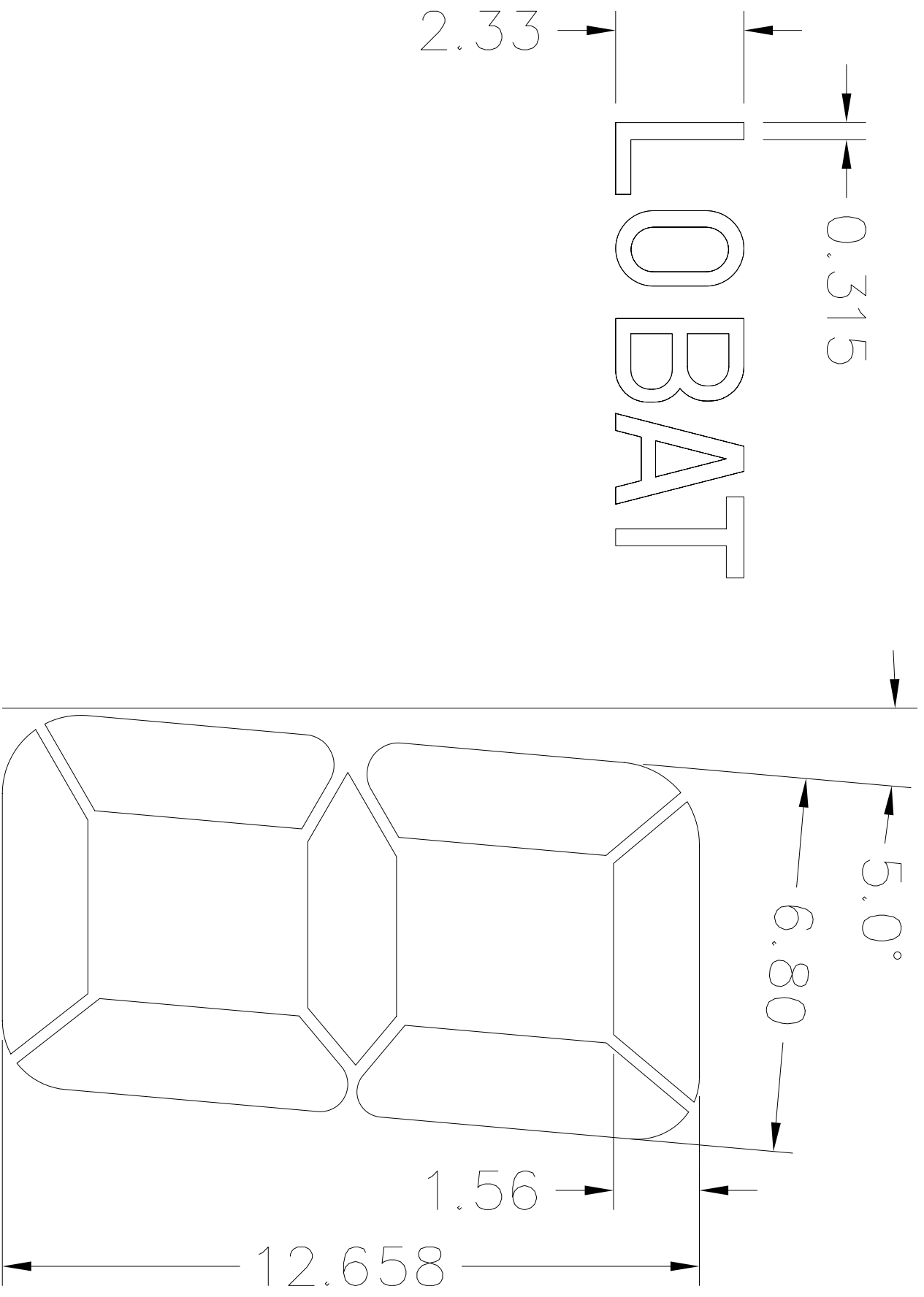


PIN1

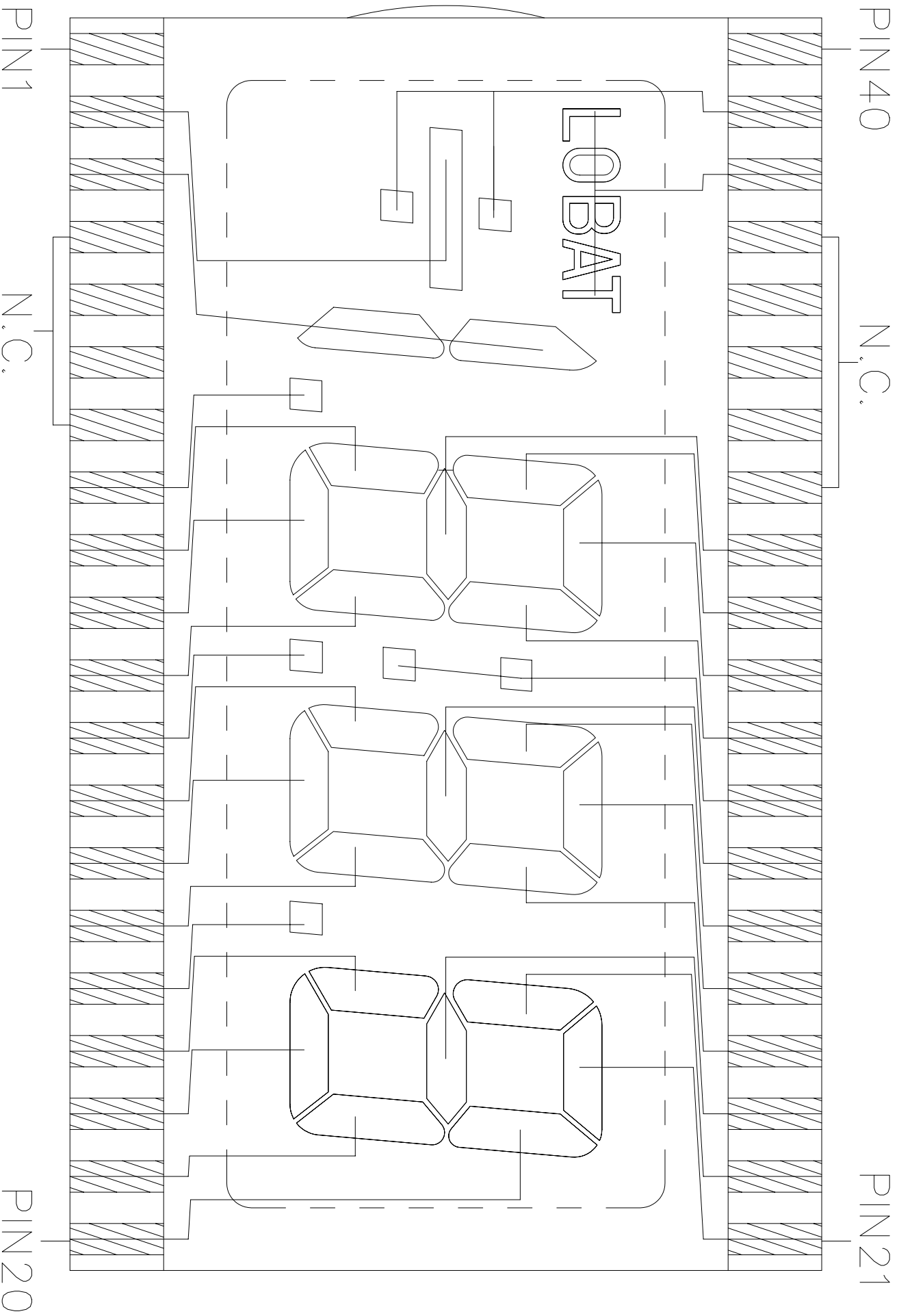
PIN20

DWG.NO.: VI-302-1 (REV.0)

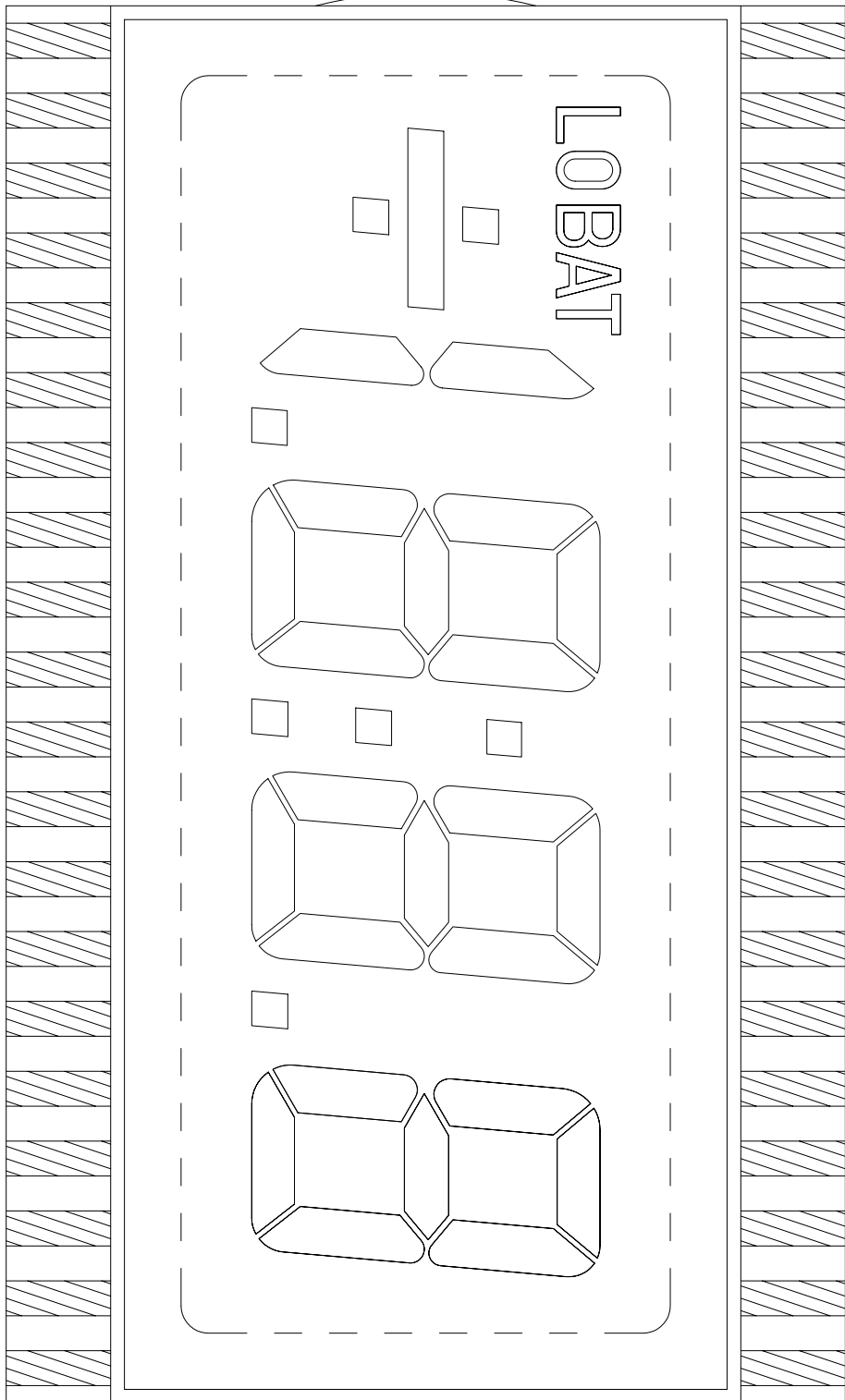
LOBBAT



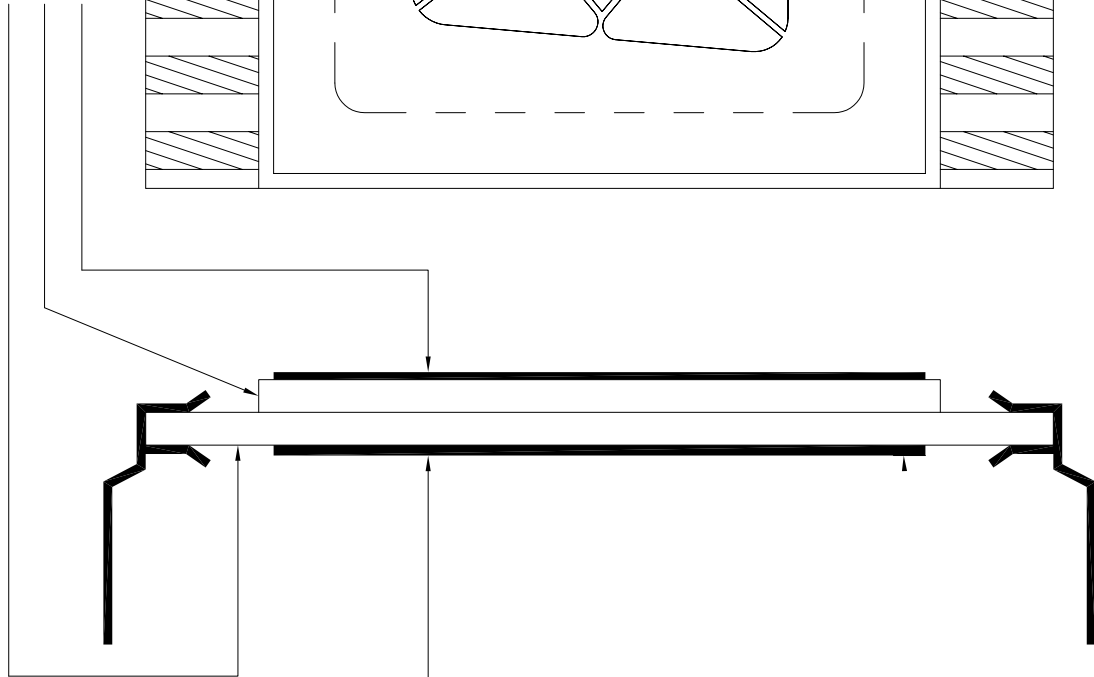
DWG. NO.: VI-302-1 (REV.0)
SEGMENT TRACKING



DWG. NO.: VI-302-1 (REV.0)



FRONT POLARIZER
FRONT GLASS
BACK GLASS
BACK POLARIZER



DWG. NO. : VI-302-1 (REV.0)

PIN	COM
1	COM
2	Y
3	K
4	N.C
5	N.C.
6	N.C.
7	N.C.
8	DP1
9	1E
10	1D
11	1C
12	DP2
13	2E
14	2D
15	2C
16	DP3
17	3E
18	3D
19	3C
20	3B

PIN	COM
21	3A
22	3F
23	3G
24	2B
25	2A
26	2F
27	2G
28	L
29	1B
30	1A
31	1F
32	1G
33	N.C.
34	N.C.
35	N.C.
36	N.C.
37	N.C.
38	Z
39	X
40	COM

REMARKS : N.C. = NO CONNECTION

P.C.B. LINKAGE : PIN1 & PIN40