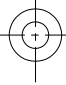
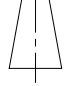


REMARKS : * - REFER TO COVER PAGE

** - X.XX = 2.54 (FOR PIN LENGTH \geq 3.20 & \leq 10.00mm)
 ** - X.XX = 1.75 (FOR PIN LENGTH $>$ 10.00 & \leq 19.50mm)

VARITRONIX LTD.		Dimension : mm		TOL : ± 0.15 IF NOT SPECIFY		DO NOT SCALE DRAWING		3rd ANGLE PROJECTION	
DWGNO. : VI-201-DP0	REV : 0	Drawn by : MING	SIGN :	Checked by : ALEX	SIGN :	Date : 99/01/26			

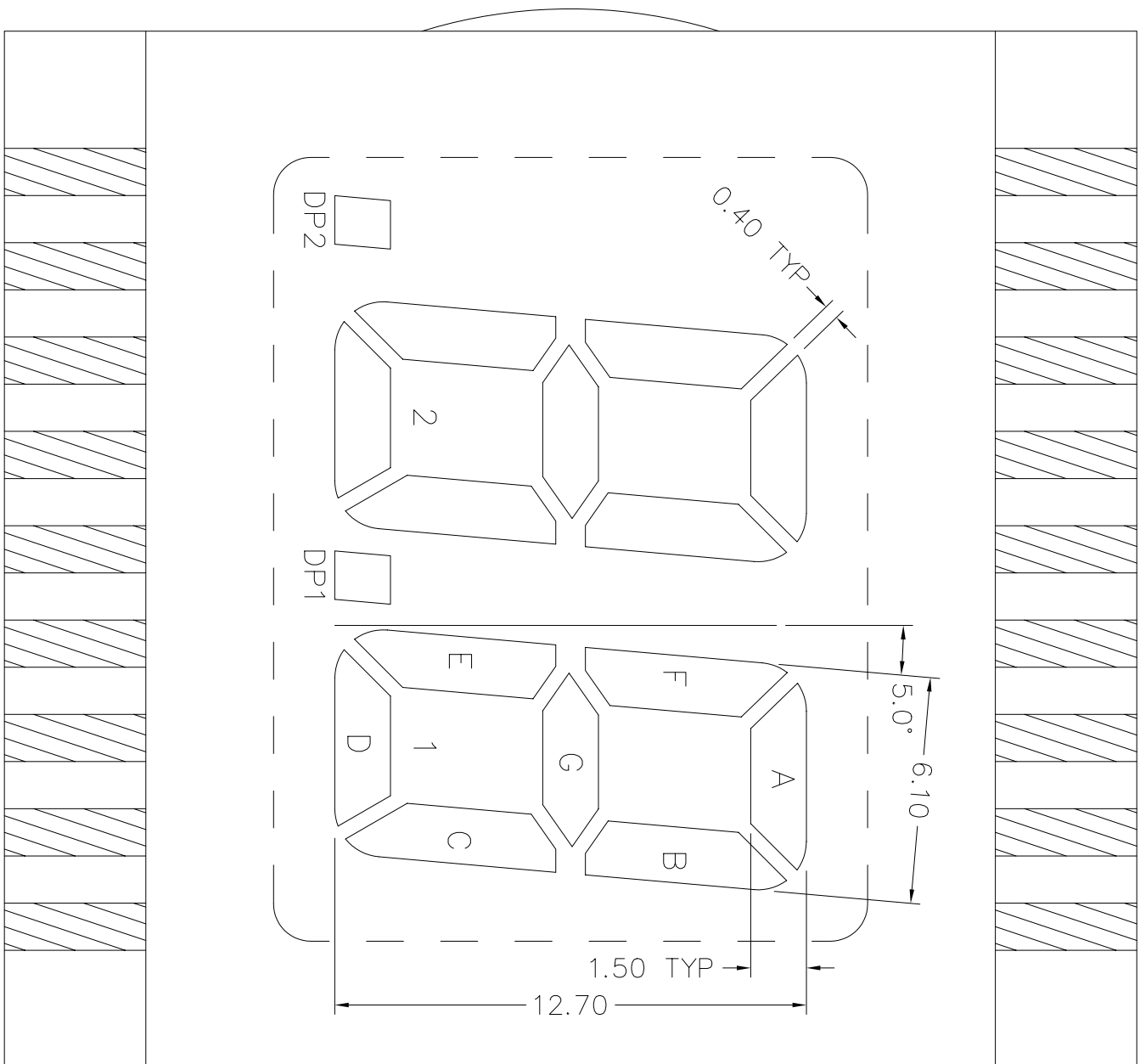
PIN18

DWG.NO. : VI-201-DP (REV.0)

PIN10

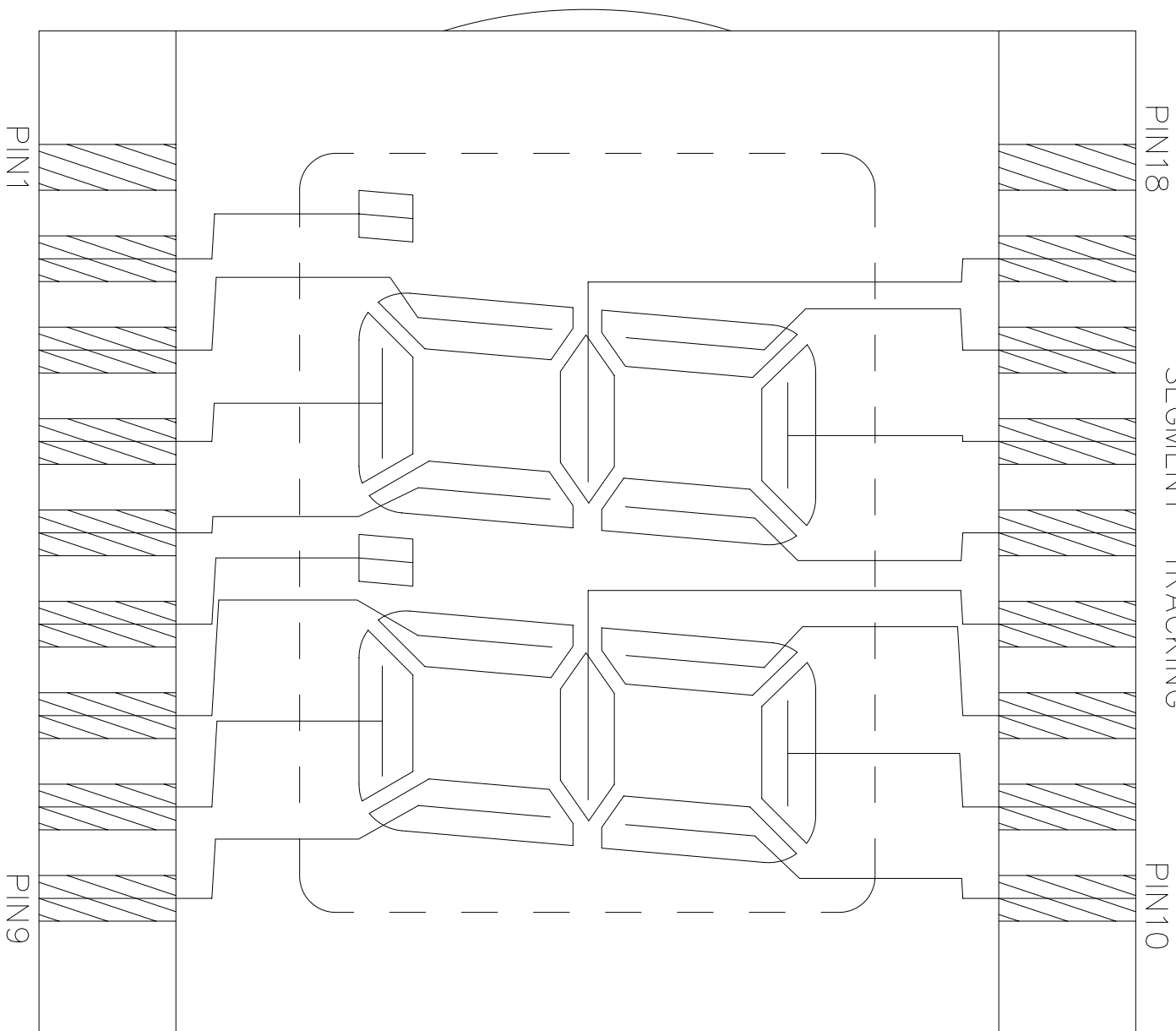
PIN1

PIN9

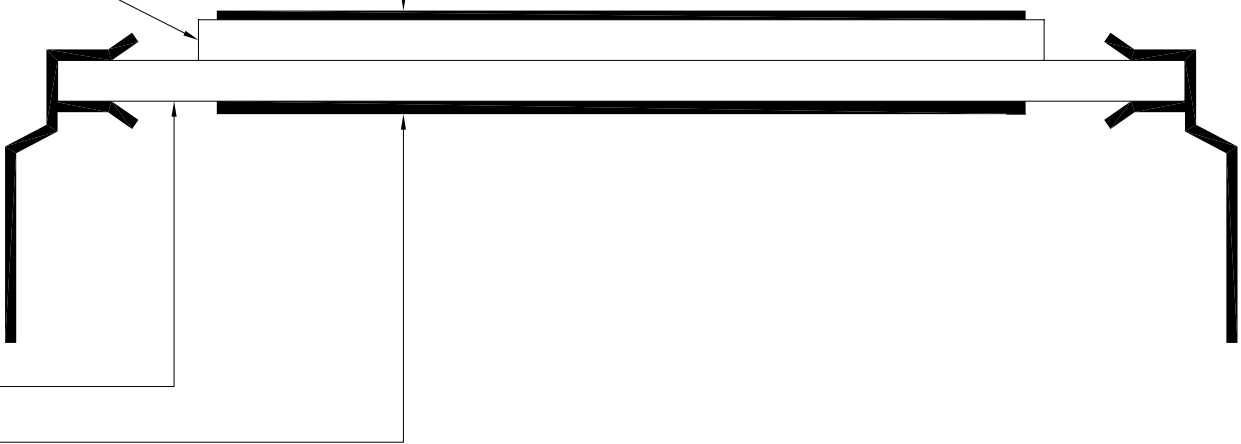
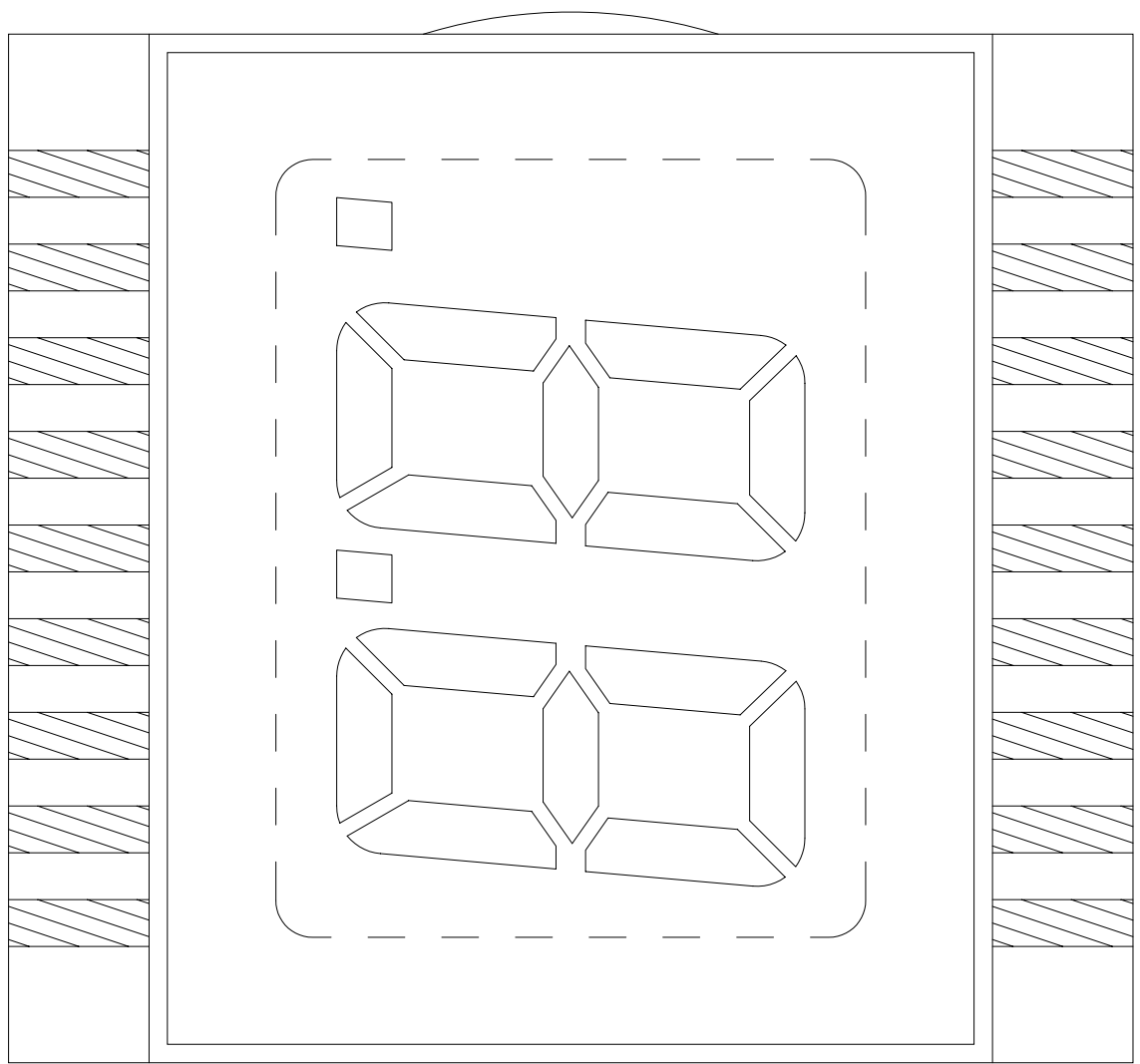


DWG.NO. : VI-201-DP (REV.0)

SEGMENT TRACKING



DWG.NO. : VI-201-DP (REV.0)



FRONT POLARIZER

FRONT GLASS

BACK GLASS

BACK POLARIZER

DWG.NO. : VI-201-DP (REV.0)

PIN	COM	PIN	COM
1	COM	10	1B
2	DP2	11	1A
3	2E	12	1F
4	2D	13	1G
5	2C	14	2B
6	DP1	15	2A
7	1E	16	2F
8	1D	17	2G
9	1C	18	COM

REMARKS : PCB LINKAGE --- PIN1 & PIN18