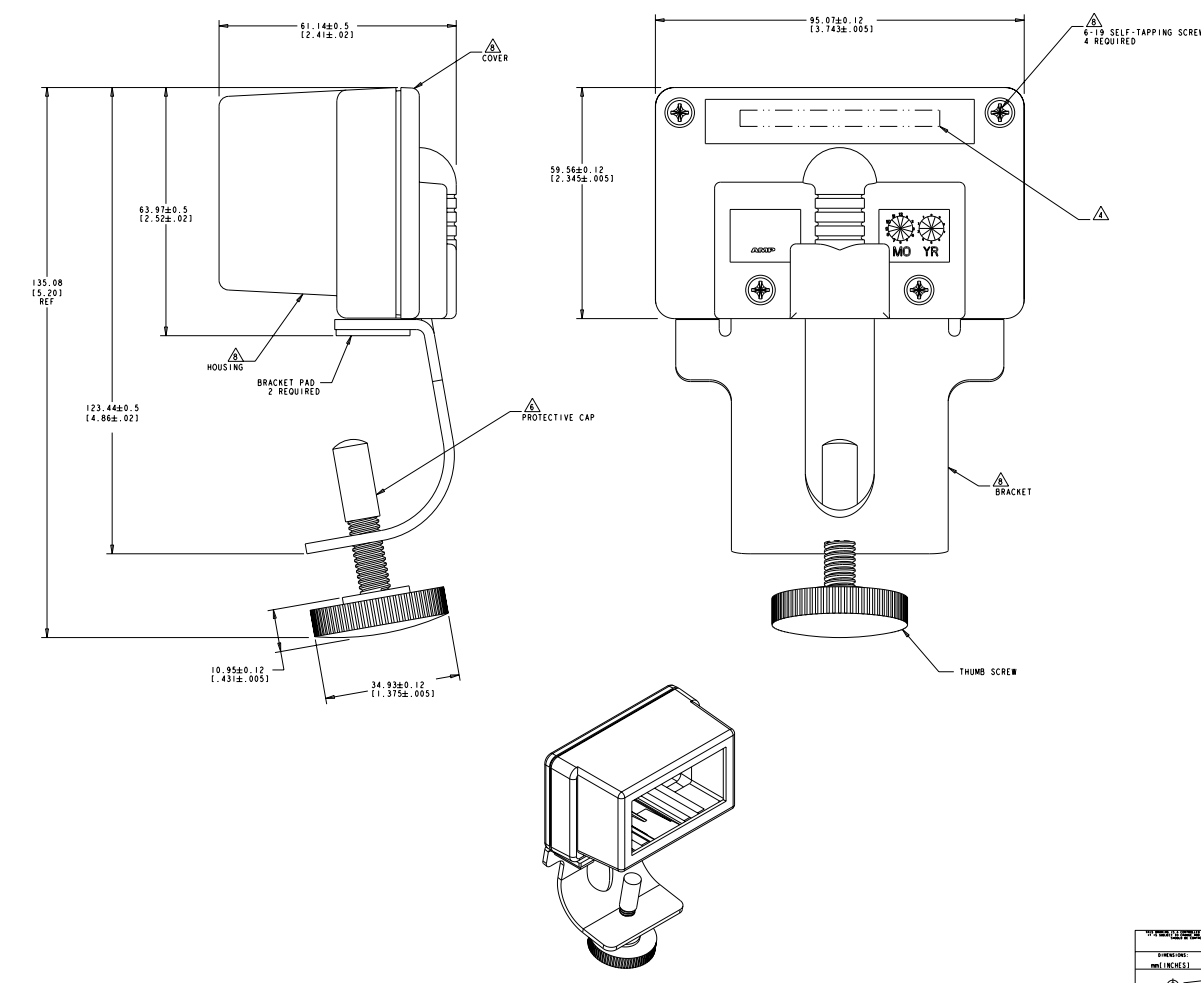


| REV | DATE                 | DESCRIPTION | BY      | CHK | APP |
|-----|----------------------|-------------|---------|-----|-----|
| C   | REV: EC 0840-0176-04 |             | JMG/MSH | LM  | SM  |
| D   | REV: EC 0840-0192-04 |             | JMG/MSH | LM  | LS  |
| E   | REV: EC 08-019674    |             | JMG/MSH | JB  | SJ  |
| F   | REV: EC 11-001920    |             | JMG/MSH | JB  | SJ  |



- 1. MATERIAL: HOUSING AND COVER - POLYCARBONATE MOLDING COMPOUND, 94V-0 RATED. SEE TABLE FOR COLOR.  
 BRACKET - BLACK OXIDE COATED CARBON STEEL.  
 CABLE TIE - NYLON (NOT SHOWN).  
 STRAIN RELIEF STRIP - ABS MOLDING COMPOUND, FLAME RETARDED, BLACK.  
 6-19 SCREWS - ZINC PLATED STEEL, BLACK.  
 THUMB SCREW - STEEL WITH A BLACK MOLDED KNOB.  
 PROTECTIVE CAP - VINYL, BLACK.  
 BRACKET PAD - ADHESIVE BACKED RUBBER, BLACK.
- 2. FOR ADDITIONAL INFORMATION SEE INSTRUCTION SHEET 408-4508.
- 3. KIT IS SHOWN ASSEMBLED BUT IS SHIPPED LOOSE IN A POLYBAG.
- 4. PART NUMBER SHALL BE INK STAMPED ON BACK OF COVER WHERE INDICATED. SEE TABLE FOR PART NUMBER.
- 5. DIMENSIONS SHOWN IN BRACKETS ( ) ARE IN INCHES.
- 6. REMOVAL OF PROTECTIVE CAP BEFORE INSTALLATION IS OPTIONAL.
- 7. RECOMMENDED FLEXMODE PLATES PART NUMBER:  
 558108 2 PORT  
 558107 3 PORT
- 8. ASSEMBLY PROCEDURE:  
 (A) TERMINATE SELECTED TELEPHONE/DATA CABLE TO JACK.  
 (B) SNAP SELECTED JACKS INTO FLEXMODE HOUSING.  
 (C) SNAP SELECTED FLEXMODE WITH JACKS INTO HOUSING.  
 (D) USE SUPPLIED CABLE TIE AND ATTACH TO LOOP IN HOUSING OR SELECT THE CORRECT STRAIN RELIEF STRAIN RELIEF STRIP ACCOMMODATES THE FOLLOWING CABLE SIZES:  
 1- .035 - .062 THICK X .50 WIDE FLAT CABLE  
 2- .14 - .24 DIAMETER ROUND CABLE  
 3- .14 - .24 DIAMETER ROUND CABLE  
 (E) PLACE BRACKET IN PLACE IN HOUSING.  
 (F) ASSEMBLE COVER AND BRACKET TO HOUSING.  
 (G) SECURE COVER AND BRACKET TO HOUSING WITH 4 SCREWS PROVIDED.

|       |             |
|-------|-------------|
| BLACK | 1116360-3   |
| COLOR | PART NUMBER |

|                      |               |  |
|----------------------|---------------|--|
| DATE: 24 JUL 88      | REV: 0840098  | AMP Incorporated<br>Merrick, PA 17105-3600 |
| BY: JERRY KELLER/TEC | CHK: JMG/MSH  | KIT, FLEXMODE, DATA MONUMENT               |
| APP: JMG/MSH         | DATE: 0840098 |  |
| SCALE: 2:1           | STY: 00778    | 1116360                                    |
| CUSTOMER DRAWING     | SHEET: 2:1    | OF: 1                                      |