

3·1/2 DIGIT SINGLE CHIP A/D CONVERTER

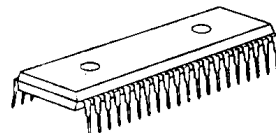
■ GENERAL DESCRIPTION

The NJU9201B/9202B are low-power-consumption, high-performance 3·1/2 digit single chip A/D converters containing a voltage reference, oscillator, 3·1/2 digit A/D converter, 7-segment decoder, display driver and control circuits.

The NJU9201B is designed for direct LCD driving and the NJU9202B for direct LED driving.

The NJU9201B/9202B can be operated on simple application circuits as they require only few external components, therefore they are most suited for digital multimeters, digital thermometers and other likes.

■ PACKAGE OUTLINE

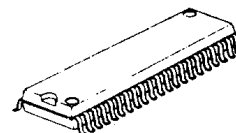


NJU9201BD/9202BD

5

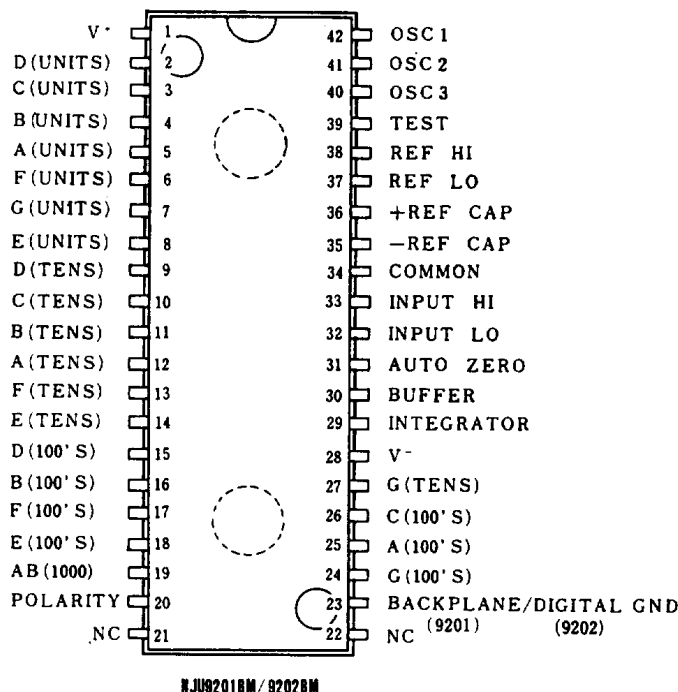
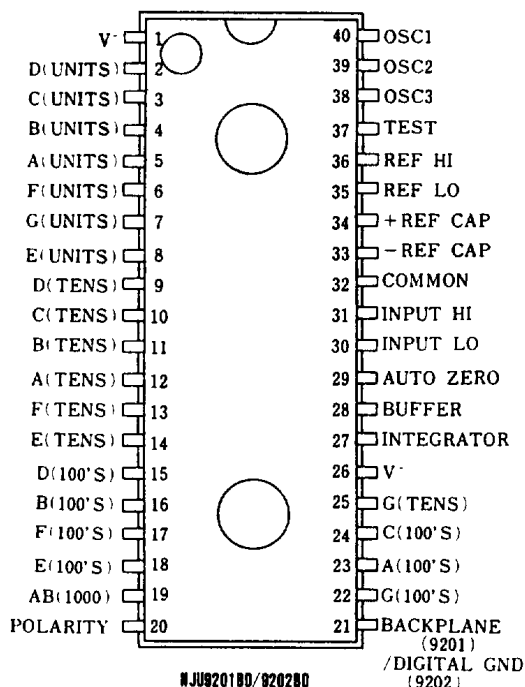
■ FEATURES

- Guaranteed 0 Reading for 0 input on all scales
- Polarity detection at 0 point
using a high-accuracy null-detection
- Low Input Current — 1pA typ.
- True differential input and reference
- Display device direct driving
 - NJU9201B — LCD
 - NJU9202B — LED
- Reference and Oscillation Circuits incorporated
- Low power consumption
- No external active components required
- Package Outline — DIP 40 /DMP 42
- C-MOS Technology



NJU9201BM/9202BM

■ PIN CONFIGURATION





ABSOLUTE MAXIMUM RATINGS

(Ta=25°C)

PARAMETER	DEVICE	SYMBOL	RATINGS	UNIT
Supply Voltage	9201B Only	$V^+ - V^-$	15	V
	9202B Only	V^+	+6	
	9202B Only	V^-	-9	
Analog Input Voltage	9201B/9202B	V_{IN}	$V^+ \sim V^-$	V
Reference Input Voltage	9201B/9202B	V_{ref}	$V^+ \sim V^-$	V
Clock Input	9201B Only	V_{CLK}	Test $\sim V^+$	V
	9202B Only		GND $\sim V^+$	
Power Dissipation	9201B/9202B	P_D	300 / 800	mW
Operating Temperature Range	9201B/9202B	T_{OPR}	0 \sim + 75	°C
Storage Temperature Range	9201B/9202B	T_{STG}	-40 \sim +125	°C

Note 1) The input current is limit by $\pm 100\mu A$ when the input voltage is over supply voltage.

ELECTRICAL CHARACTERISTICS

(Ta=25°C, $f_{clock}=48kHz$)

PARAMETER	SYMBOL	CONDITIONS	MIN	TYP	MAX	UNIT
Zero Input Reading	No	$V_{IN}=0.0V, FS=200.0mV$	-000.0	± 000.0	+000.0	Counts
Ratiometric Reading	N1000	$V_{IN}=V_{ref}, V_{ref}=100mV$	999	999/1000	1000	
Rollover Error	Err	$-V_{IN}=+V_{IN}-200.0mV$ (2)	-2	± 0.5	+2	Counts
Linearity	Lin	Full Scale=200mV (3)	-2	± 0.5	+2	Counts
Common Mode Rejection Ratio	$CMRR$	$V_{cm}=\pm 1V, V_{IN}=0V,$ Full Scale=200.0mV		50		$\mu V/V$
Noise(P-P Value)	V_{NI}	$V_{IN}=0V, FS=200.0mV$ (4)		30		μV
Leakage Current	I_L	$V_{IN}=0V$		1	10	μA
Zero Reading Drift	Z_D	$V_{IN}=0V, 0 < T_a < 75^\circ C$		0.2	1	$\mu V/^\circ C$
Scale Factor Temp. Coeff.	F_{temp}	$V_{IN}=199.0mV, 0 < T_a < 75^\circ C$		1	5	ppm/°C
Operating Current	I_{DD}	$V_{IN}=0V, No Load$		0.8	1.8	mA
Analog Common Voltage		25k Ω Between Common and	2.4	3.0	3.2	V
Temp. Coeff.of Analog Common		Positive Supply		80		ppm/°C
Seg. Drive Voltage (9201B)		$V_{DD}=9V$	4	5	6	V
BackPlane Drive Volt.(9201B)		$V_{DD}=9V$	4	5	6	
Seg. Sinking Current (9202B)		$V_{DD}=5V,$ Except Term.19	5.0	8.0		mA
Seg. Sinking Current (9202B)		Seg.V=3V Term.19 only	10	16		

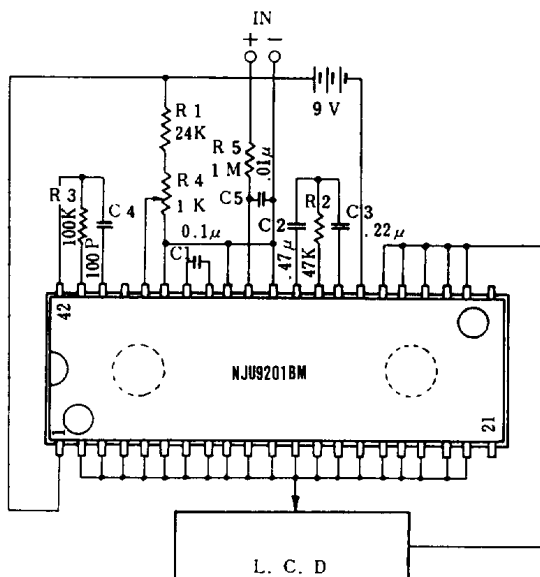
Note 2) Differential read out value of positive and negative voltage input.

3) Error from the input-output linear characteristics getting from positive and negative full-scale input read out.

4) The peak value of noise must be not over 95% period in the measurement time.

■ APPLICATION CIRCUITS

NJU9201B



5

NJU9202B

