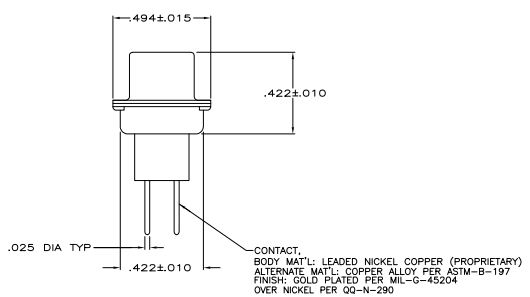
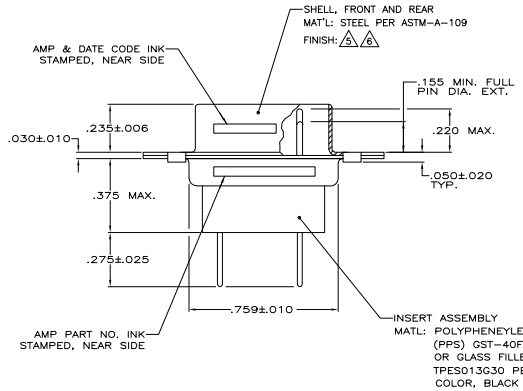
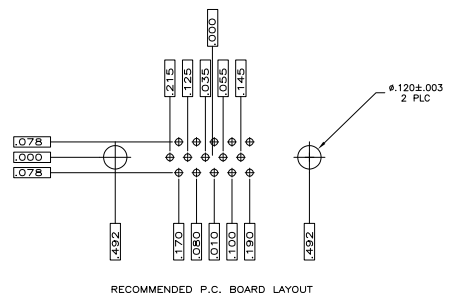
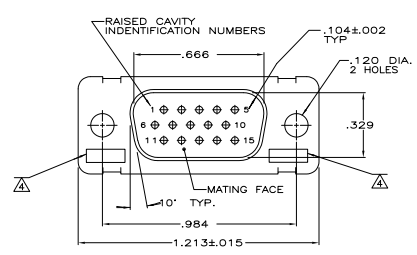


REV	DATE	DESCRIPTION	BY	CHK
1				
2				
3				
4				
5				
6				
7				
8				



- .040 DIA HOLE IS RECOMMENDED FOR P.C. BOARD
  - CONNECTOR MATES WITH ANY AMP 15 POSN RECEPTACLE
  - REPLACEMENT PIN AMP# 207683-8
- $\Delta$  UL/CSA DESIGNATION STAMPED IN THIS AREA.  
 $\Delta$  FINISH: CADMIUM PER QQ-P-416  
 $\Delta$  FINISH: ZINC PLATED PER ASTM-B-633, .000200-.000400 THK WITH SUPPLEMENTARY CHROMATE (Cr3+)

INSERT ASSEMBLY  
 MAT'L: POLYPHENYLENE SULFIDE (PPS) GST-40F PER MIL-M-24519 OR GLASS FILLED POLYESTER, TPESD13G30 PER ASTM D5927  
 COLOR, BLACK

PLATED PER $\Delta$	5-208866-1
PLATED PER $\Delta$	208866-1
DESCRIPTION	PART NO.

THIS DRAWING IS A CONTROLLED DOCUMENT.		J. C. THOMAS J. R. HALLER, III 1-17-88 1-18-88	Thomas Electronics Corporation Harrisburg, Pa 17105-3608
DIMENSIONS: INCHES TOLERANCES: DECIMALS .010 .015 .020 .030 .040 .050 .060 .070 .080 .100 .125 .150 .200 .250 .300 .375 .500 .625 .750 .875 1.000 1.250 1.500 1.750 2.000 2.500 3.000 3.500 4.000 5.000 6.000 7.000 8.000 9.000 10.000	FINISHES: SEE CALLOUTS MATERIALS: SEE CALLOUTS TYPICAL: SEE CALLOUTS UNLESS OTHERWISE SPECIFIED: SEE CALLOUTS	PART NO.: AMP15 DESCRIPTION: AMP15 15 POSN PLUG ASSY DATE: 10/07/79 DRAWN NO.: G-208866 CUSTOMER DRAWING: YES	SHEET: 2-1 TOTAL SHEETS: 1 REV: K