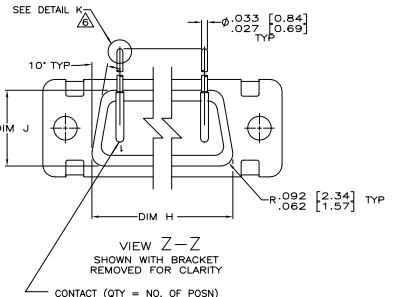
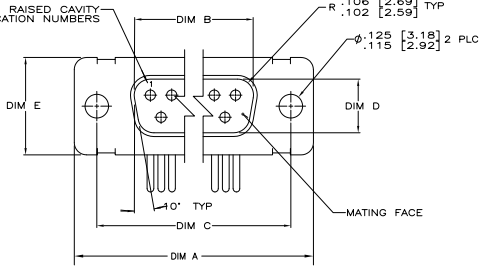
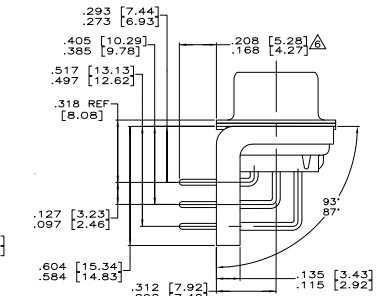
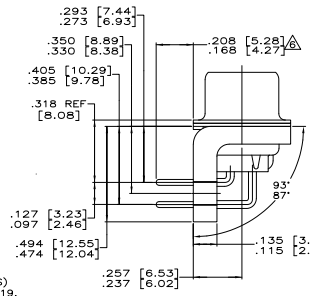
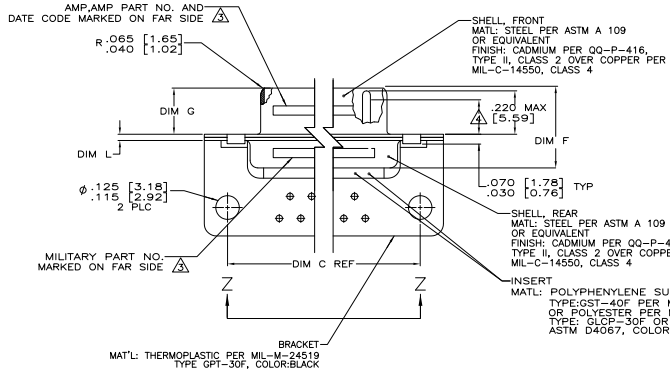


THIS DRAWING IS UNCLASSIFIED
 UNLESS INDICATED OTHERWISE
 ALL RIGHTS RESERVED
 © 2008 BY TTI ELECTRONICS CORPORATION



REV	DATE	DESCRIPTION	BY	APP
1				
2				
3				
4				
5				
6				
7				
8				

- SEE SHEET 2 FOR RECOMMENDED P.C. BOARD LAYOUT. TRUE POSITION TOLERANCE FOR P.C. BOARD LAYOUT IS .010 [0.25] AT MAX MATERIAL CONDITION. SUGGESTED BOARD THICKNESS IS .062 [1.57]
- THE CONNECTORS DESCRIBED IN THIS DOCUMENT MEET THE REQUIREMENTS OF MIL-C-24308 AND MATE WITH ANY RECEPTACLE CONNECTOR WITH SAME INSERT ARRANGEMENT.
- MARKED WITH .047 [1.19]-.062 [1.57] HIGH CHARACTERS. FAR SIDE REFERS TO THE WIDE SIDE OF THE KEYSTONE. NEAR SIDE REFERS TO THE NARROW SIDE OF THE KEYSTONE. IF THE REAR SHELL IS TOO SMALL FOR THE ENTIRE MILITARY PART NUMBER, MARKING SHALL BE LOCATED AS FOLLOWS:
 - A. "M24308" ON FRONT SHELL, FAR SIDE.
 - B. SLASH SHEET AND DASH NUMBER ON REAR SHELL, FAR SIDE.
 - C. "AMP" AND DATE CODE ON FRONT SHELL, NEAR SIDE.
 - D. AMP PART NUMBER ON REAR SHELL, NEAR SIDE.
- IF THE FRONT SHELL IS TOO SMALL FOR "AMP", AMP PART NUMBER AND DATE CODE, MARKING SHALL BE SPLIT AS FOLLOWS:
 - A. AMP PART NUMBER ON REAR SHELL, NEAR SIDE.
 - B. "AMP" AND DATE CODE ON FRONT SHELL, NEAR SIDE.
 - C. MILITARY PART NUMBER ON REAR SHELL, FAR SIDE.
- REQUIREMENT FOR FULL PIN DIAMETER EXTENSION:
 - .159 [4.04] MIN. SHELL SIZES 1 AND 2.
 - .150 [3.81] MIN. SHELL SIZES 3 AND 4.
- THIS DRAWING SHALL BE INTERPRETED IN ACCORDANCE WITH APPLICABLE STANDARDS LISTED IN MIL-STD-100.
- SOLDER DIPPED PER MIL-STD-2000 COMPOSITION Sn63 CONFORMING TO QQ-S-571 IN THE ENTIRE AREA OF DIMENSION SHOWN. 1218444-6 THRU -10 ONLY.



049	1.24	.544	13.82	2.188	55.58	.236	5.99	.436	11.07	.620	15.75	.446	11.33	2.411	61.24	2.084	52.55	2.650	67.31
.029	0.74	.324	8.31	2.188	55.07	.224	5.69	.416	10.67	.590	14.99	.436	11.07	2.401	60.99	2.074	52.30	2.620	66.55
.049	1.24	.432	10.97	2.282	57.96	.236	5.99	.436	11.07	.509	12.93	.334	8.48	2.505	63.63	2.197	54.97	2.744	69.70
.029	0.74	.412	10.46	2.282	57.45	.224	5.69	.416	10.67	.479	12.17	.324	8.23	2.485	63.37	2.177	54.71	2.714	68.94
.049	1.24	.432	10.97	1.635	41.53	.236	5.99	.436	11.07	.509	12.93	.334	8.48	1.857	47.17	1.539	38.51	2.103	53.42
.029	0.74	.412	10.46	1.615	41.02	.224	5.69	.416	10.67	.479	12.17	.324	8.23	1.847	46.91	1.529	38.25	2.073	52.65
.049	1.24	.432	10.97	1.093	27.76	.236	6.05	.436	10.97	.509	12.93	.334	8.48	1.317	33.45	.989	24.79	1.556	39.52
.020	0.51	.412	10.46	1.073	27.25	.229	5.82	.412	10.46	.479	12.17	.324	8.23	1.307	33.20	.989	24.54	1.526	38.76
.040	1.02	.432	10.97	.769	19.53	.236	6.05	.436	10.97	.509	12.93	.334	8.48	.989	25.12	.671	16.46	1.228	31.19
.020	0.51	.412	10.46	.749	19.02	.229	5.82	.412	10.46	.479	12.17	.324	8.23	.979	24.87	.661	16.21	1.198	30.43
.049	1.24	.344	8.82	2.188	55.58	.236	5.99	.436	11.07	.620	15.75	.446	11.33	2.411	61.24	2.084	52.55	2.650	67.31
.029	0.74	.324	8.31	2.188	55.07	.224	5.69	.416	10.67	.590	14.99	.436	11.07	2.401	60.99	2.074	52.30	2.620	66.55
.049	1.24	.432	10.97	2.282	57.96	.236	5.99	.436	11.07	.509	12.93	.334	8.48	2.505	63.63	2.197	54.97	2.744	69.70
.029	0.74	.412	10.46	2.282	57.45	.224	5.69	.416	10.67	.479	12.17	.324	8.23	2.485	63.37	2.177	54.71	2.714	68.94
.049	1.24	.432	10.97	1.635	41.53	.236	5.99	.436	11.07	.509	12.93	.334	8.48	1.857	47.17	1.539	38.51	2.103	53.42
.029	0.74	.412	10.46	1.615	41.02	.224	5.69	.416	10.67	.479	12.17	.324	8.23	1.847	46.91	1.529	38.25	2.073	52.65
.040	1.02	.432	10.97	1.093	27.76	.236	6.05	.436	10.97	.509	12.93	.334	8.48	1.317	33.45	.989	24.79	1.556	39.52
.020	0.51	.412	10.46	1.073	27.25	.229	5.82	.412	10.46	.479	12.17	.324	8.23	1.307	33.20	.989	24.54	1.526	38.76
.040	1.02	.432	10.97	.769	19.53	.236	6.05	.436	10.97	.509	12.93	.334	8.48	.989	25.12	.671	16.46	1.228	31.19
.020	0.51	.412	10.46	.749	19.02	.229	5.82	.412	10.46	.479	12.17	.324	8.23	.979	24.87	.661	16.21	1.198	30.43

DIM L	DIM J	DIM H	DIM G	DIM F	DIM E	DIM D	DIM C	DIM B	DIM A
.049	1.24	.544	13.82	2.188	55.58	.236	5.99	.436	11.07
.029	0.74	.324	8.31	2.188	55.07	.224	5.69	.416	10.67
.049	1.24	.432	10.97	2.282	57.96	.236	5.99	.436	11.07
.029	0.74	.412	10.46	2.282	57.45	.224	5.69	.416	10.67
.049	1.24	.432	10.97	1.635	41.53	.236	5.99	.436	11.07
.029	0.74	.412	10.46	1.615	41.02	.224	5.69	.416	10.67
.040	1.02	.432	10.97	1.093	27.76	.236	6.05	.436	10.97
.020	0.51	.412	10.46	1.073	27.25	.229	5.82	.412	10.46
.040	1.02	.432	10.97	.769	19.53	.236	6.05	.436	10.97
.020	0.51	.412	10.46	.749	19.02	.229	5.82	.412	10.46

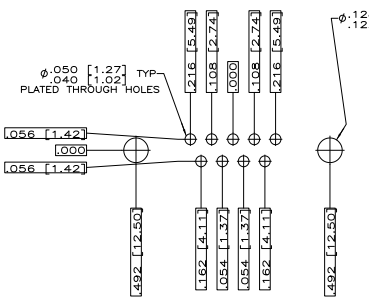
MS18277-1	50	5	M24308/24-53F	1218444-5	1-1218444-0
MS18276-1	37	4	M24308/24-52F	1218444-4	1218444-9
MS18275-1	25	3	M24308/24-51F	1218444-3	1218444-8
MS18274-1	15	2	M24308/24-50F	1218444-2	1218444-7
MS18273-1	9	1	M24308/24-49F	1218444-1	1218444-6
MS18277-1	50	5	M24308/24-53F	1218444-5	1218444-10
MS18276-1	37	4	M24308/24-52F	1218444-4	1218444-9
MS18275-1	25	3	M24308/24-51F	1218444-3	1218444-8
MS18274-1	15	2	M24308/24-50F	1218444-2	1218444-7
MS18273-1	9	1	M24308/24-49F	1218444-1	1218444-6

DETAIL K
 SCALE 8:1
 FOR 1218444-6 THRU -10 ONLY

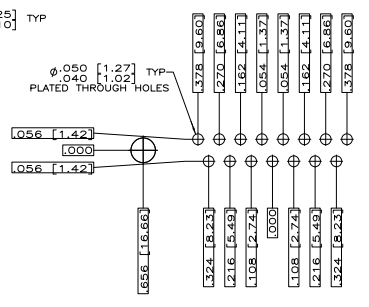
AMP 485 REV 2/2008

AMP

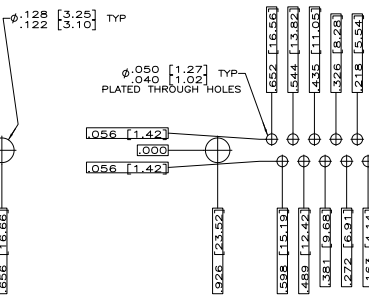
REV	DATE	DESCRIPTION	BY	APP
DF	DO	SEE SHEET 1	-	-



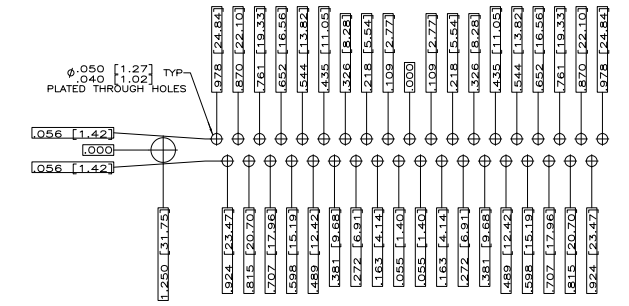
RECOMMENDED P.C. BOARD LAYOUT
SHELL SIZE 1 (9 POSITION) Δ



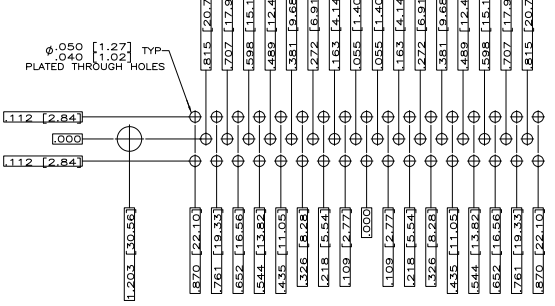
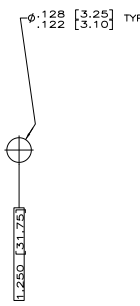
RECOMMENDED P.C. BOARD LAYOUT
SHELL SIZE 2 (15 POSITION) Δ



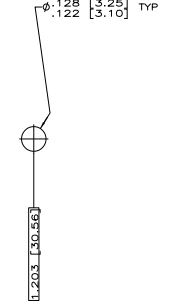
RECOMMENDED P.C. BOARD LAYOUT
SHELL SIZE 3 (25 POSITION) Δ



RECOMMENDED P.C. BOARD LAYOUT
SHELL SIZE 4 (37 POSITION) Δ



RECOMMENDED P.C. BOARD LAYOUT
SHELL SIZE 5 (50 POSITION) Δ



THIS DRAWING IS A CONTROLLED DOCUMENT.		REV. C. THOMAS 12-14-98	TYS Electronics	Tys Electronics Corporation Harrisburg, PA 17105-3608
DESIGNER	DRWG. NO.	DATE	PLUG ASSY AMP/LMTE RIGHT ANGLE SERIES 109 SIZE 1 THRU 5	
APPROVER	SEE CALLOUTS	SEE CALLOUTS	SIZE	DATE
		A1 00779		1218444
		SHEET 4		OF 2