

4

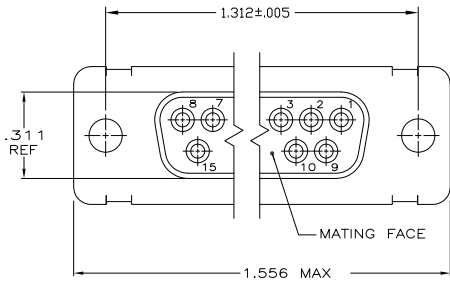
3

2

1

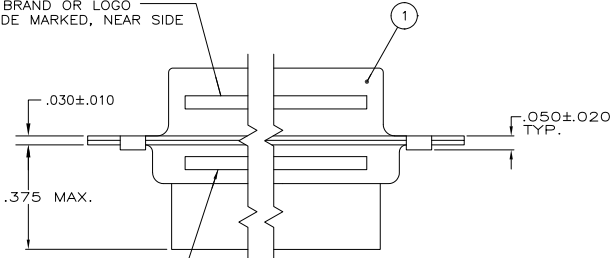
THIS DRAWING IS UNPUBLISHED. RELEASED FOR PUBLICATION. ALL RIGHTS RESERVED.

| LOC | | DIBT | | REVISIONS | | | |
|-----|----|---------------------------|---------|-----------|------|--|--|
| P | LR | DESCRIPTION | DATE | BY | APPD | | |
| H1 | | REVISED PER ECO-11-005030 | 11MAR11 | RK | HMR | | |

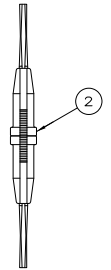
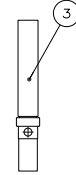
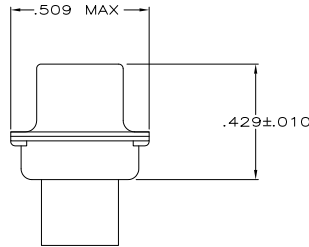


⚠ FOR CONNECTOR ASSEMBLIES, TE CONNECTIVITY CONTACT PART NOS. 205090-1 MUST BE ORDERED SEPARATELY. CONNECTORS WITH CONTACTS ARE SUPPLIED WITH CONTACT 205090-1

MFG'S NAME, BRAND OR LOGO AND DATE CODE MARKED, NEAR SIDE



MILITARY P/N (SEE TABLE) MARKED, FAR SIDE



| OBSELETE | 205557-3 | M24308/6-7F | 205090-1 | 91067-2 | 205163-2 | 205557-5 |
|---------------------------------------|--------------------------------|--------------------------|------------------------------------|--------------------------|-------------|----------|
| SUPERSEDED BY 205433-2 AND 91067-2 | 205557-3 | M24308/6-2F | 205090-1 | - | 205163-2 | 205557-4 |
| | 205557-3 | M24308/2-7F | 205090-1 | 91067-2 | 205163-1 | 205557-3 |
| | 205557-2 | M24308/2-2F | 205090-1 | - | 205163-1 | 205557-2 |
| SUPERSEDED BY 205417-1 AND 91067-2 | 205557-1 | - | - | 91067-2 | 205163-1 | 205557-1 |
| TE CONNECTIVITY P/N MARKED ON PACKAGE | MILITARY P/N MARKED ON PACKAGE | SOCKET CONTACT QTY. = 15 | INSERTION/EXTRACTION TOOL QTY. = 1 | RECEPTACLE ASSY QTY. = 1 | PART NUMBER | |

THIS DRAWING IS A CONTROLLED DOCUMENT.

| | | |
|------------------------|---------------|-----------------|
| DESIGNED BY: P. YEAGER | DATE: 10MAR09 | TE Connectivity |
| CHKD BY: S. LEASE | DATE: 12MAR09 | |
| APPD BY: R. LEASE | DATE: 12MAR09 | |
| PRODUCT SPEC: | | |
| APPLICATION SPEC: | | |
| WEIGHT: | | |
| MATERIAL: | | |
| FINISH: | | |

SIZE: A2 CASE CODE: 00779 DRAWING NO: C-205557

CUSTOMER DRAWING SCALE: 4:1 SHEET: 1 of 1 REV: H1