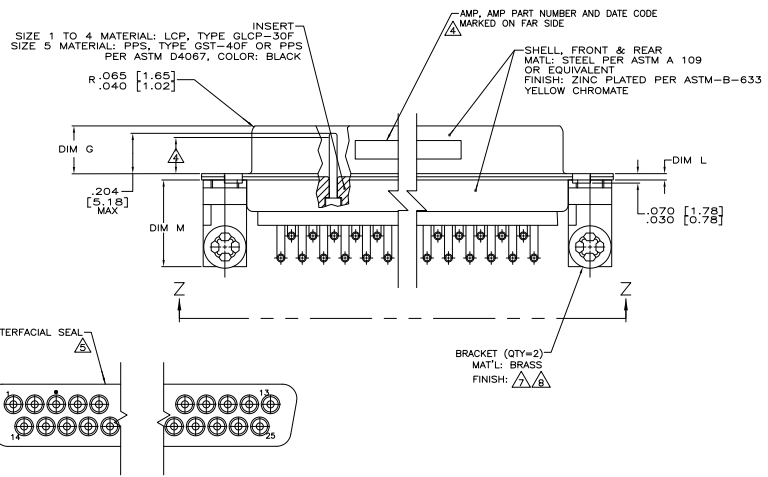
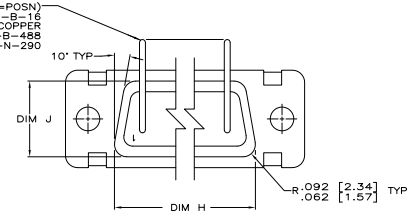
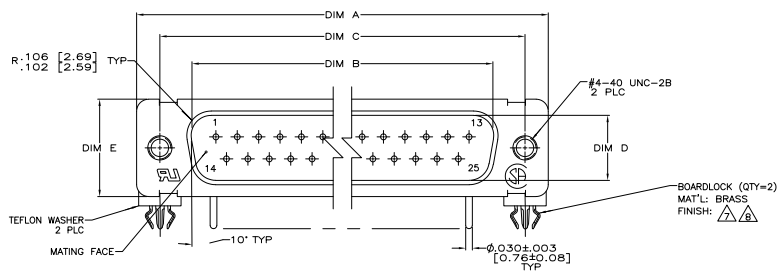


THIS DRAWING IS UNPUBLISHED  
 UNLESS INDICATED OTHERWISE  
 © 2008 BY TDS ELECTRONICS CORPORATION ALL RIGHTS RESERVED

REV	DATE	DESCRIPTION	BY	APP
DF	DO			
G		REV PER ECU 07-017102	21SEP07	PY EW



- $\Delta$  TRUE POSITION TOLERANCE FOR P.C.B. BOARD LAYOUT (ON SHEET #2) IS .010 [0.25] AT MAX MATERIAL CONDITION. SUGGESTED BOARD THICKNESS IS .093 [2.36]
- 2. THE CONNECTOR DESCRIBED IN THIS DOCUMENT WILL MATE WITH ANY RECEPTACLE CONNECTOR WITH THE SAME INSERT ARRANGEMENT.
- $\Delta$  MARKED WITH .047 [1.19]-.062 [1.57] HIGH CHARACTERS. FAR SIDE REFERS TO THE WIDE SIDE OF THE KEYSTONE. NEAR SIDE REFERS TO THE NARROW SIDE OF THE KEYSTONE. IF THE FRONT SHELL IS TOO SMALL FOR 'AMP', AMP PART NUMBER AND DATE CODE, THEN SPLIT SHALL BE AS FOLLOWS:
  - A. AMP PART NUMBER ON REAR SHELL, NEAR SIDE.
  - B. 'AMP' AND DATE CODE ON FRONT SHELL, NEAR SIDE.
- $\Delta$  REQUIREMENT FOR FULL PIN DIAMETER EXTENSION: .150 [3.81] MIN FOR SHELL SIZE 3 & 5.
- $\Delta$  INTERFACIAL SEAL IS NOT INSTALLED; BULK PACKAGED SEPARATELY.
- $\Delta$  FINISH: MATTE TIN-LEAD OVER NICKEL PLATE.
- $\Delta$  FINISH: MATTE TIN OVER NICKEL PLATE.
- $\Delta$  ALTERNATE CLINCH NUT (QTY=2): CLINCH NUT, #4-40 FEMALE THREADS MAT'L: CARBON STEEL FINISH: ZINC PLATED, YELLOW CHROMATE

REMARKS	DIM M	DIM L	DIM J	DIM H	DIM G	DIM F	DIM E	DIM D	DIM C	DIM B	DIM A	INSERT ARRANGEMENT	NO. OF POS.	SHELL SIZE	AMP PART NO.										
$\Delta$ 498	2.65	.049	1.24	.544	3.82	2.188	55.58	.236	5.99	.436	11.07	.620	15.75	.448	11.33	2.411	61.24	2.084	52.55	2.650	67.31	MS18277-1	50	5	5-1218538-5
$\Delta$ 443	1.25	.049	1.24	.432	10.97	1.635	41.53	.236	5.99	.436	11.07	.509	12.93	.334	8.48	1.857	47.17	1.539	38.51	2.103	53.42	MS18275-1	25	3	5-1218538-3
$\Delta$ 435	11.05	.029	1.74	.412	10.46	1.615	41.02	.224	5.69	.416	10.57	.479	12.17	.324	8.23	1.847	46.91	1.529	38.25	2.073	52.85	MS18277-1	50	5	1218538-5
$\Delta$ 498	2.65	.049	1.24	.544	3.82	2.188	55.58	.236	5.99	.436	11.07	.620	15.75	.448	11.33	2.411	61.24	2.084	52.55	2.650	67.31	MS18277-1	50	5	1218538-5
$\Delta$ 490	2.45	.029	1.74	.524	13.31	2.168	55.07	.224	5.69	.416	10.57	.509	14.99	.436	11.07	2.401	60.99	2.074	52.30	2.620	66.95	MS18275-1	25	3	1218538-3
$\Delta$ 443	11.25	.049	1.24	.432	10.97	1.635	41.53	.236	5.99	.436	11.07	.509	12.93	.334	8.48	1.857	47.17	1.539	38.51	2.103	53.42	MS18275-1	25	3	1218538-3
$\Delta$ 435	11.05	.029	1.74	.412	10.46	1.615	41.02	.224	5.69	.416	10.57	.479	12.17	.324	8.23	1.847	46.91	1.529	38.25	2.073	52.85	MS18275-1	25	3	1218538-3

THIS DRAWING IS A CONTROLLED DOCUMENT. **REV. C** THOMAS **01-08** **BY Type Electronics** Type Electronics Corporation Harrisburg, PA 17105-3608

DESIGNER: **W. BAKER** DATE: **01-08**

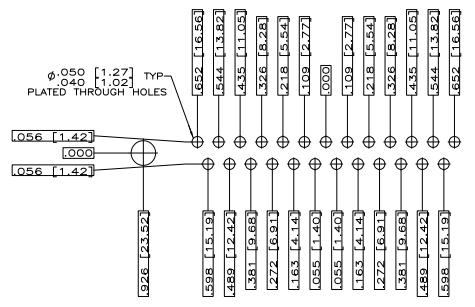
CHECKER: **W. BAKER**

APPROVER: **W. BAKER**

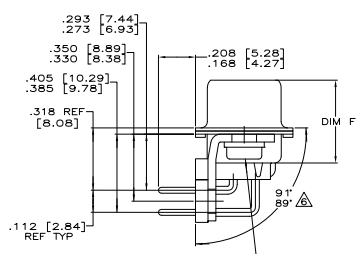
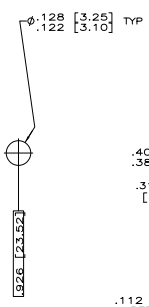
DATE: **01-08**

SIZE: **A1** DATE: **00779** DRAWING NO: **G=1218538** REV: **1** OF **2**

CUSTOMER DRAWING

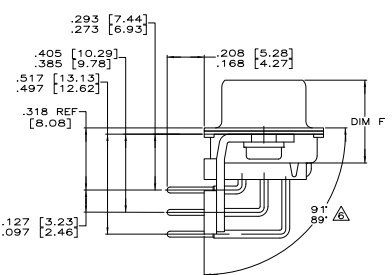


RECOMMENDED P.C. BOARD LAYOUT  
 SHELL SIZE 3 (25 POSITION)  $\Delta$

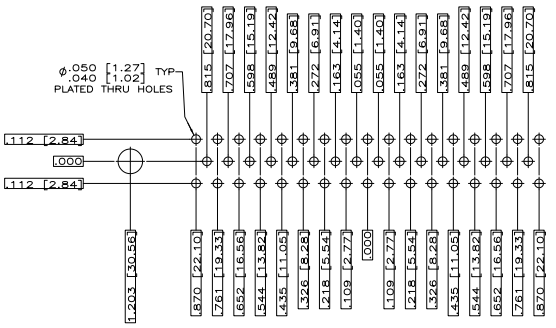


SHELL SIZE 3  
 CONTACT CONFIGURATION  
 BOARDLOCK REMOVED  
 FOR CLARITY

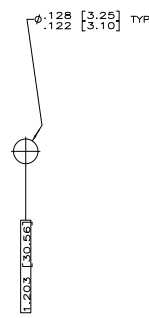
CLINCH NUT (QTY=2)  
 $\Delta$  #4-40 FEMALE THREADS (SELF-LOCKING)  
 MAT'L: CARBON STEEL  
 FINISH: ZINC PLATED, YELLOW CHROMATE



SHELL SIZE 5  
 CONTACT CONFIGURATION  
 BOARDLOCK REMOVED  
 FOR CLARITY



RECOMMENDED P.C. BOARD LAYOUT  
 SHELL SIZE 5 (50 POSITION)  $\Delta$



THIS DRAWING IS A CONTROLLED DOCUMENT.		DESIGNED BY: J. THOMAS	DATE: 5-17-98	TYS Electronics Corporation Harrisburg, PA 17105-3608
DRAWN BY: J. BAKER		CHECKED BY: J. BAKER	DATE: 5-17-98	
DESCRIPTION: PLUG ASSY AMP/UMTE	RIGHT ANGLE SERIES 109, WITH ONE PIECE INSERT	SIZE: A1	DATE: 00779	REV: 1218538
SEE CALLOUTS	SEE CALLOUTS	CUSTOMER DRAWING	SIZE: 4.1	SHEET: 2 OF 2