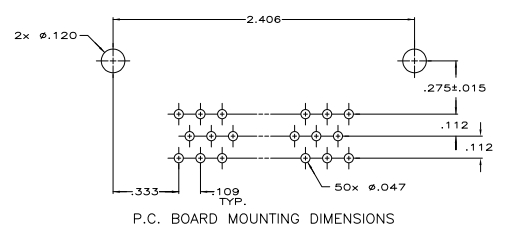
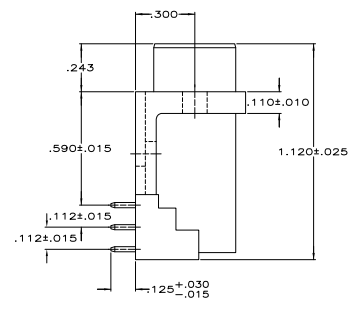
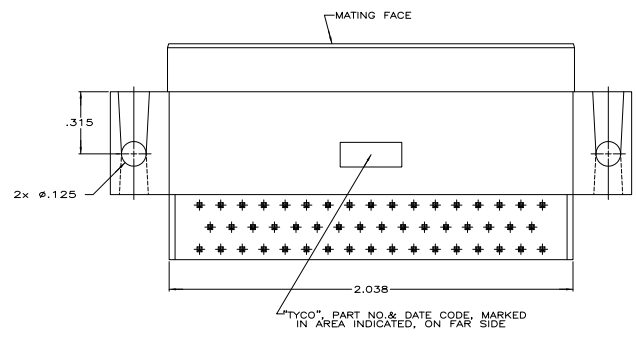
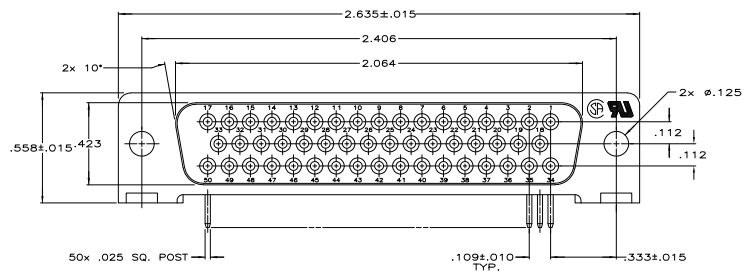


THIS DRAWING IS UNPUBLISHED
 © 2008 TSC ELECTRONICS CORPORATION ALL RIGHTS RESERVED

REV	DATE	DESCRIPTION	BY	APP
00				
A		REVISED PER ECO-06-03486	244907	JDP/EDB

- △ HOUSING: FLAME RETARDANT 94V-0 RATED THERMOPLASTIC, COLOR BLACK.
CONTACTS: BRASS
- △ GOLD PLATED FOR LENGTH OF .100 MIN FROM MATING END.
GOLD FLASH IN MATED AREA.
.000100 MIN TIN ON SOLDER END, BOTH OVER
.000050 MIN NICKEL
- △ GOLD PLATED FOR LENGTH OF .100 MIN FROM MATING END.
.000030 MIN GOLD IN MATED AREA.
.000100 MIN TIN ON SOLDER END, BOTH OVER
.000050 MIN NICKEL
OR
GOLD FLASH OVER PALLADIUM NICKEL PLATED FOR LENGTH OF
.100 MIN FROM MATING END.
.000030 MIN PALLADIUM NICKEL IN MATED AREA.
.000100 MIN TIN ON SOLDER END, BOTH OVER
.000050 MIN NICKEL



△	5206973-2
△	5206973-1
CONTACT	PART
FINISH	NUMBER

THIS DRAWING IS A CONTROLLED DOCUMENT		DESIGNED BY	J. PETERS	GROUP	5206973
DRAWN BY		CHECKED BY	M. BOLASH	GROUP	5206973
APPROVED BY		DATE	108-40025	REVISED BY	114-40015
CUSTOMER DRAWING		DATE	100779	REVISED BY	5206973
RECEPTACLE ASSEMBLY, SIZE 5, 50 POSN, RIGHT ANGLE, 590 SERIES, .025 SQ. POSTS, AIRPLANE HD-20		SIZE	4:1	SHEET	1 OF 1