

4

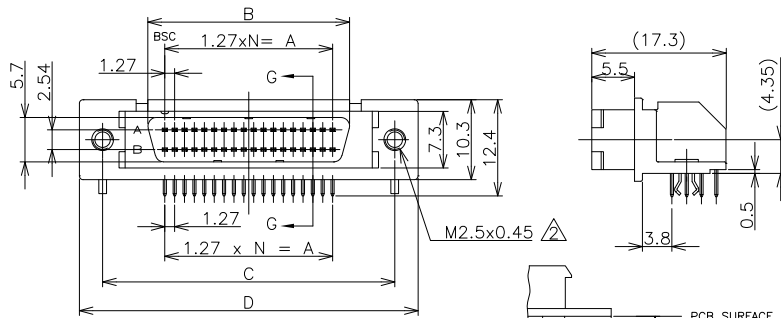
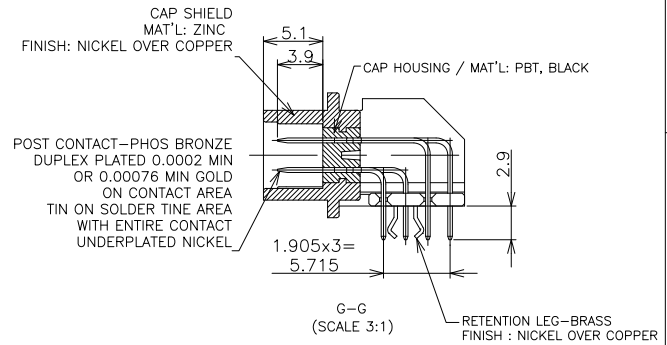
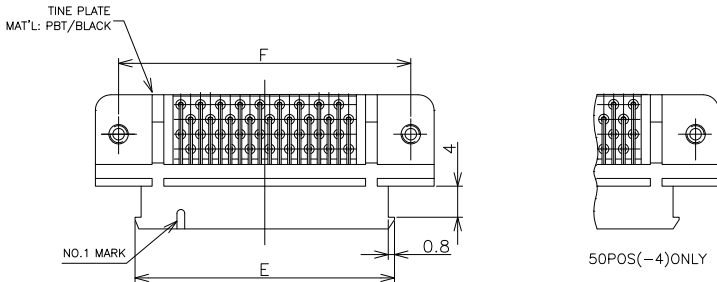
3

2

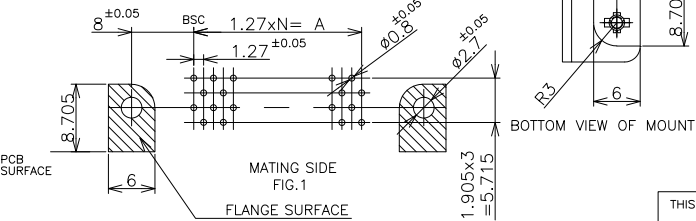
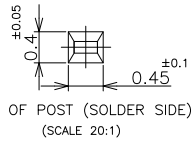
1

THIS DRAWING IS UNPUBLISHED. RELEASED FOR PUBLICATION APR. 1988.
 COPYRIGHT 1988 BY TYCO ELECTRONICS CORPORATION. ALL RIGHTS RESERVED.

LOC	DIST	REVISIONS				
P	LTR	DESCRIPTION	DATE	DWN	APVD	
A		REVISED ECR-05-006022	1JUL05	L.Z	S.Y	
A1		REVISED PER ECO-09-024927	09NOV09	KK	AEG	



G-G (SCALE 3:1)
 RETENTION LEG-BRASS FINISH: NICKEL OVER COPPER



GENERAL TOLERANCE
 10 ≥ : ±0.2
 30 ≥ > 10: ±0.25
 100 ≥ > 30: ±0.3
 ANGLES: ±3°

96	47	59.69	64.06	75.7	81.7	71.49	75.7	0.00076 MIN	△2	6
68	33	41.91	46.28	57.9	63.9	53.71	57.9		2-	5
50	24	30.48	34.85	46.5	52.5	42.28	46.5		△2	4
28	13	16.51	20.88	32.5	38.5	28.31	32.5		△2	2
20	9	11.43	15.8	27.4	33.4	23.23	27.4	△2	1	
96	47	59.69	64.06	75.7	81.7	71.49	75.7	0.0002 MIN	△2	6
68	33	41.91	46.28	57.9	63.9	53.71	57.9		△2	5
50	24	30.48	34.85	46.5	52.5	42.28	46.5		△2	4
36	17	21.59	25.96	37.6	43.6	33.39	37.6		△2	3
28	13	16.51	20.88	32.5	38.5	28.31	32.5	△2	2	
20	9	11.43	15.8	27.4	33.4	23.23	27.4	△2	1	

- 1 P.C BOARD HOLE LAY-OUT AS SHOWN FIG.1
- △ USED SCREW SIZE; M2.5 PANHEAD SCREW
- 3 CONNECTOR TO BE MATED;
X-5174340-X
- △ OBSOLETE PARTS: OBSOLETE CIS STREAMLINING PER D.RENAUD/D.SINISI

THIS DRAWING IS A CONTROLLED DOCUMENT.

DWN Roy Hgo 17Aug04	CHK Steven Yao 17Aug04	APVD J.Enomoto 17Aug04	NAME Tyco Electronics Tyco Electronics AMP K.K. Kawasaki, Japan
DIMENSIONS: mm	TOLERANCES UNLESS OTHERWISE SPECIFIED: 0 PLC ± 1 PLC ± 2 PLC ± 3 PLC ± 4 PLC ± ANGLES ±	PRODUCT SPEC 108-60037-1	POST HEADER (HORIZONTAL, WITH R/L) AMPLIMITE .050 SERIES II CONN. TYPE B
MATERIAL SEE ABOVE	FINISH SEE ABOVE	SIZE A3	CAGE CODE 00779
CUSTOMER DRAWING		DRAWING NO C-5174341	RESTRICTED TO A1
		SCALE 2:1	SHEET 1 OF 1 REV A1

AMP 1470-19 REV 31MAR2000