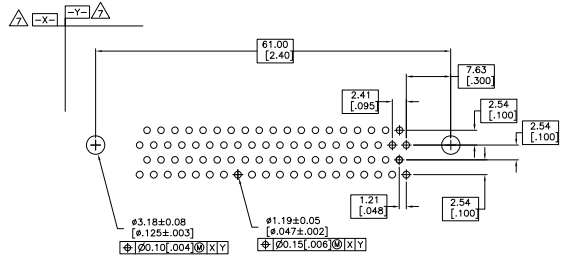
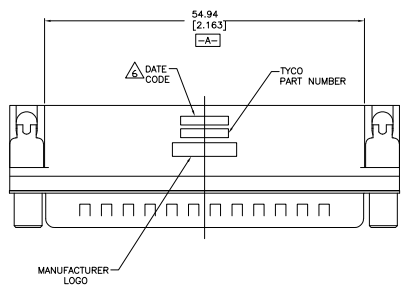


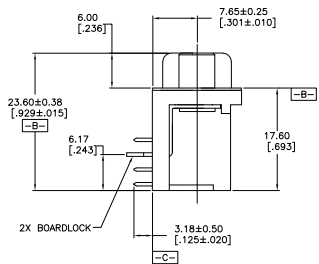
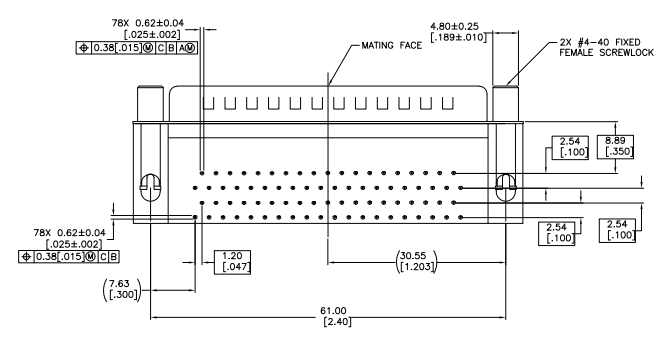
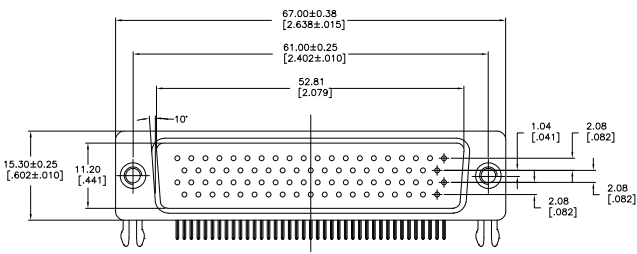
THIS DRAWING IS UNPUBLISHED  
 UNLESS INDICATED OTHERWISE  
 © 2006 BY TYS Electronics Corporation. ALL RIGHTS RESERVED.

REV	DATE	DESCRIPTION	BY	CHK	APP
GP 00					
B		REVISED PER ECO-06-03463			JDP/SLB



- HOUSING: PBT, GLASS FILLED, BLACK, UL 94V-0 RATED.
  - CONTACT: BRASS, GOLD PLATE IN MATING AREA (SEE TABLE), 120µ" MIN TIN PLATE ON SOLDER TAIL, BOTH OVER 50µ" MIN NICKEL UNDERPLATE.
  - SHELL: STEEL, NICKEL PLATE.
  - BOARDLOCK: BRASS, TIN PLATE 100µ" MIN.
  - FEMALE SCREWLOCKS: BRASS, NICKEL PLATE.
- △ FOUR DIGIT DATE CODE IN THIS FORMAT.
- 01 45  
 YEAR MANUFACTURING WEEK
- △ DATUMS -X- & -Y- TO BE ESTABLISHED BY CUSTOMER.

RECOMMENDED PCB LAYOUT



TRAY	15µ" MIN	5749234-3
OBSOLETE	TRAY	30µ" MIN 5749234-1
PACKAGING	CONTACT MATING AREA FINISH	PART NUMBER

THIS DRAWING IS A CONTROLLED DOCUMENT.		REV	DATE	BY	CHK	APP	DESCRIPTION
DESIGNED	BY	1					AMPLIMITE HD-22
DRAWN	BY	1					78 POSN PLUG, RIGHT ANGLE
CHECKED	BY						
APPROVED	BY						
CUSTOMER DRAWING		A1	00779				5749234