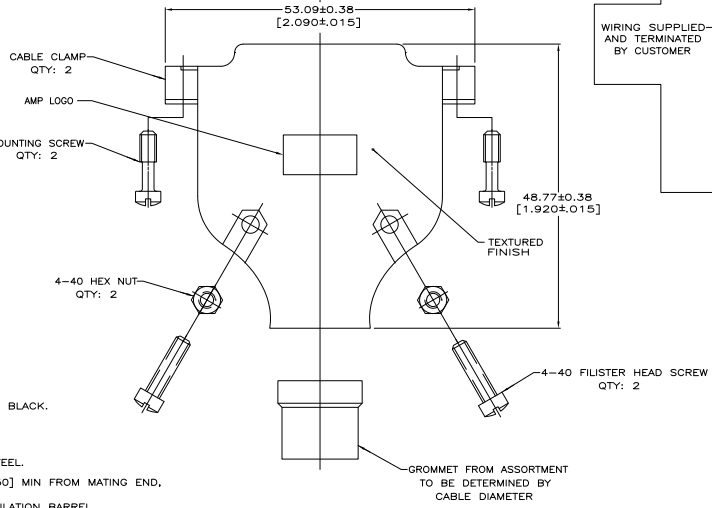
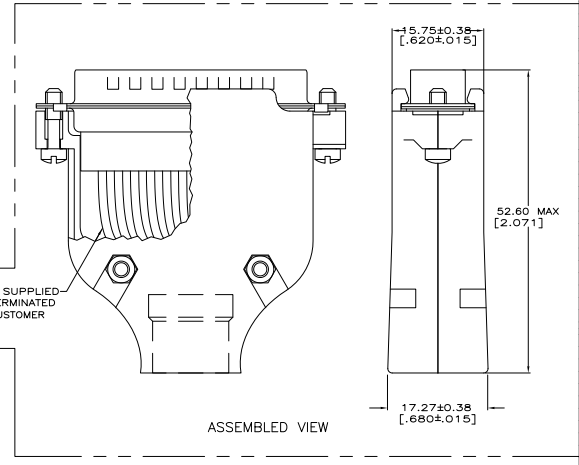
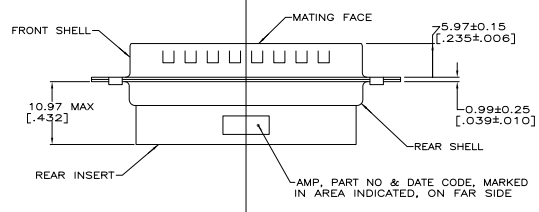
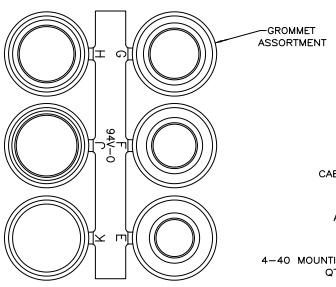
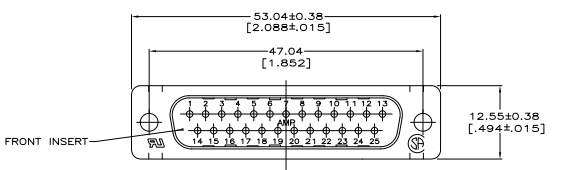
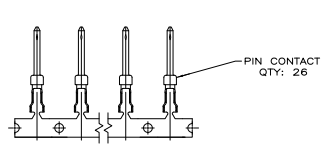


THIS DRAWING IS UNPUBLISHED
 ALL RIGHTS RESERVED

REV	DATE	DESCRIPTION	BY	APP'D
00				
B		REVISED FOR ECO-08-04475	JDF	CWR



- 1. CONTACTS ACCEPT 24-20 AWG RANGE.
- ▲ INSERTS: NYLON, GLASS FILLED, UL 94V-0 RATED, BLACK.
- ▲ GROMMETS: PVC, UL 94V-0 RATED, BLACK.
- ▲ CONTACTS: BRASS.
- ▲ SHELLS: CARBON STEEL.
- ▲ CABLE CLAMPS: ZINC; SCREWS & NUTS: CARBON STEEL.
- ▲ CONTACTS: GOLD FLASH FOR A LENGTH OF 3.81[150] MIN FROM MATING END, 2.54mm[0.00100] MIN TIN ON OPPOSITE END FOR A LENGTH OF 4.06 [1.160] MIN FROM END OF INSULATION BARREL, BOTH OVER 0.76mm[0.00030] MIN NICKEL ON ENTIRE CONTACT.
- ▲ SHELL: 5.08mm[0.000200] MIN TIN OVER 2.54mm[0.000100] MIN COPPER.
- ▲ MOUNTING SCREWS & NUTS: 3.81mm[0.000150] MIN ZINC, CLEAR CHROMATE COATED.
- ▲ FILISTER HEAD SCREWS: ZINC, CLEAR CHROMATE COATED.
- ▲ CABLE CLAMPS: NICKEL OVER COPPER.

749805-9
 PART NO

THIS DRAWING IS A CONTROLLED DOCUMENT.		DATE	BY	APP'D
DESIGNED	ENGINEER	DATE	BY	APP'D
108-40005	114-40030	100779		
CUSTOMER DRAWING		SIZE	SHEET	OF
		2:1	1	1